

CITY OF NEWPORT BEACH WATERFRONT PROJECT GUIDELINES AND STANDARDS

HARBOR DESIGN CRITERIA COMMERCIAL & RESIDENTIAL FACILITIES



City Council Approved
March 23, 2021

Harbor Design Criteria (Version March 2021)

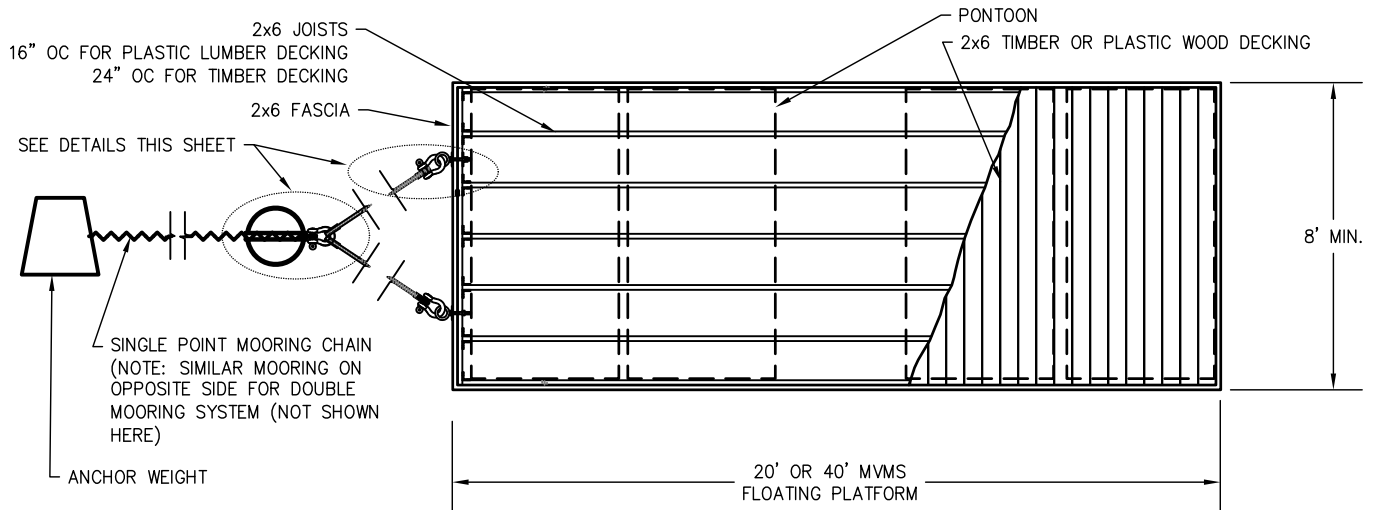
6. SPECIAL HARBOR FACILITIES

e. Special Mooring Devices

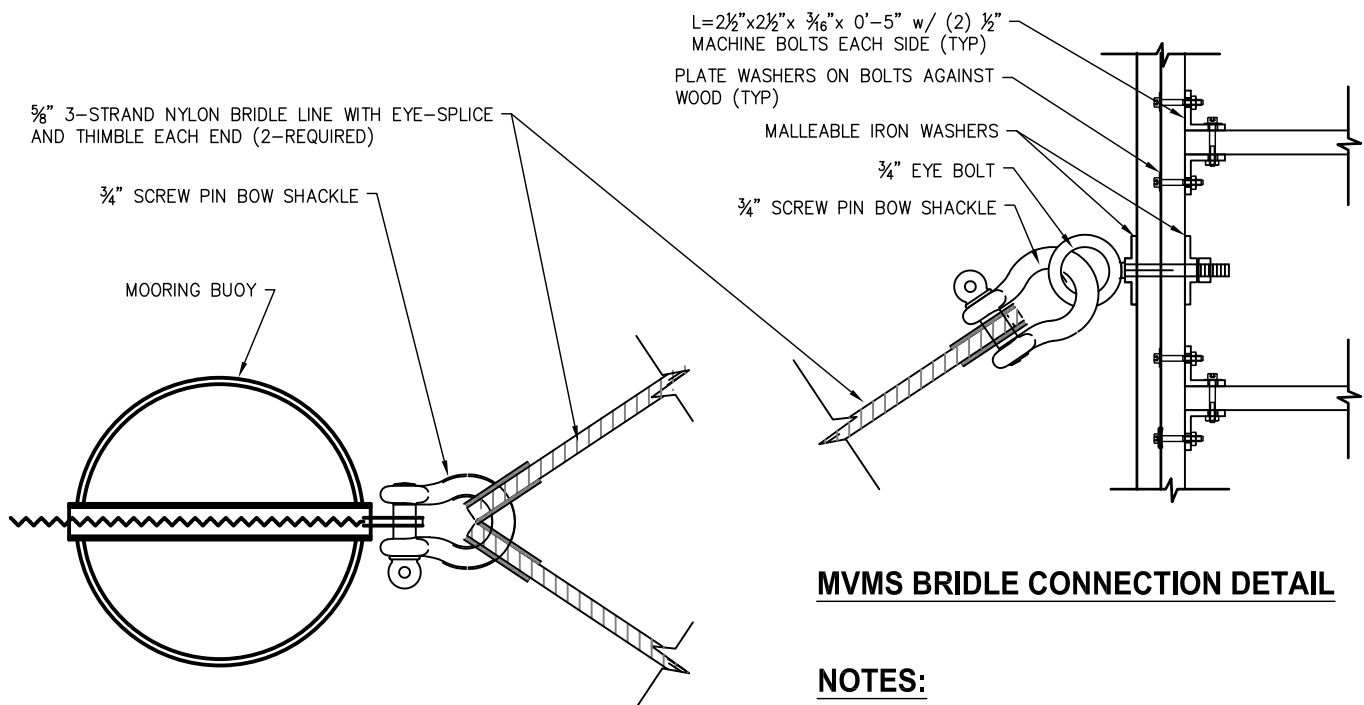
- (1) Special vessel mooring devices...
- (2) Special mooring devices...
- (3) Multiple Vessel Mooring System (MVMS) allows multiple vessels to be secured to a floating platform which is secured to a single anchor mooring system in Newport Harbor. This allows multiple vessels to side-tie to the floating platform therefore increasing vessel capacity at a mooring location. The original intent of the MVMS was to provide increased small-boat storage at a mooring location within the single anchor mooring fields.
 - a) MVMS requests must be approved by the Harbor Department and Public Works Department prior to installation. Because of the potential conflict with adjacent moorings due to the increased mooring footprint, only single-hulled vessels will be permitted to use the MVMS.
 - b) MVMS floats shall follow material and construction requirements as noted in the Harbor Design Criteria. The minimum MVMS float width shall be 8-feet. The MVMS float length shall be either 20-feet or 40-feet. The mooring tackle weight and chain specification for MVMS is maintained by the Harbor Department. The minimum specification for mooring tackle is calculated based on the maximum capacity (vessel size and number of vessels) for either the 20-foot or 40-foot MVMS, respectively.
 - c) The maximum vessel length overall shall be equal to or less than the length of the MVMS. No vessel overhang beyond the ends of the float is allowed. (Example: A 40-foot MVMS may accommodate (1) 40-vessel or (2) 20-foot vessels.) Vessels secured to the MVMS shall be side-tied in such a manner as to assure the security of such vessels fore (bow) and aft (stern) at a minimum.
 - d) The maximum overall width of the MVMS system (i.e., boat + MVMS + boat) shall be 25-feet.
 - e) Coolers, benches, furniture, boat covers, trash, debris, etc. shall not be used or stored on the MVMS at any time. Up to two (2) locker “dock” boxes may be permitted on the MVMS by the Harbor Department and shall follow material and installation requirements as noted in the Harbor Design Criteria. No flammable, combustible or otherwise hazardous material shall be stored in the dock boxes or on the MVMS. A dock box shall be secured using reasonable

commercial standards approved by the Harbor Department and shall only hold enough items so that the dock box cover remains fully closed at all times.

- f) The MVMS shall adhere to all provisions for harbor structures as stated in NBMC Chapter 17 including, but not limited to, maintaining appropriate measures to deter sea lions from boarding the MVMS.



MVMS MOORING CONNECTION DETAIL



MVMS MOORING CONNECTION DETAIL

MVMS BRIDLE CONNECTION DETAIL

NOTES:

1. TIMBER SHALL BE SELECT STRUCTURAL DOUGLAS FIR TREATED WITH PRESERVATIVE APPROVED BY THE STATE OF CALIFORNIA (CALIFORNIA COASTAL COMMISSION AND REGIONAL WATER QUALITY CONTROL BOARD).
2. FIELD CUTS AND BORED HOLES SHALL RECEIVE A BRUSH COAT OF PRESERVATIVE TREATMENT PER STATE AND FEDERAL GUIDELINES.
3. FASTENERS SHALL BE STAINLESS OR HOT-DIP GALVANIZED.
4. WALKING SURFACES SHALL HAVE A SKID RESISTANT FINISH, SUCH AS UNPAINTED TIMBER OR GRIT ON TIMBER, OR OTHER SURFACING DEEMED APPROPRIATE FOR THE INTENDED SERVICE, BY THE CITY.
5. NON-STRUCTURAL MEMBERS MAY BE ALTERNATIVE MATERIALS SUCH AS COMPOSITE DIMENSIONAL LUMBER. SUBMIT PRODUCT SPECIFICATIONS TO THE CITY FOR APPROVAL.
6. SEE HARBOR DESIGN CRITERIA FOR ADDITIONAL DESIGN REQUIREMENTS.

APP. _____
CITY ENGINEER RCE DATE

NO.	DATE	DESCRIPTION OF REVISIONS

CITY OF NEWPORT BEACH DEPARTMENT OF PUBLIC WORKS

DRAWN: T. FISCHETTI

DATE: 08/24/2021

MULTIPLE VESSEL MOORING SYSTEM

STANDARD DRAWING NO.

617

SHEET 1 OF 1