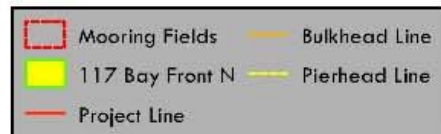


Residential Dock Reconfiguration at 117 North Bay Front

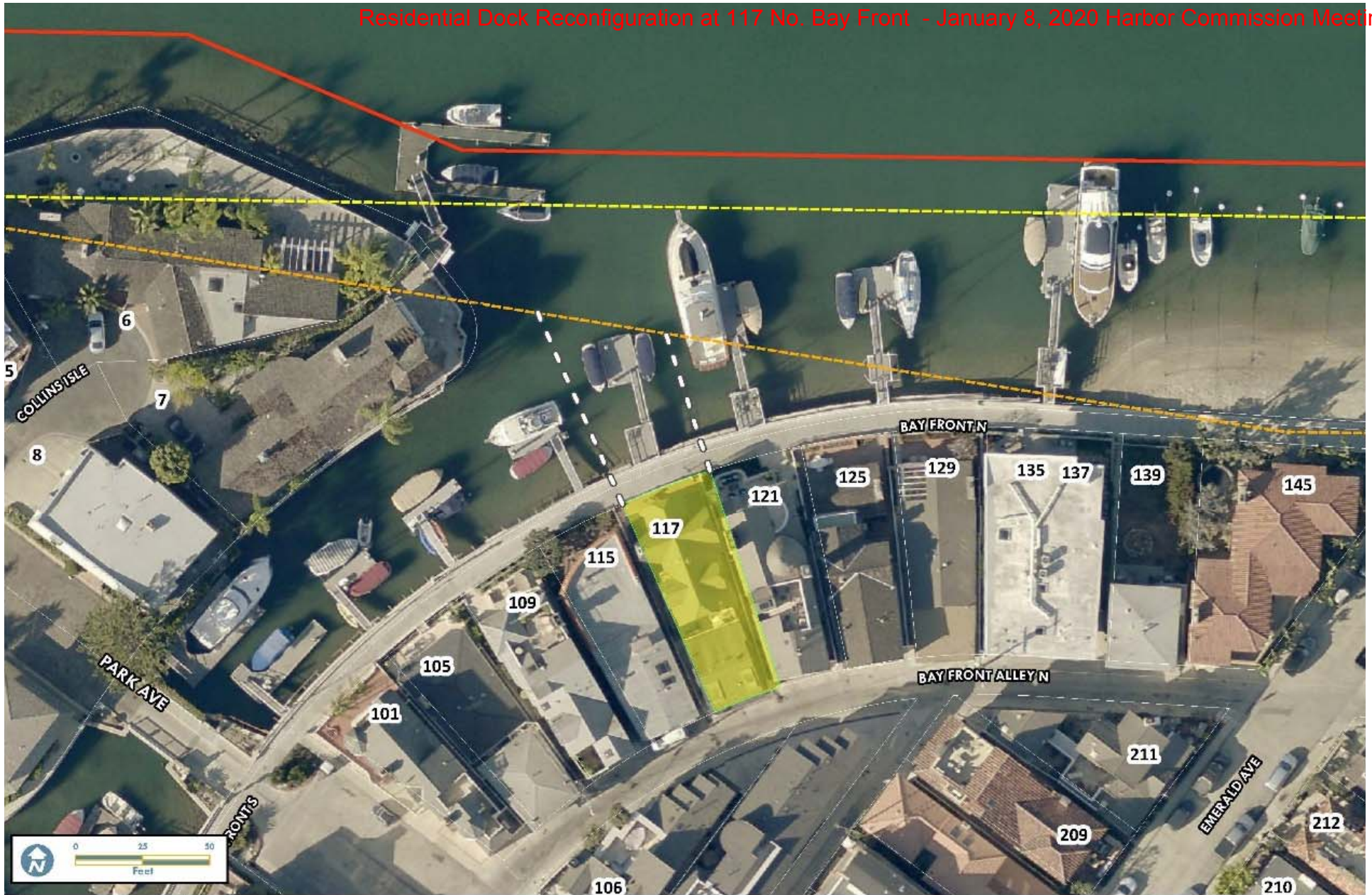
Harbor Commission
January 8, 2020



117 Bay Front N




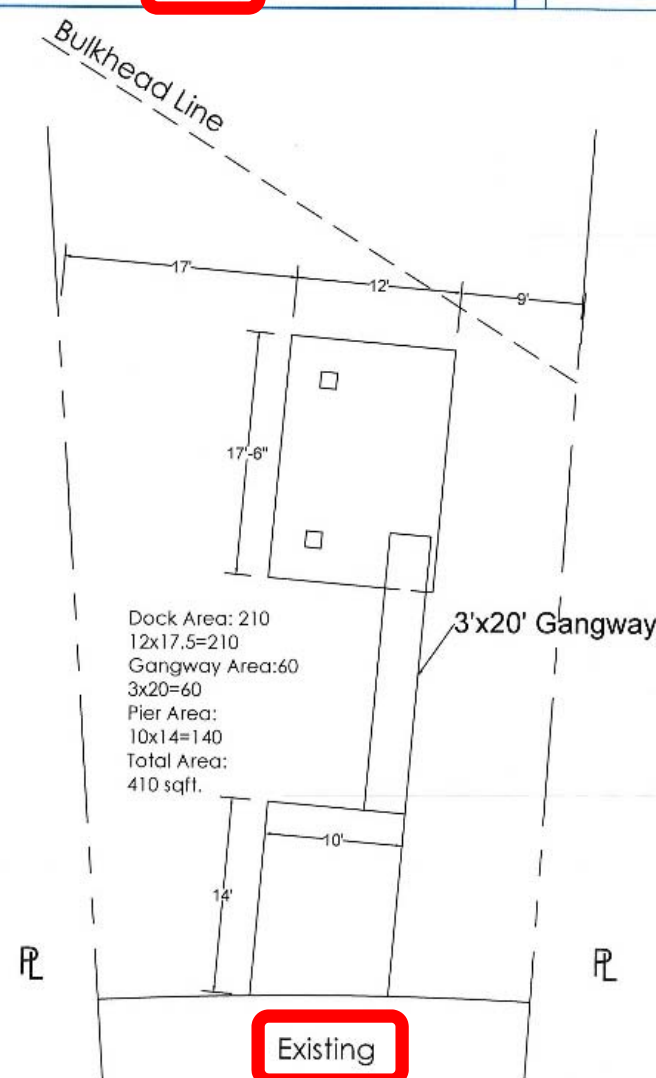
City of Newport Beach
GIS Division
December 16, 2019



117 Bay Front N



 SWIFT SLIP DOCK & PIER BUILDERS, INC.		6351 Industry Way, Westminster 92683 Phone: (949) 631-3121 Fax: (714) 509-0618							
CLIENT:	Caparelli, Ed	IO	1.0	06/21/19	AMENDMENTS:				
		DRAWN:	Checked	REVISION	DATE:	REV.	DESCRIPTION	BY:	DATE:
SITE:	117 N. Bayfront NB, Ca	Existing				-	----	-	-
						-	----	-	-
						-	----	-	-



Bulkhead Line

17' 12' 9'

17'-6"

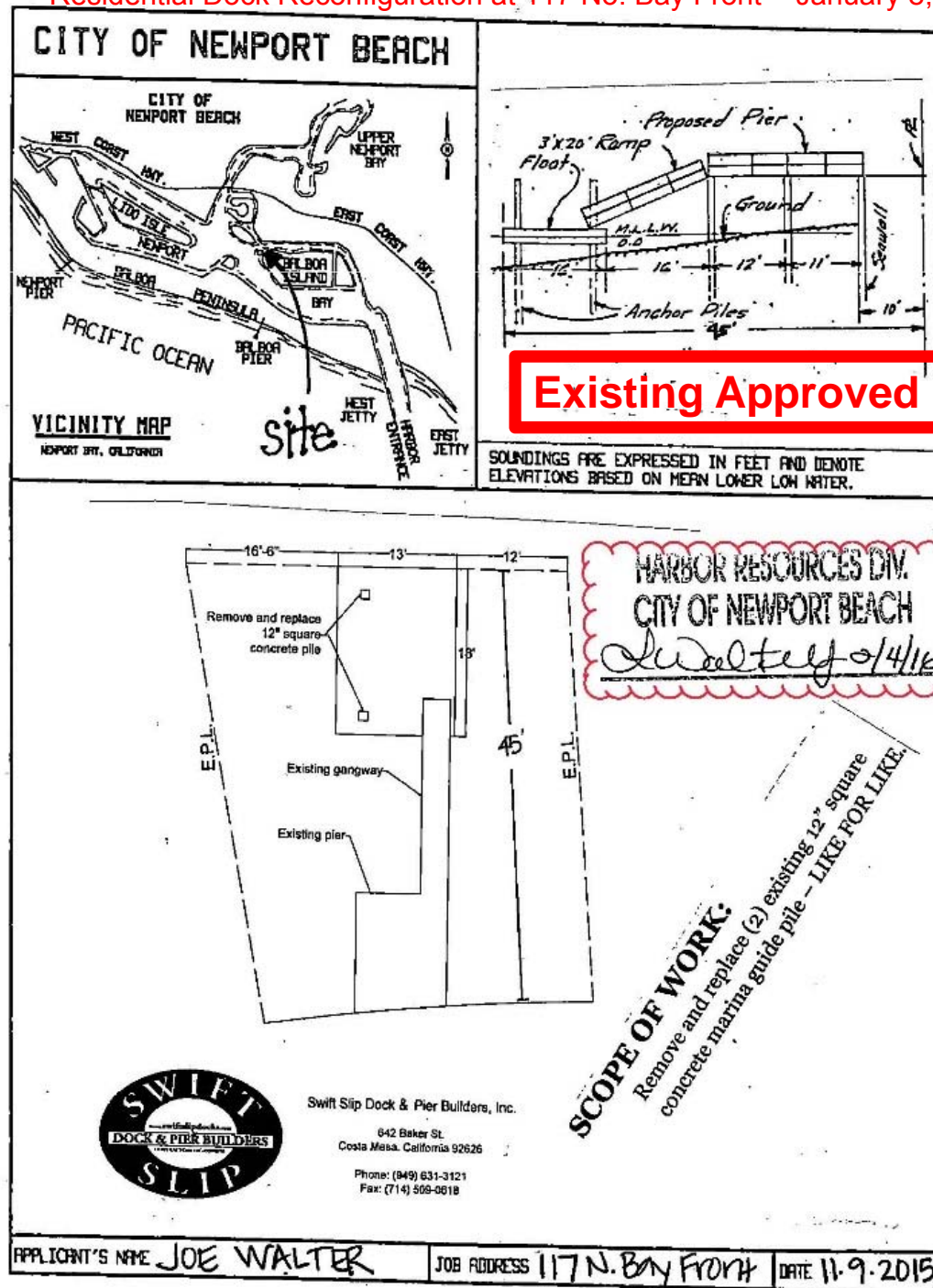
3'x20' Gangway

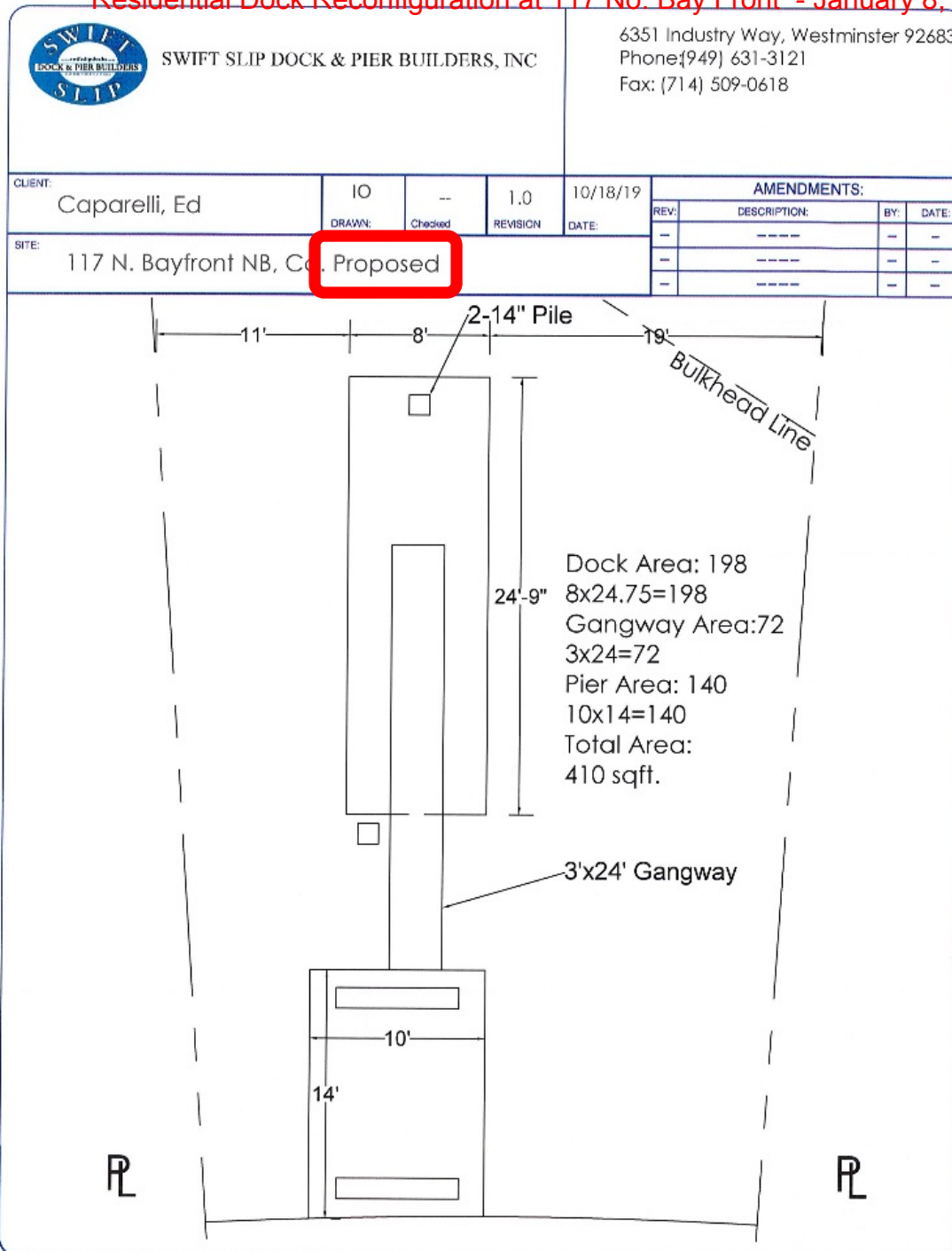
10'

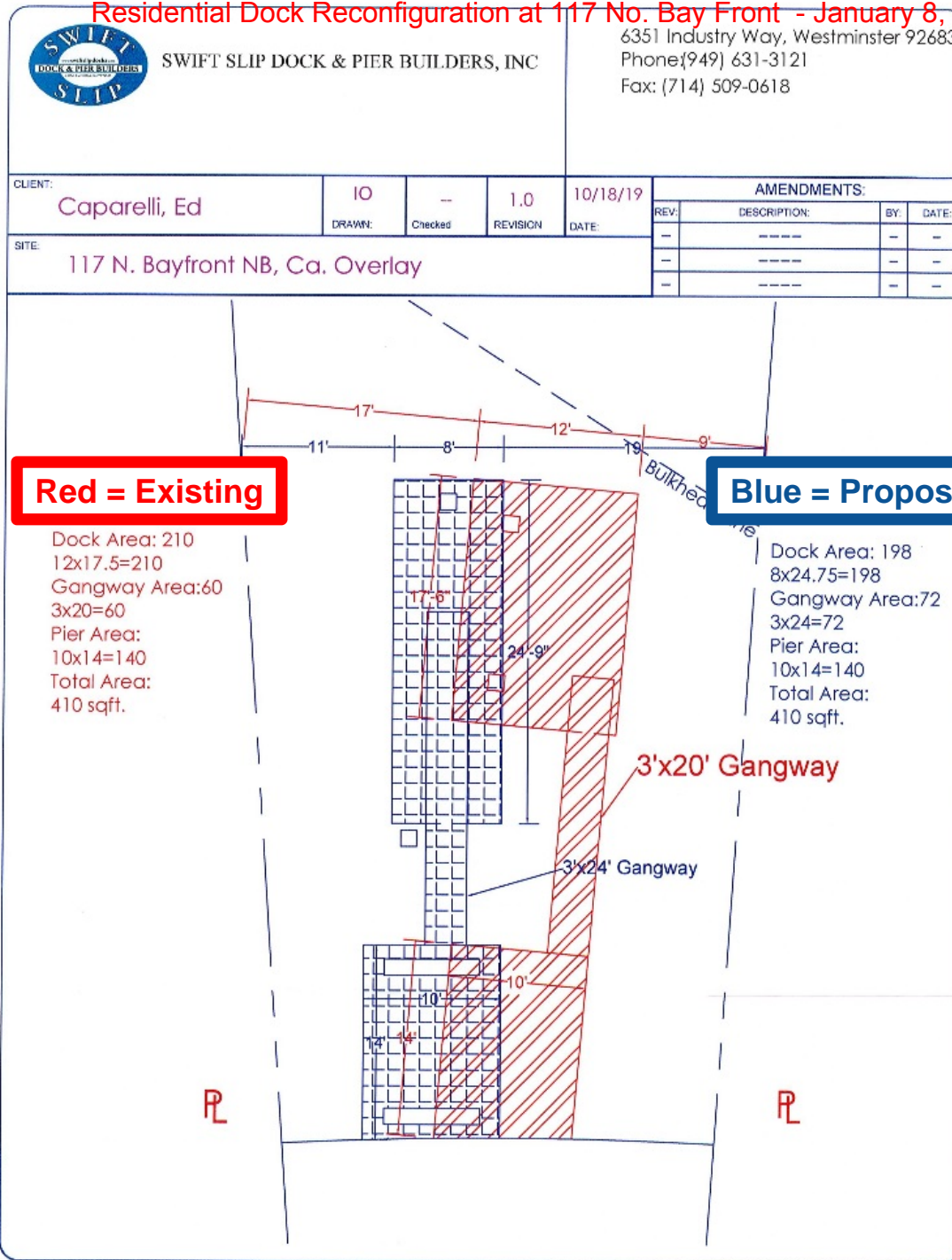
14'

Dock Area: 210
 12x17.5=210
 Gangway Area: 60
 3x20=60
 Pier Area:
 10x14=140
 Total Area:
 410 sqft.

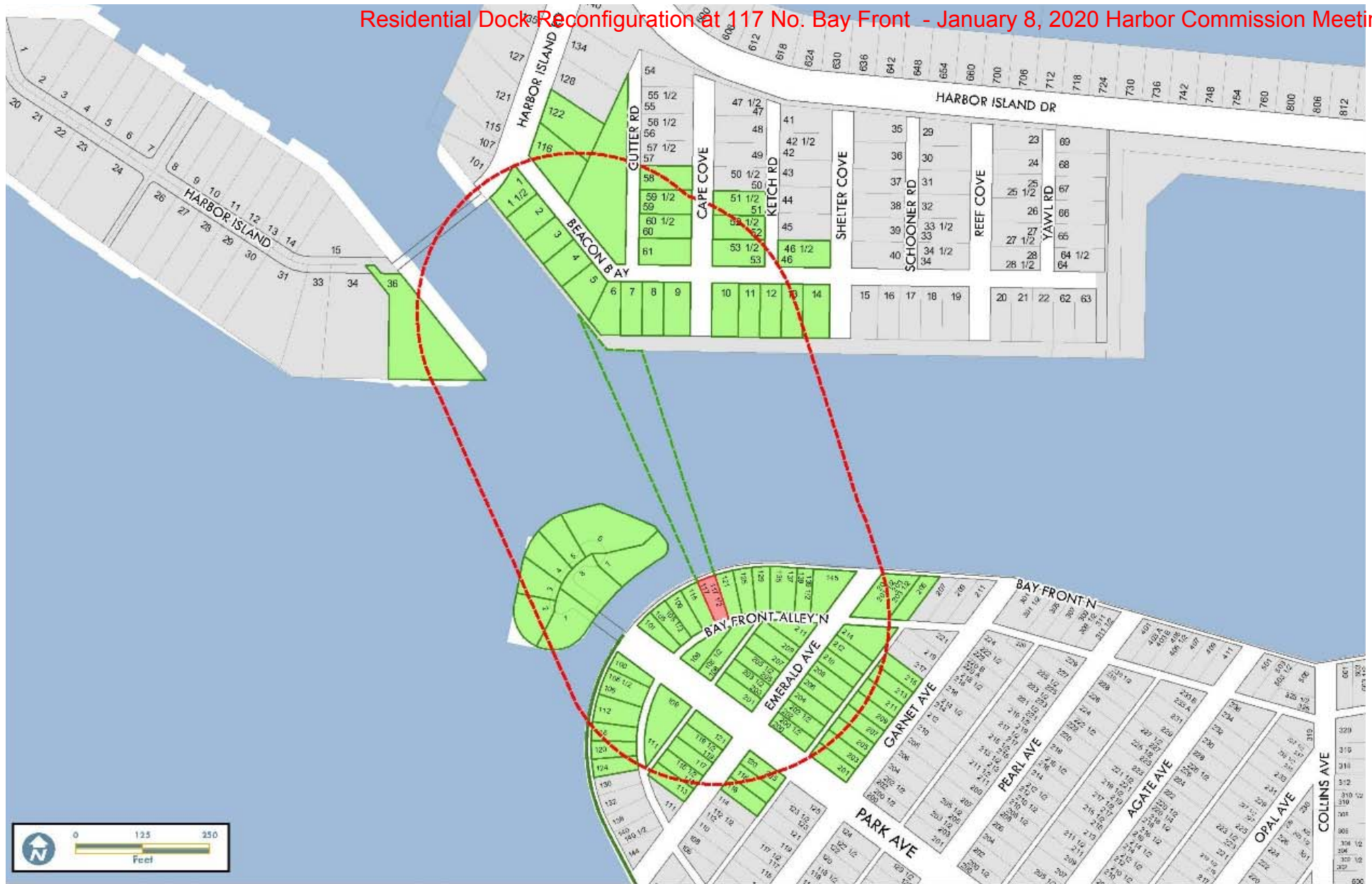
Existing







Additional Material Presented at Meeting
Residential Dock Reconfiguration at 117 No. Bay Front - January 8, 2020 Harbor Commission Meeting



117 Bay Front N

- Prolongation of Lot Lines
- Buffer 300'
- 117 Bay Front N
- Notified Properties



City of Newport Beach
GIS Division
December 12, 2019

Comments/Questions



Your **Public Works Department**

Protecting and Providing Quality
Public Improvements and Services