

ATTACHMENT C

**WATER SUPPLY AND SYSTEM UPDATE – POWERPOINT PRESENTATION TO
CITY COUNCIL ON FEBRUARY 26, 2019**

Newport Beach Water Supply & System Update



City Council Study Session
February 26, 2019

Utilities Department

Water System

Extensive & Complex System Covering Most of the City's Boundaries
Water Deliveries Double in the Summertime

System Overview

- 302 Miles of Potable Water Pipeline
- 202 Million Gallon Storage Capacity
- 26,550 Service Connections
- 17 Booster Pumps
- 42 Pressure Reducing Stations
- 2,723 Fire Hydrants
- 8,172 Distribution Valves
- 12 Interconnects with Local Agencies



2018 Water Delivery Facts

- 4.8 Billion Gallons Delivered (~15,000 acre feet)
 - 74% from 4 Local Groundwater Wells
 - 23% from 6 Import Connections
 - 3% from local Recycled Supplier



Utilities Department

Groundwater Supply

Four Water Wells



Utilities Department





OCWD Presentation



Water System Update



Current System

- Current water supply situation is good;
- Cost to purchase/pump water continues to rise
- Current CIP program is approx. \$5mil annually
- Programed/scheduled/Proactive maintenance & replacements system management strategies
- Non-master plan needs
- Customer Service

Future Needs and Investments

- Maintenance investments
- Capital Improvement Investments
- Advanced Meter Infrastructure
- Water Conservation



Utilities Department



16th Street Water Pump Station



Utilities Department

Coming up:

Water Master Plan Update

- Draft Water Master Plan to be published next week
- Previous Water Master Plan was 2008/2009
- Recommended increase in capital replacements

Water Rate Study

- Next City Council meeting, request to hire a consultant and study the rates
- Create an updated financial plan
- Previous Water Rate Study was in 2009
- Last rate adjustment was in 2014



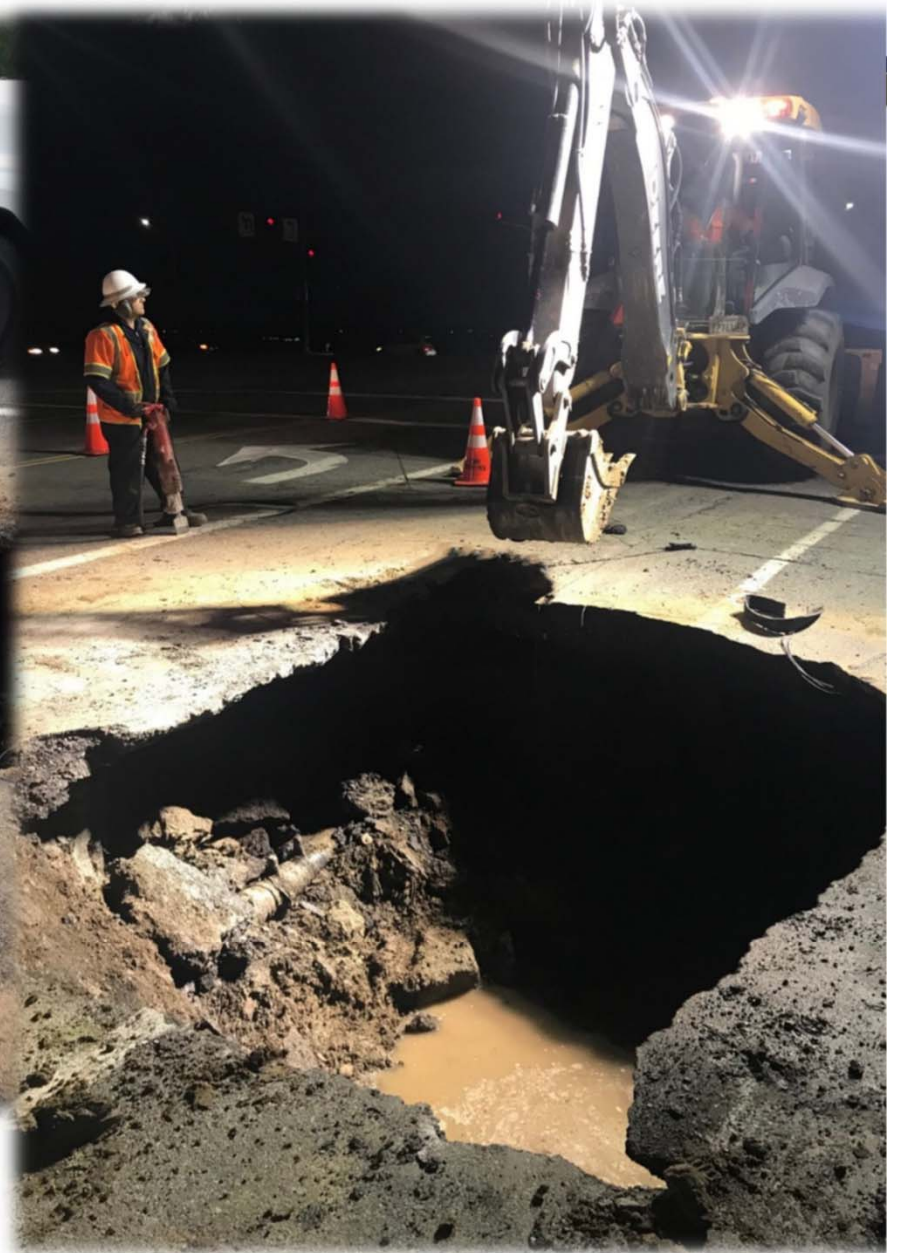
Jamboree Waterline Break



Utilities Department



Jamboree Waterline Break



Utilities Department

Jamboree Waterline Break



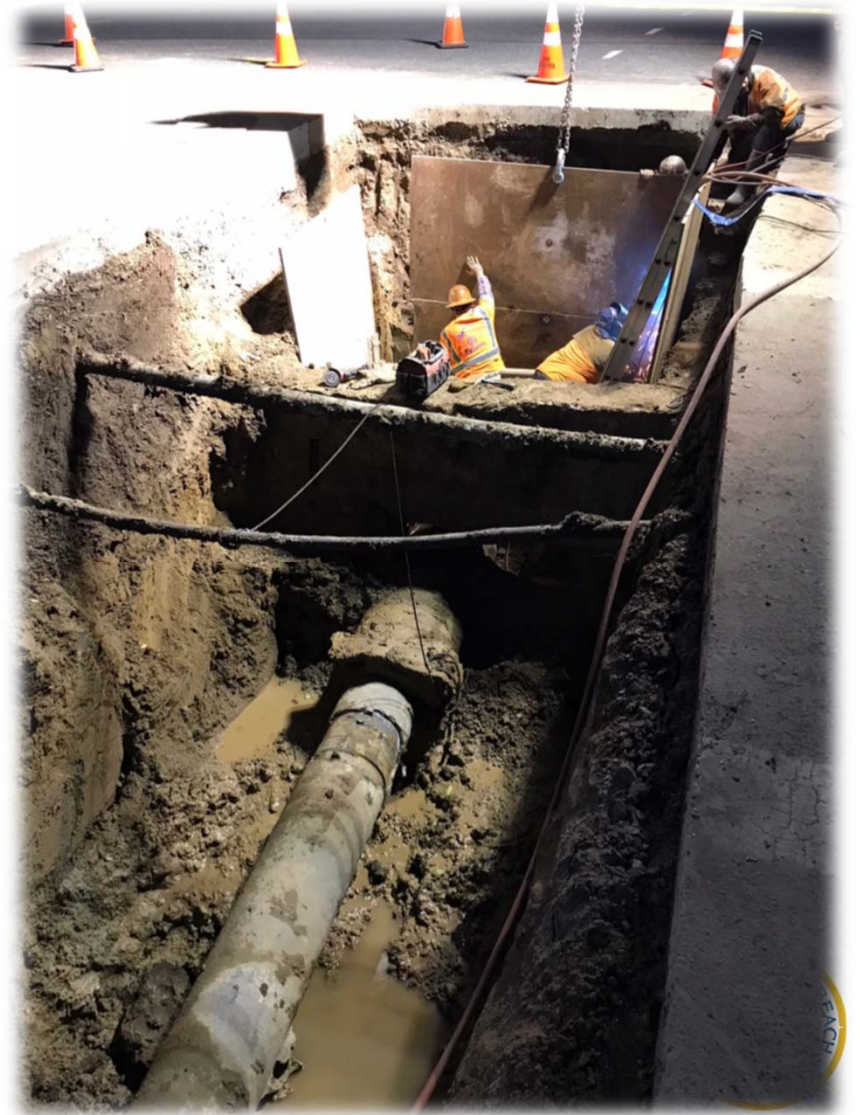
Jamboree Waterline Break



Utilities Department



Jamboree Waterline Break

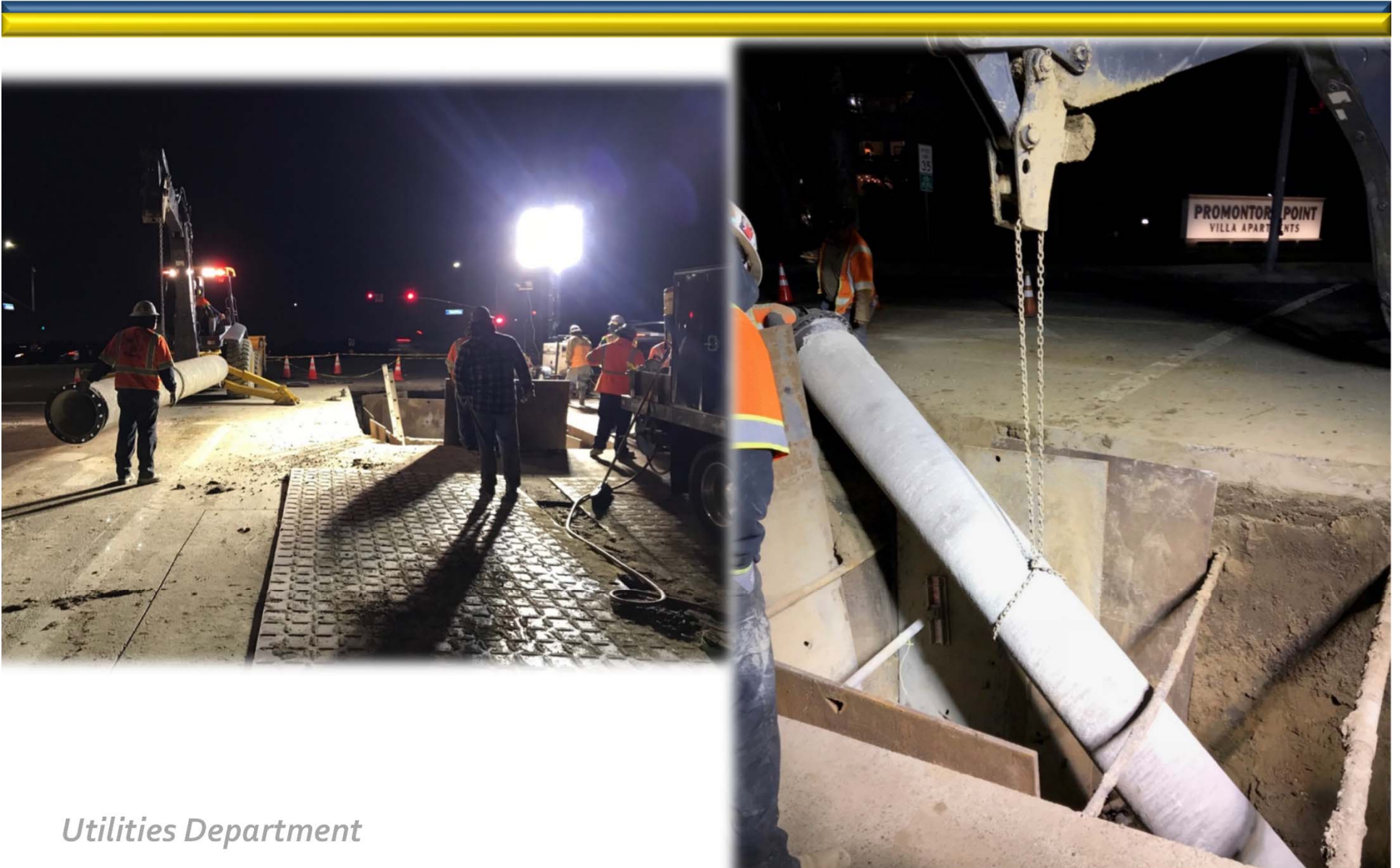


Utilities Department

Jamboree Waterline Break

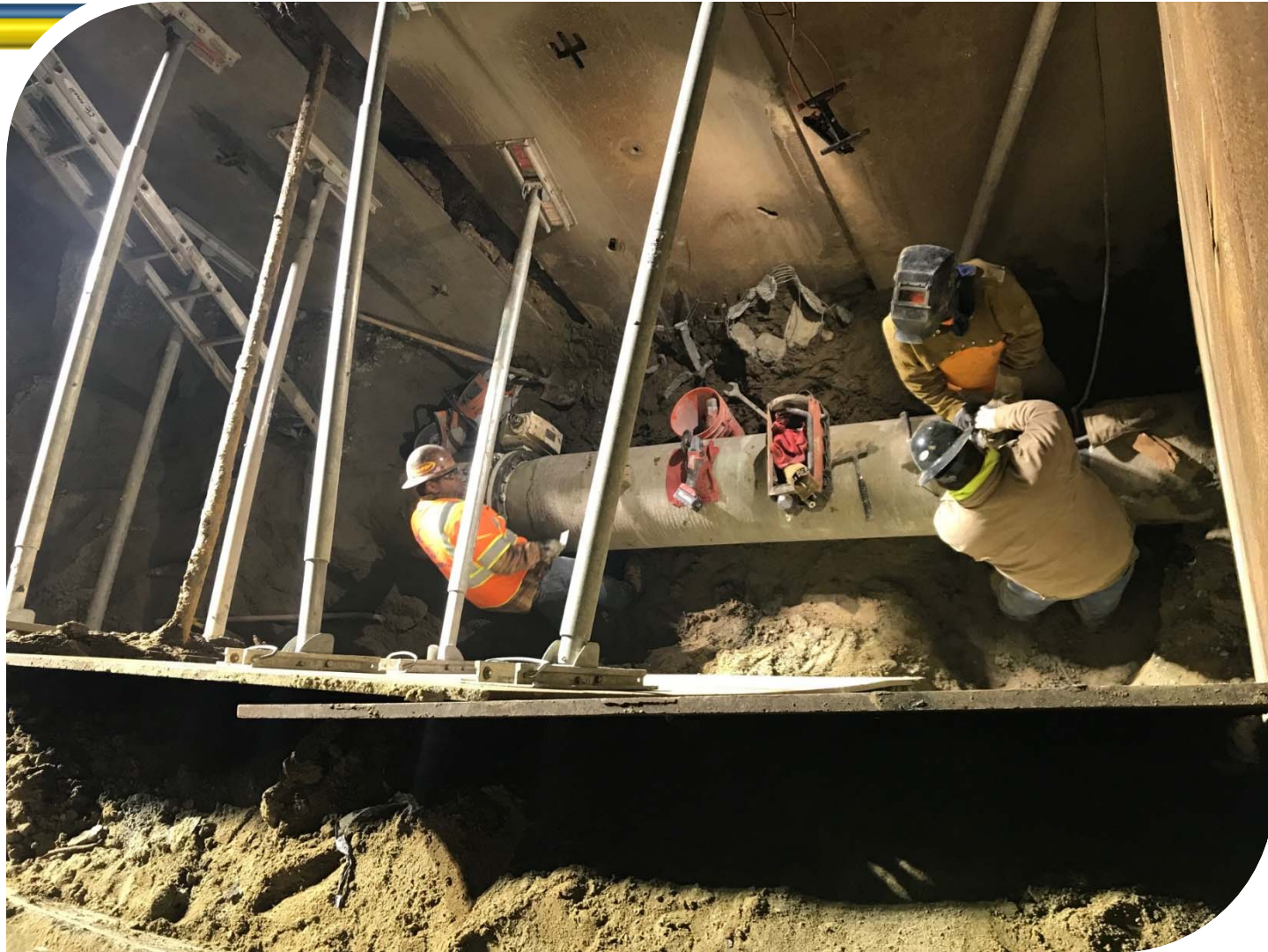


Jamboree Waterline Break Emergency



Utilities Department

Jamboree Waterline Break



Utilities Department



Water Supply & System Update

- End of Presentation

