

# Verizon Wireless Eastbluff Proposal

Newport Planning Commission  
September 12, 2018

## Eastbluff Team

- **Jim Heinrich**, Plancom, Inc.
- **Leslie Daigle**, Representative for Verizon Wireless
- **Paul Albritton**, Mackenzie & Albritton, LLP

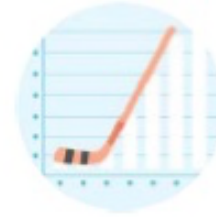
# Accelerating Demand for Service

## Why are we expanding the wireless network?

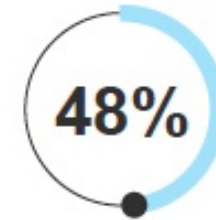
More people than ever before rely on wireless connections to manage their lives and businesses.

Verizon is expanding its wireless network to meet the growing demands of today and tomorrow.

But it takes time.



U.S. mobile data usage is projected to grow nearly seven-fold through 2019.<sup>1</sup>



More than 48 percent of American households are wireless-only.<sup>2</sup>



In North America, the average household has 13 connected devices with smartphones outnumbering tablets 6 to 1.<sup>3</sup>

## "Cell Splitting" Increases Capacity

### Staying ahead of demand.

A wireless network is like  
a highway system...





More wireless traffic needs more wireless facilities just like more vehicle traffic needs more lanes.

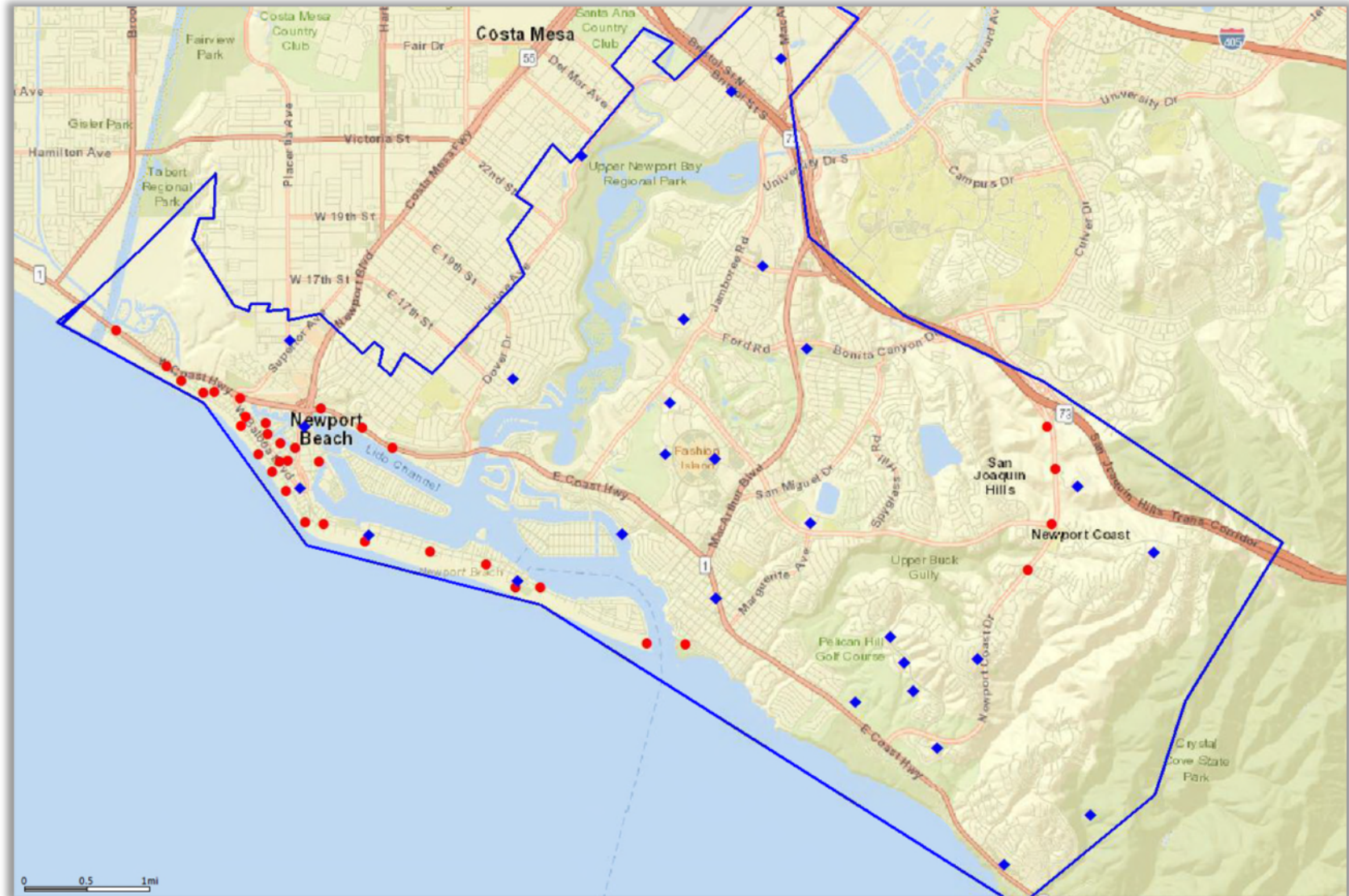
- Many wireless users share each cell site and congestion may result when too many try to use it at the same time.
- Wireless coverage may already exist in an area, but with data usage growth increasing exponentially each year, more capacity is needed.
- To meet capacity demands, we need to add more wireless antennas closer to users and closer to other cell sites to provide the reliable service customers have come to expect from Verizon.

Wireless subscribers used almost 10 trillion megabytes of data in 2015, more than double what they consumed in 2014.\*




# Verizon Newport Beach Network

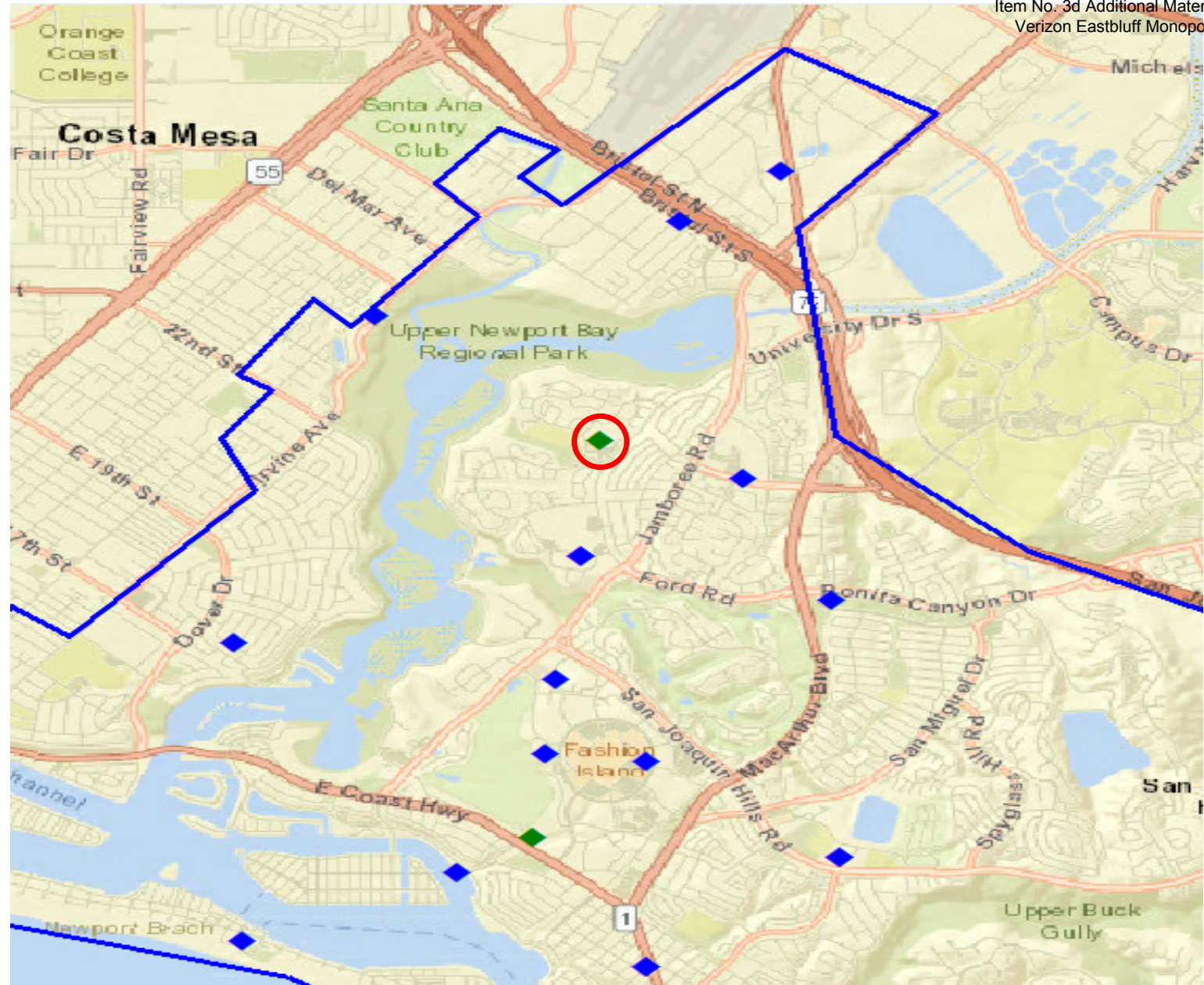
Existing Macros   
New Small Cells  
(PCZ) 





# Verizon Newport Beach Network

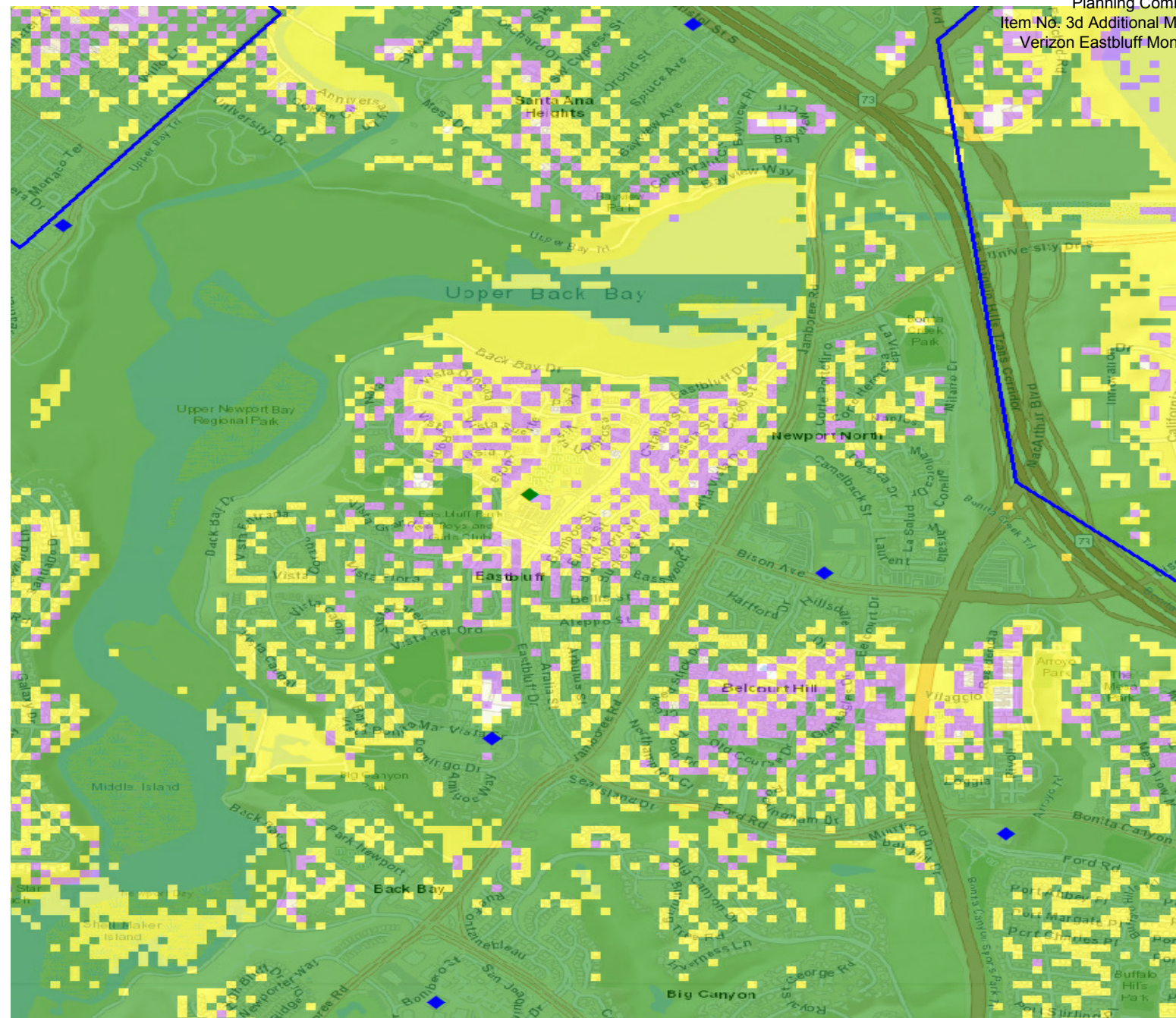
Existing Macros   
New Macros  
(PCZ) 



Confidential and proprietary materials for authorized Verizon personnel and outside agencies only. Use, disclosure or distribution of this material is not permitted to any unauthorized persons or third parties except by written agreement.



## Existing Coverage





## Area Map





# Zoning Map

# R<sub>1</sub> Prohibited

Away from  
Residential districts,  
public parks or  
public facilities

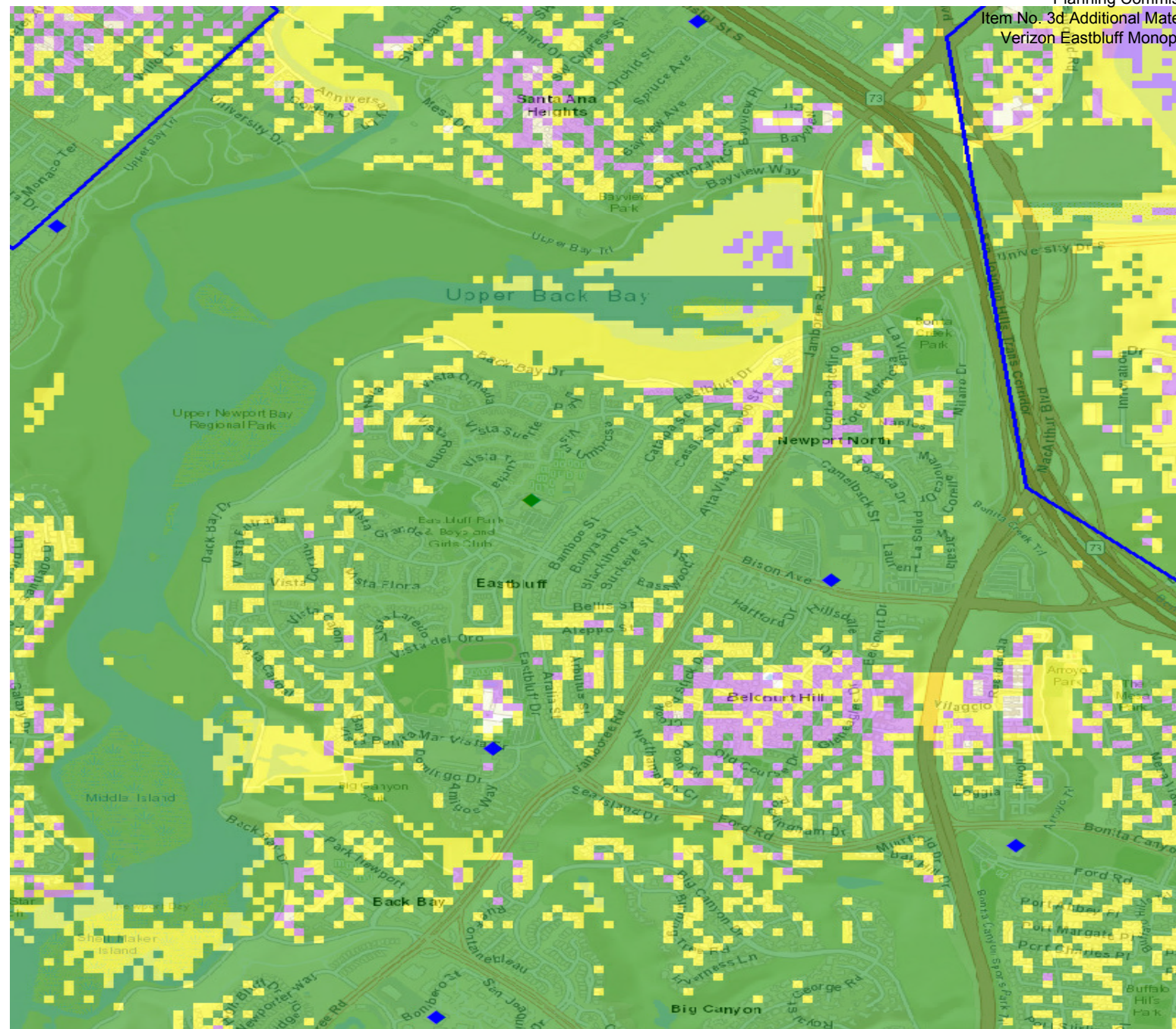








# Proposed Coverage



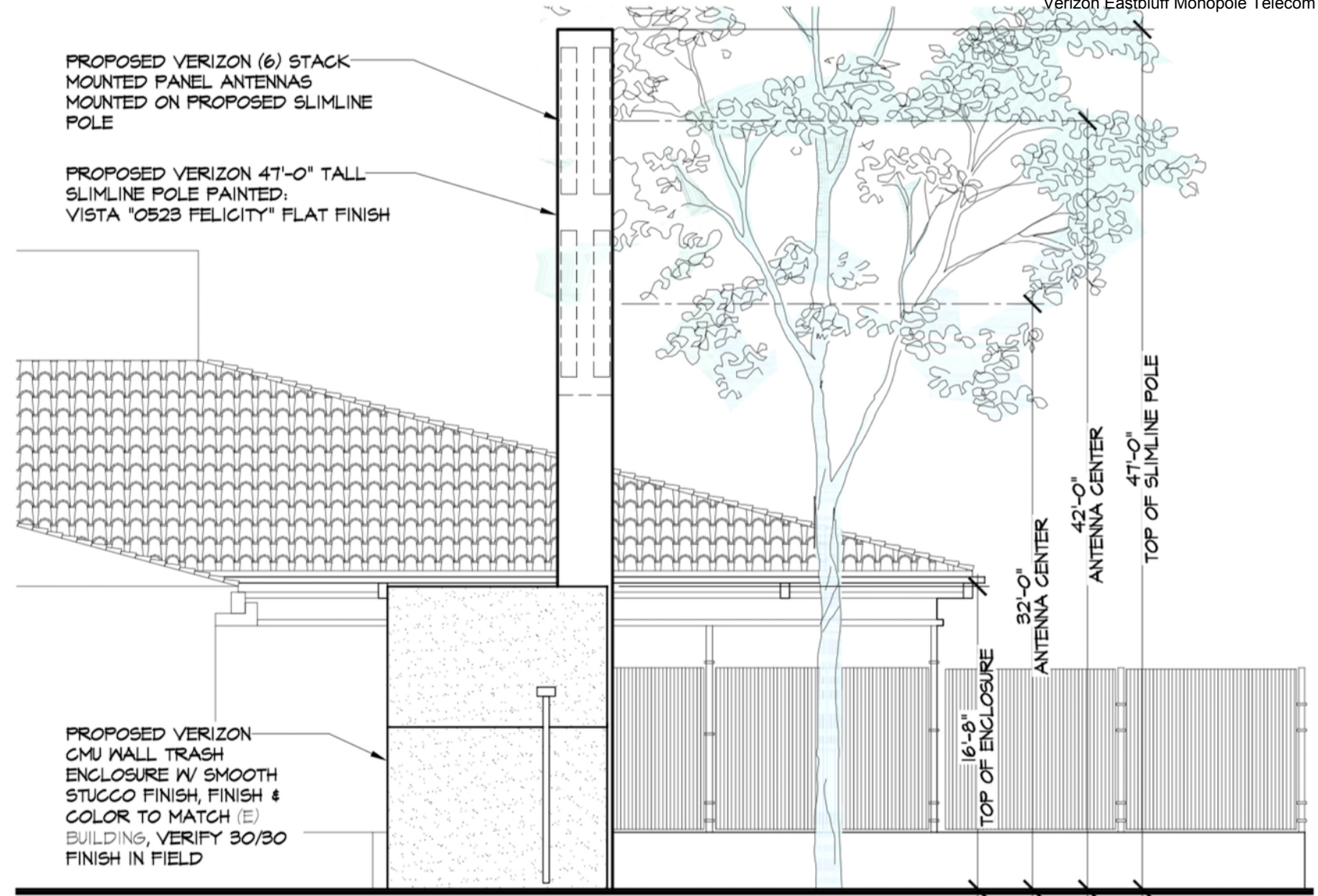
- GOOD
- OKAY
- WORST



# Site Design

47' Color Matched  
 Slimline Pole

16' Stucco Shelter  
 on Trash Enclosure



**SOUTHWEST ELEVATION**

SCALE @ 11x17: 3/32" = 1'-0"  
 SCALE @ 24x36: 3/16" = 1'-0"





These simulations are intended for graphical purposes only and not intended to be part of or to replace the information provided on the construction drawings

**Photosimulation of proposed telecommunications site: View from Northwest**

# Eastbluff Village Center

## North View





These simulations are intended for graphical purposes only and not intended to be part of or to replace the information provided on the construction drawings

PROPOSED

Photosimulation of proposed telecommunications site: View from South (Summer)

# Eastbluff Village Center South View





Proposed antennas mounted within proposed  
slimline pole



These simulations are intended for graphical purposes only and not intended

Eastbluff Village  
Center

South View

## New Service Benefits All Newport Beach

### Enhanced Service for:



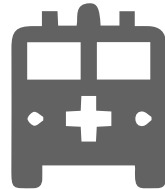
- **Residents**

- The Bluffs
- Eastbluff



- **Visitors**

- Eastbluff Village Center
- Newport Beach Tennis Club
- Eastbluff Park



- **First Responders**

- Newport Beach Police Department
- Newport Beach Fire Department

# Thank You