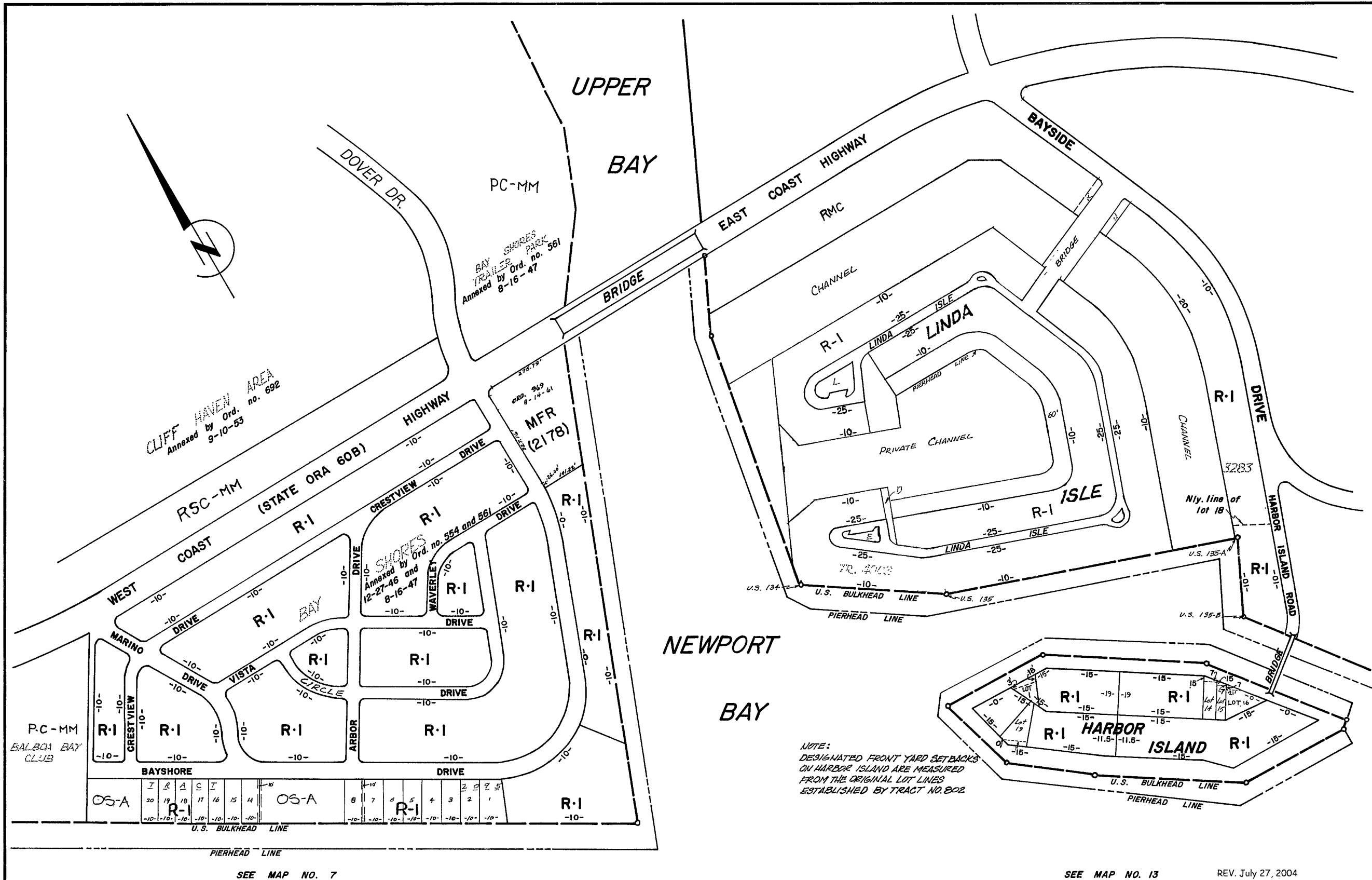


# **Attachment No. PC 3**

Districting Map No. 23

INTENTIONALLY BLANK PAGE



CLIFF HAVEN AREA  
Annexed by Ord. no. 692  
9-10-53

BAY SHORES TRAILER PARK  
Annexed by Ord. no. 561  
8-16-47

BAY SHORES  
Annexed by Ord. no. 554 and 561  
12-27-46 and 8-16-47

NOTE:  
DESIGNATED FRONT YARD SETBACKS  
ON HARBOR ISLAND ARE MEASURED  
FROM THE ORIGINAL LOT LINES  
ESTABLISHED BY TRACT NO. 802

SEE MAP NO. 7

SEE MAP NO. 13

REV. July 27, 2004

# DISTRICTING MAP CITY OF NEWPORT BEACH CALIFORNIA

R-A	AGRICULTURAL - RESIDENTIAL DISTRICT	C-N	NEIGHBORHOOD COMMERCIAL DISTRICT
R-1	SINGLE FAMILY DISTRICT	C-O	LIMITED COMMERCIAL - MULTIPLE RESIDENTIAL DISTRICT
R-2	DUPLEX RESIDENTIAL DISTRICT	C-1	LIGHT COMMERCIAL DISTRICT
MFR	MULTIPLE RESIDENTIAL	C-2	GENERAL COMMERCIAL DISTRICT
R-4	MULTIPLE RESIDENTIAL DISTRICT	R-3	REST'D MULTIPLE FAMILY RESIDENTIAL
B	COMBINING OR "B" DISTRICT	U	UNCLASSIFIED DISTRICT

FRONT YARD DEPTH IN FEET SHOWN THUS -10-

REVISIONS (CONT.)		
AUTHORITY	LOCATION	DATE
ORD. NO. 1536	BOUNDED ON THE NORTH BY WEST-CLIFF DR., EAST BY UPPER NEWPORT BAY, SOUTH BY WEST COAST HWY. AND WEST BY DOVER DR., (AMENDMENT NO. 408). FROM C-1-H AND R-4 AND -U- TO P-C.	12-17-73
ORD. NO. 1550	PROPERTY LOCATED AT 101, 107 AND 115 HARBOR ISLAND RD. ADJACENT TO THE HARBOR ISLAND BRIDGE, (AMENDMENT NO. 422). FROM -U- TO MFR	1-28-74
ORD. 90-24	REZONE SPECIFIC PROPERTIES TO MFR	6-28-90

REVISIONS		
AUTHORITY	LOCATIONS	DATE
ORD. NO. 646	BAYSHORES TRAILER PARK - U- TO R3 & C1H	
ORD. NO. 701	BAYSHORES TR'S 1014-1102-1140 U TO R1	
ORD. NO. 722	LINDA ISLE ANNEXATION	
ORD. NO. 849	TR. 2096 LOTS 1 TO 58 U TO R1	
ORD. NO. 857	TR. 3277 FROM U TO R1	
ORD. NO. 969	TR. 3285 FROM U TO R1	
ORD. NO. 969	POR. BLK. 54 IRVINE'S SUB. U TO R3	
ORD. NO. 1105	TR. 4003 LOTS 1-107 U TO R-1	
ORD. NO. 1488	TR. 2095 LOTS 1 TO 8 AND 14 TO 20 FROM U TO R-1	
ORD. NO. 85-5	A-353	
ORD. NO. 88-34	LOT 1, TRACT 802, FROM 15' TO 3 1/2' 18'	
	LOT 16, TR. 802, FROM 15' TO 0' E 7'	

ADOPTED BY...  
ORD. NO. 635 -- 12-26-50

Ord. No. 2000-020 Combined the Mariner's Mile Overlay to certain properties on Districting Maps #6, 21, & 23

ORD. NO. 94-36 REZONE BALBOA BAY CLUB 8/21/94

ORD. NO. 92-45 REZONE PROPERTIES TO RSC-H 12-9-92

100 0 100 200 300 400  
SCALE IN FEET

MAP NO. **23**

AUG. 14 1961  
AUG. 14 1961  
DEC. 14 1964  
FEB. 12 1973

SEPT. 25, 1985  
OCT. 26, 1988

INTENTIONALLY BLANK PAGE