

Attachment No. PC 5

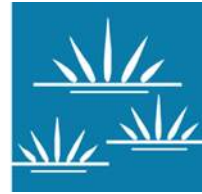
Biological Resources Update and
Potential Effects Associated with Fuel
Modification Plan Memorandum

INTENTIONALLY BLANK PAGE

MEMORANDUM

GLENN LUKOS ASSOCIATES

Regulatory Services



PROJECT NUMBER: 1085-08SAGE

TO: Shawna Schaffner

FROM: Thienan Pfeiffer
Tony Bomkamp

DATE: November 8, 2023

SUBJECT: Biological Resources Update and Potential Effects Associated with Fuel Modification Plan for the Sage Hill School Middle School and Gymnasium Addition Project

Glenn Lukos Associates, Inc. (GLA) prepared a technical memorandum dated December 6, 2022 to document the results of a biological/regulatory survey of areas within the campus of Sage Hill School where a proposed middle school and gymnasium would be constructed. The survey was conducted to assess for biological resources, including special-status plant and animal species, designated or proposed critical habitat, potentially suitable habitat for special-status species, and potentially jurisdictional waters and wetlands. At the time of the survey the majority of the site consisted of already developed sports fields and associated structures, including fencing, maintained grasses, ornamental plantings, and other school-related buildings. In the December 6, 2022 memorandum, GLA concluded that none of the special-status plants considered were expected to occur onsite due to lack of suitable habitat.

With regard to special-status animals, GLA concluded that the trees on site represent potential roosting habitat for western mastiff bat and that the offsite adjacent coastal sage scrub habitat to the north and northwest of the survey area has the potential to support coastal California gnatcatchers; as such, development of the site would be recommended to occur outside of the gnatcatcher breeding season, or a focused survey of the offsite adjacent areas for the species should occur. No other faunal species evaluated were expected to occur or nest onsite due to lack of suitable habitat, and no critical habitat or jurisdictional waters or wetlands were mapped onsite. For the mastiff bat, removal of suitable trees outside the maternity roosting season (June-August) would ensure that no impacts to this species would occur and therefore there would be no significant impacts to this species.

On June 23, 2023, GLA received the attached Fuel Modification Plan (FMP) for the *Sage Hill School Middle School and Gymnasium Addition* (project) and was asked to evaluate the proposed removal of vegetation and planting plan. The initial removal of vegetation within the project site should be conducted outside of the avian breeding season (generally February – July), or a pre-removal survey should be conducted to confirm the absence of nesting birds. Additional Notes provided on page 1 of the FMP provides the necessary measures to ensure: 1) that nesting birds will not be impacted by routine maintenance activities within the fuel modification zones, and 2) that no plant material selected for the FMP is listed as invasive by the California Invasive Plant Council. The FMP provides adequate measures to ensure that nesting birds would not be impacted by routine

MEMORANDUM

November 8, 2023

Page 2

maintenance and that planted species adjacent to the offsite coastal sage scrub habitat would not consist of any that are listed as invasive.

Relative to the Landscaping and associated fuel management, it is important to note that the original landscape plans (attached) show the Fuel Modification Zone (FMZ) in question as having been originally landscaped as Front Slope and Landscape Drifts, and for Front Slope vegetation even noting that this is “transition planting between the NCCP zone and the campus,” including some ornamentals as well. None of the species in these two zones comprised any coastal sage scrub. The FMZ planting will not include any Cal-IPC listed plants as confirmed in the notes.

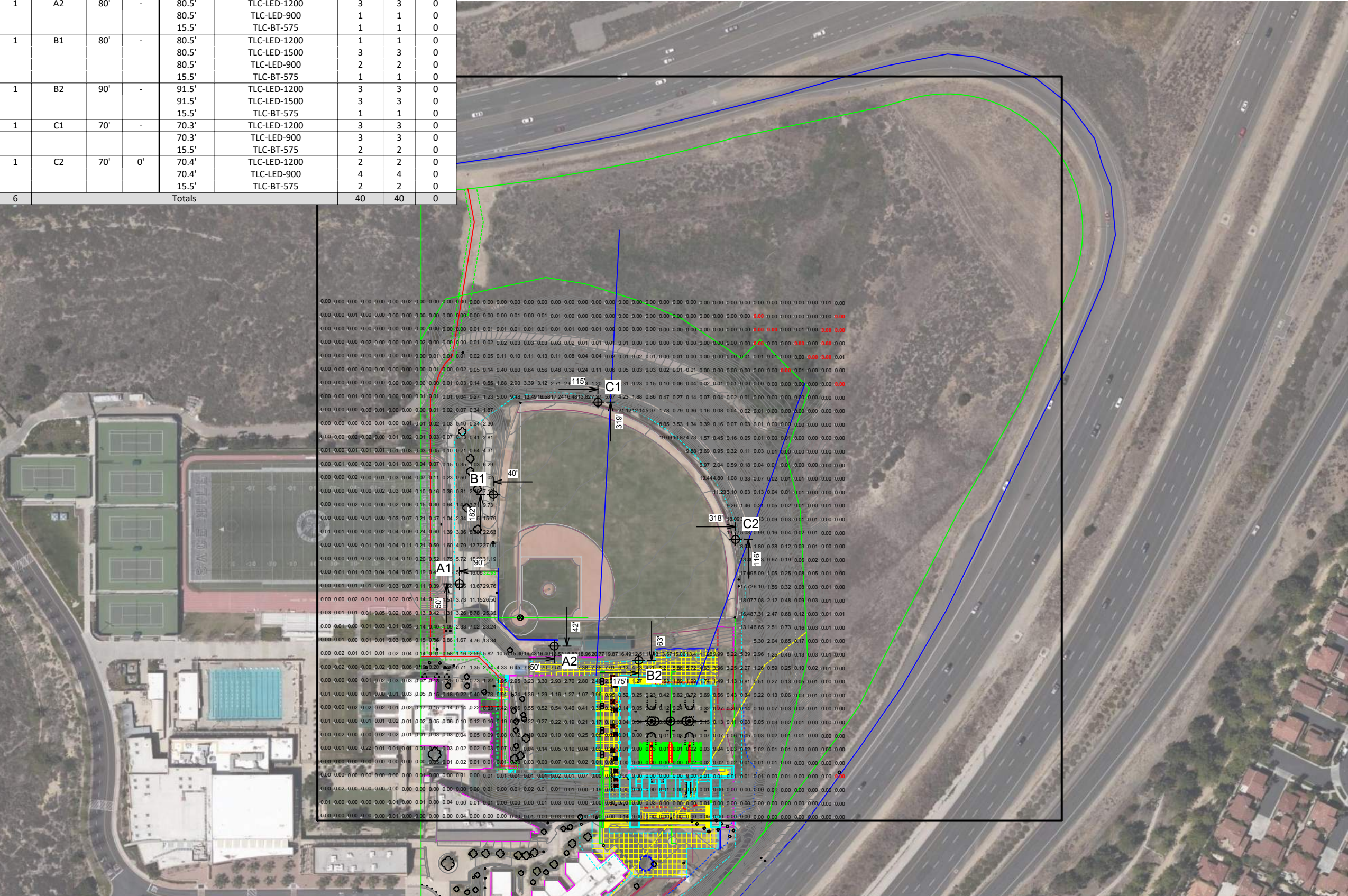
Given this area was landscaped from the beginning with transitional non-coastal sage scrub species, the presence of a few coyote brush individuals, observed by GLA in the FMZ does not disqualify the project from CEQA exemption. This area always was a maintained landscaped zone and the FMZ plantings will not include any invasives that would have the potential to change the CSS conditions adjacent to the toll road.

Finally, GLA has reviewed the photometric analysis [Attached] prepared by Musco to determine whether the ballfield lighting would result in light spillage that would result in significant impacts on the coastal sage scrub within the NCCP/HCP boundaries. The photometric analysis shows that the light spillage for areas adjacent to the NCCP area is 0.1-foot candle or less, which is the threshold such that no significant impacts would occur.

Please contact me with any questions.

p:1085-8c.mem_110823

Equipment List For Areas Shown								
Pole				Luminaires				
QTY	LOCATION	SIZE	GRADE ELEVATION	ABOVE GRADE LEVEL	LUMINAIRE TYPE	QTY/POLE	THIS GRID	OTHER GRIDS
1	A1	80'	10'	90.5'	TLC-LED-1200	3	3	0
				90.5'	TLC-LED-1500	1	1	0
				25.5'	TLC-BT-575	1	1	0
1	A2	80'	-	80.5'	TLC-LED-1200	3	3	0
				80.5'	TLC-LED-900	1	1	0
				15.5'	TLC-BT-575	1	1	0
1	B1	80'	-	80.5'	TLC-LED-1200	1	1	0
				80.5'	TLC-LED-1500	3	3	0
				80.5'	TLC-LED-900	2	2	0
				15.5'	TLC-BT-575	1	1	0
1	B2	90'	-	91.5'	TLC-LED-1200	3	3	0
				91.5'	TLC-LED-1500	3	3	0
				15.5'	TLC-BT-575	1	1	0
1	C1	70'	-	70.3'	TLC-LED-1200	3	3	0
				70.3'	TLC-LED-900	3	3	0
				15.5'	TLC-BT-575	2	2	0
1	C2	70'	0'	70.4'	TLC-LED-1200	2	2	0
				70.4'	TLC-LED-900	4	4	0
				15.5'	TLC-BT-575	2	2	0
6	Totals					40	40	0



SCALE IN FEET 1 : 150

0' 150' 300'

ENGINEERED DESIGN By: • File #199459C • 08-Nov-23

Pole location(s) ⊕ dimensions are relative
to 0,0 reference point(s) ✕

Sage Hill School Baseball

Newport Coast,CA

Grid Summary	
Name	Blanket Grid
Size	1100' x 1100'
Spacing	20.0' x 20.0'
Height	3.0' above grade

Illumination Summary	
	MAINTAINED HORIZONTAL FOOTCANDLES
	Entire Grid
Scan Average	1.20
Maximum	33
Minimum	0
Avg/Min	-
Max/Min	-
UG (adjacent pts)	5435.15
CU	0.10
No. of Points	1232
LUMINAIRE INFORMATION	
Applied Circuits	A
No. of Luminaires	40
Total Load	40.84 kW

Guaranteed Performance: The ILLUMINATION described above is guaranteed per your Musco Warranty document and includes a 0.95 dirt depreciation factor.

Field Measurements: Individual field measurements may vary from computer-calculated predictions and should be taken in accordance with IESNA RP-6-15.

Electrical System Requirements: Refer to Amperage Draw Chart and/or the "Musco Control System Summary" for electrical sizing.

Installation Requirements: Results assume ± 3% nominal voltage at line side of the driver and structures located within 3 feet (1m) of design locations.



We Make It Happen.

Not to be reproduced in whole or part without the written consent of Musco Sports Lighting, LLC. ©1981, 2023 Musco Sports Lighting, LLC.

ILLUMINATION SUMMARY

INTENTIONALLY BLANK PAGE