

**NEWPORT BEACH CIVIC CENTER
SCULPTURE EXHIBITION
PHASE X
RECOMMENDED SELECTIONS**



PROCESS TO DATE :

Submissions:

- From Aug. 1st through Sept. 29, artists, gallery owners, artist reps, etc., were invited to submit eligible works through the Call for Entry (aka CaFE) platform
- After review for eligibility and suitability for outdoor installation, 79 submissions were presented for review

Jurying:

- From Sept. 30 through Oct. 5, the jury, consisting of all active Arts Commission members and two outside guests, had the opportunity to review application materials on CaFE and score each application from 1 to 7.
- At the Oct. 9 Arts Commission Meeting, the jury reviewed the results of scoring and, after discussion and consultation with Arts Orange County representatives, 30 works were chosen for presentation in a public poll

Public Poll:

- Poll was published on a dedicated page on ArtsOC's website SparkOC.com, which is built on the WordPress platform. A WordPress plugin called TotalPoll generated the poll and collected votes
- Poll was open to Newport Beach residents for voting from **October 5 through December 15**.
- Public poll results were tabulated and presented to Arts Commissioners to guide process of finalizing Recommended Selections and Alternates

PUBLIC POLL SUMMARY:

- Participants could vote for up to ten favorite works
- Security measures include:
 - Users required to complete a CAPTCHA form designed to catch bot behavior
 - Users required to submit a valid e-mail address and provide their ZIP code and city of residence, only votes from Newport Beach ZIP codes will be counted
 - Users required to provide a valid E-mail address
- For each work, a single image judged to be the best to represent the work was placed on a slide with identical dimensions and plain black background, with the work's title and artist's name below
- The order of the works in the poll were randomized for each visitor; so that no single work gains advantage from their position
- Raw vote logs of both accepted and declined voting attempts were examined to detect any patterns or voter behavior which, in Arts Orange County's judgment, may give rise to a misleading interpretation of the "voice of the community".
- Public poll results are non-binding and advisory, to be used in final jury discussions for selecting slate of Finalists.
- After concerns expressed by Arts Commissioners and Library Staff, ArtsOC made updates to the poll including the following:
 - Graphic design tweaks to increase the visibility of the circle to be clicked on under each work
 - The security setting which locked out IP addresses for 24 hours after multiple votes was reduced to 1 hour to increase participation at Library PCs
- After review, a total of 230 voters cast 1,736 eligible votes

SAMPLE VIEW OF POLL :

PUBLIC POLL
Newport Beach Civic Center Park Sculpture Exhibition

The City of Newport Beach (City) is seeking up to ten artworks to display for three years in the heart of Newport Beach in Civic Center Park for Phase X of its ongoing Invitational Sculpture Exhibition. Submissions are now complete for this phase, and, after reviewing all submitted works for eligibility, artistic merit, durability, safety, and other factors, the jury consisting of the City Arts Commission and two outside experts has qualified 30 works for consideration.

The public's vote will help this jury determine 10 Finalists and between 3 and 5 Alternates to present to the City Council for approval.

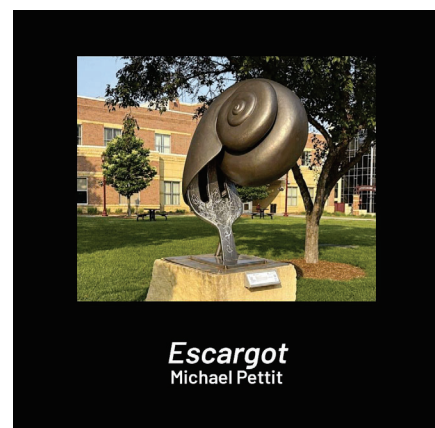
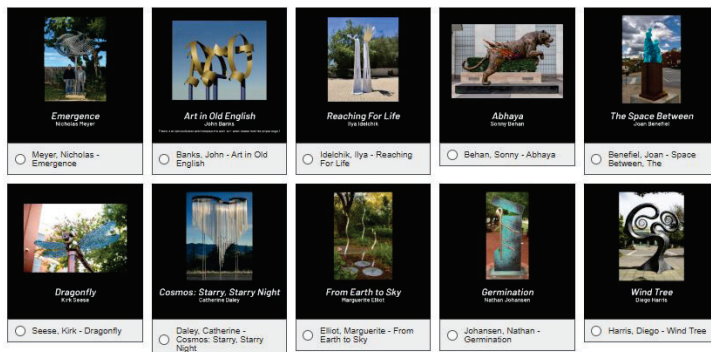
How it works:

- Voting is online only.
- Voting is for Residents of Newport Beach only. Votes from ZIP codes outside of Newport Beach will not be counted.
- The period for voting ends December 5, 2025.
- Voters may select up to ten favorite works among those submitted.
- Individuals may only cast their votes once. Voters must provide a valid e-mail address and their ZIP code.
- Finalists and Alternates recommended by this poll must be reviewed to confirm that the works are still available, that there are no unforeseen issues with regards to installation and/or safety, and that a contract can successfully be executed with the artist. The Newport Beach City Council will make the final decision regarding the works to be installed.

The selection and installation process for the Sculpture Exhibition in Civic Center Park is managed under contract with the City of Newport Beach by Arts Orange County, the nonprofit countywide arts council. <https://artsoc.org/>

VOTING OPEN TO NEWPORT BEACH RESIDENTS ONLY: Click on each image to see a full-size picture of the work; then click the "X" symbol in the upper corner to close the full-size image and return to the poll. If you wish to zoom in closer, you can do so on your phone/tablet browser; for a computer, you'll need to right-click and save the image then open and zoom in using your own computer's image-viewing software.

Up to 10 of these works will be installed for three years in Civic Center Park. You can choose up to 10 works that you would like to see on display. 30 works have qualified for this public poll - it's recommended that you scan through all before casting your votes!



**Individual Slide enlarges
when clicked**

PHASE X RECOMMENDED SELECTIONS (10)



Daley, Catherine
(Windsor, CA)
Cosmos: Starry, Starry Night

Size: 10' H x 5' x 30"

Weight: 200 lbs.

Medium: Aluminum, Plexiglass, Stainless Steel



Harris, Diego
(Upper Lake, CA)
Wind Tree

Size: 8' 8" H x 7' 2" W x 3' 7" W

Weight: 250 lbs.

Medium: Corten Steel over Steel Rebar



Harris, Diego. *Wind Tree*

Linke, Harold
(Lake Oswego, OR)
Spiral Dance

Size: 144" x 40" x 50"

Weight: 75 lbs.

Medium: Advanced composite with a
polychrome white finish, climate resistant,
round steel plate for mounting



Linke, Harold. *Spiral Dance*

Knecht, Zan
(Grand Rapids, MI)
Coming Through

Size: 10' x 5' x 2'

Weight: 300 lbs.

Medium: Recycled corten steel



Knecht, Zan. *Coming Through*

Robertson, Tamara
(Oil City, LA)
Open Heart

Size: 10' x 10' x 18", base 4' x 4'

Weight: 400 lbs.

Medium: Welded Steel



Robertson, Tamara. *Open Heart*

Martinek, Clark
(Mitchell, SD)
Intended Destination

Size: 14' H x 22" x 22"

Weight: 350 lbs.

Medium: Steel, Iron



Martinek, Clark. *Intended Destination*

Gall, Alex
(Vista, CA)
Voyage of a Giant

Size: 72" x 84" x 80"

Weight: 230 lbs.

Medium: Steel, Corten Steel, Solar LED



Gall, Alex. *Voyage of a Giant*

Plaisted, Chris
(New Milford, CT)
Wave, The

Size: 7.5' H x 6' W x 4' D

Weight: 500 lbs.

Medium: Steel, Stainless Steel



Plaisted, Chris. *Wave, The*

Bassoff, Solomon
(North San Juan, CA)
Joy Ride

Size: 80" H x 136" W x 63" D

Weight: 1,650 lbs.

Medium: Concrete, Steel Glass



Bassoff, Solomon. *Joy Ride*

Banks, John
(Henderson, NV)
Art in Old English

Size: 82" H x 60" W x 60"D

Weight: 360 lbs.

Medium: Steel



Banks, John. *Art in Old English*

PHASE X
ALTERNATES
(4)



Meyer, Nicholas
(Temecula, CA)
Emergence

Size: n/a

Weight: n/a

Medium: Powder-coated Steel



Meyer, Nicholas. *Emergence*

Seese, Kirk
(Lutherville, MD)
Dragonfly

Size: 14' H x 4.5' W x 4.5' D

Weight: n/a

Medium: Steel and Repurposed Auto Parts



Seese, Kirk. *Dragonfly*

Idelchik, Ilya
(San Diego, CA)
Reaching For Life

Size: 13' H x 2' W x 2' D

Weight: n/a

Medium: Metal Mash, Fiberglass Resin, Epoxy
Paste



Idelchik, Ilya. *Reaching For Life*

Muzzarelli, Aldo
(Mauldin, SC)
Butterfly Enchanter, The

Size: 78" x 15" x 15"

Weight: 80 lbs.

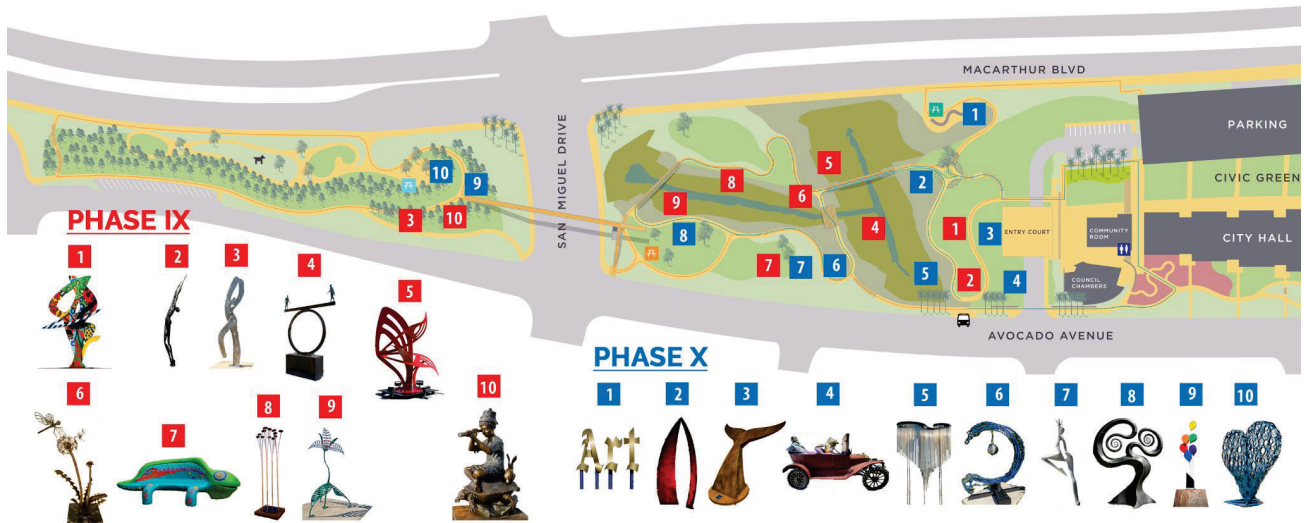
Medium: Steel, Resin, Stoneware Paste



Muzzarelli, Aldo. *Butterfly Enchanter, The*

RECOMMENDED INSTALLATION SITES

Including Phase IX works



THANK YOU!

