

# **Attachment No. 4**

Phase 2 Outreach and Engagement Summary



# Newport, Together.

**PHASE TWO OUTREACH SUMMARY**  
**City of Newport Beach General Plan Update**

Prepared by Kearns & West, in consultation with Dudek

MARCH 2025



# Table of Contents

Executive Summary	01
Getting the Word Out	04
Digital Engagement	05
Community Workshops	07



**Newport,  
Together.**



## Section 1

# EXECUTIVE SUMMARY

The City of Newport Beach (City) continues its comprehensive General Plan Update process. The success of the General Plan Update relies on the involvement of community members, residents, property owners, and other stakeholders in shaping and forming the vision, goals, and policies of the General Plan. The City is committed to conducting a transparent, inclusive, and meaningful planning process that values community input.

This document summarizes phase two outreach conducted for the General Plan Update between October 15, 2024, and January 5, 2025. Phase two outreach focused on sharing the vision statement and guiding values, draft ideas to support each element with the community (see Figure 1). Specific sections of this summary include:

- ▶ This overview, including an overview of a General Plan Update process, outreach types, engagement reach, General Plan Advisory Committee (GPAC) and General Plan Update Steering Committee (GPUSC) collaboration, and key themes;
- ▶ Getting the word out, which describes paid advertisements, social media, and other notification types;
- ▶ Digital engagement through the [Newport, Together website](#), including the online comments and number of visitors; and
- ▶ Community workshops, including schedule, locations, and key themes.



**Figure 1:** Phases of Community Engagement and Outreach.



*Community members discussing goal ideas at a community workshop.*

## About the General Plan Update

A General Plan is a document that guides future long-term development and is the foundation for decision-making for a community's physical development. State law requires that every city have a current General Plan, which local governments use to make decisions about land use, housing, transportation, infrastructure, and parks, among other issues. While planning horizons vary, the General Plan typically sets the direction for the next 20-30 years.

## Outreach Type and Engagement Reach

Phase two outreach was designed to allow the community to review draft materials based on phase one input and provide comments, suggestions, and input. Community members could participate in the planning process in ways that suited their interest level and availability. Outreach types for phase two included digital engagement through the Newport, Together website and in-person workshops in the Newport Beach community.



Through digital engagement and community workshops, **97 community members were engaged**. In addition, 94,108 residents were reached with paid advertisements, social media, and emails.

## General Plan Advisory Committee Collaboration

A General Plan is a document that guides future long-term development and is the foundation for decision-making for a community's physical development. State law requires that every city have a current General Plan, which local governments use to make decisions about land use, housing, transportation, infrastructure, and parks, among other issues. While planning horizons vary, the General Plan typically sets the direction for the next 20-30 years.

### KEY THEMES

During phase two outreach, key themes were identified based on community feedback from digital engagement and at the community workshops. Key themes are listed below. See Sections 3 (Digital Engagement) and 4 (Community Workshops) for details on additional input received.

- ▶ Maintain and enhance the character and charm of Newport Beach.
- ▶ Improve connectivity through bike and pedestrian paths and alternative modes of transportation, such as a mini-shuttle or trolley.
- ▶ Invest in resources for senior citizens and young families, including housing and community support programs.
- ▶ Focus on maintaining the quality of life in Newport Beach by preserving open spaces, improving public amenities, and offering diverse recreational options.
- ▶ Promote partnerships and collaborations to support the city's cultural, educational, and recreational goals.
- ▶ Enhance public spaces with art installations, murals, and sculptures.
- ▶ Promote harbor, bay, and beach conservation and public accessibility.
- ▶ Integrate conservation efforts with development plans, such as creating natural dunes and promoting wildlife preservation.
- ▶ Focus on sustainable building designs, green infrastructure, and eco-friendly technology, such as solar-powered electric vehicle (EV) chargers.
- ▶ Explore long-term investment strategies for maintaining and upgrading City resources and public services.



## Section 2

# GETTING THE WORD OUT

Multiple notification methods were used to inform the Newport Beach community about phase two of the General Plan Update process, including a paid digital advertisement distributed in Stu News Newport. The City’s marketing team collaborated in efforts announcing phase two, sharing updates, and inviting community members to provide input via the City Manager’s newsletter and social media posts on Instagram and Facebook (see Figure 2). In addition, strategic email announcements were distributed through the Newport, Together website ([newportbeachca.gov/gpupdate](http://newportbeachca.gov/gpupdate)).



**Figure 2:** Two Social Media Posts Announcing Phase Two and Invitation to Community Workshops.

As shown in Table 1, as of January 5, 2025, advertisements, social media, and dedicated emails had reached **94,108** residents, community members, and stakeholders.

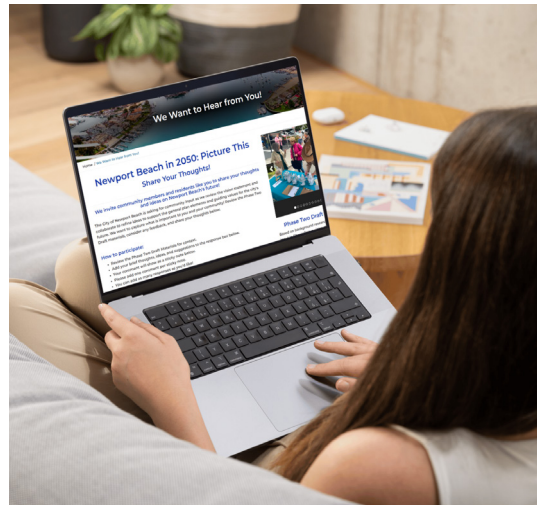
**Table 1:** Outreach Notifications by Type and Reach

Type	Run Time/ Number of Posts	Dates	Reach
Digital Newspaper (Stu News Newport)	35 days	October 29 to December 2	19,658
Instagram	8	October 28,30, November 4, 13, 19, December 2, 4, 5	10,548
Facebook	8	October 28, 30, November 4, 13, 19, December 2, 4, 5	1,891
Newport, Together Emails	8	October 25, November 4, 8, 15, 19, 25, December 2, 19	4,191
City Manager Newsletter	3	October 25, November 22, December 20	57,820

## Section 3

# DIGITAL ENGAGEMENT - Newport, Together Website

The dedicated General Plan Update website, Newport, Together, continues to inform the community about the General Plan Update process, announce upcoming community workshops, and offer opportunities to provide input via a digital engagement activity. The Newport, Together website is updated frequently in collaboration with City staff and the GPAC. As of January 5, 2025, the website has had **9,840** unique visitors.



## Online Survey Input: We Want To Hear From You!

The Newport, Together website offers an ongoing digital engagement page to allow community members to provide feedback if they miss a workshop or wish to offer additional input after attending a workshop. On the Get Engaged! page, visitors are asked to review the draft materials and respond to the following question: When you picture Newport Beach in 2050, what does it look like? Community responses are posted on a digital bulletin board and viewable to all visitors (see Figure 3). Below are the primary themes from input collected from November 1, 2024, to January 5, 2025.

### ► **Maintain the Charm of Newport Beach:**

Limit residential buildings, preserve cottage charm, consider designs of future developments

► **Environmental Preservation:** Protect open spaces around the city; keep the beaches clean and accessible to the community

### ► **Harbor and Waterfront Management:**

Increase public access to docks and waterfront space, such as affordable boating; promote tourism around the bay with regulations for environmental conservation

### ► **Historic and Cultural Preservation:**

Protect historical and culturally significant sites; preserve waterfront clubs, moorings, and other landmarks around the harbor

### ► **Parking and Community**

**Accessibility:** Consider parking alternatives and cost; ensure ADA accessibility to the beaches; add community amenities and gathering sites, such as a 9-hole golf course or pickleball



# Newport, Together.

## Newport Beach in 2050: Picture This

### Share Your Thoughts!

We invite community members and residents like you to share your thoughts and ideas on Newport Beach’s future!

The City of Newport Beach is asking for community input as we review the vision statement and collaborate to refine ideas to support the general plan elements and guiding values for the city’s future. We want to capture what is important to you and your community! Review the Phase Two Draft materials, consider any feedback, and share your thoughts below.

#### How to participate:

- Review the Phase Two Draft Materials for context.
- Add your brief thoughts, ideas, and suggestions to the response box below.
- Your comment will show as a sticky note below.
- Please add one comment per sticky note.
- You can add as many responses as you’d like!
- Add a general response OR an element-specific response or idea (Select the specific element you wish to respond to in the ‘category’ drop-down option below).

**When you picture Newport Beach in 2050, what does it look like?**

Add your brief comment or idea below! Your thoughts will appear as a sticky note below. If you have an element-specific comment, please choose the category to which it relates in the drop-down below. (max 140 characters).

Tell us your idea

You have 140 characters left

Category

Select

Screen name \*

Enter user name

Email address

Enter email

[Moderation Policy](#)

Submit

<p>28 December, 2024 Tony says:</p> <p>"Partner private/public development (like Lido House) of Newport Beach Golf Course. Executive 9 hole, pickleball and multi-tier driving range"</p> <p>0</p>	<p>19 December, 2024 BW says:</p> <p>"affordable boating and affordable moorings. The city needs to understand that it's not just the home for multi-millionaire"</p> <p>1</p>	<p>7 December, 2024 Sandy says:</p> <p>"I would like to include images but there is not a way to so. Please provide access to submit images I have a rendering of my proposal."</p> <p>0</p>
<p>5 December, 2024 Angel says:</p> <p>"Keep open space and reserves"</p> <p>1</p>	<p>5 December, 2024 Angel says:</p> <p>"Identify historical properties along Balboa Peninsula, Village, Balboa Island, elsewhere so that future remodels adhere to historical aspect"</p> <p>0</p>	<p>5 December, 2024 Angel says:</p> <p>"Keep Peninsula point a slow quiet community, that's its charm."</p> <p>0</p>
<p>7 December, 2024 Sandy says:</p> <p>"The entire inner harbor will be a beautiful walking path that is uninterrupted by private docks and piers. We will be the gem of the pacific"</p> <p>0</p>	<p>5 December, 2024 Angel says:</p> <p>"Keep the tourism boats operating in the bay at a number cap(boat rentals, harbor tours, whale watching, fishing excursions) protect sea life"</p> <p>1</p>	<p>5 December, 2024 Angel says:</p> <p>"How about instead of a community pool at lower castaways park, make it a more useable spot such as North Star beach for access to back bay"</p> <p>1</p>
<p>5 December, 2024 Angel says:</p> <p>"Near the beach in particular...keep free public street parking."</p> <p>0</p>	<p>2 December, 2024 Rinder says:</p> <p>"Some sort of incentive to STOP the building of McMansions!!! We need to SAVE THE COTTAGES before the charm is completely lost."</p> <p>4</p>	<p>2 December, 2024 Rinder says:</p> <p>"Access to Balboa Island beaches for handicapped and seniors. Currently unless you can climb over a wall you can't get to beach."</p> <p>0</p>

Figure 3: Newport, Together Website “We Want to Hear From You” Page.

## Section 4

# COMMUNITY WORKSHOPS

The City hosted four community workshops during phase two of the General Plan Update. Each workshop focused on two General Plan elements or topics: Recreation & Natural Resources; Coastal Resilience & Safety; Arts and Culture & Historical Resources; and Land Use & Harbor, Bay, and Beaches. Newport Beach community members, residents, and stakeholders were invited to review draft materials and provide input.

Each workshop was designed to share the draft vision statement with community members – reflecting background research and phase one community input – provide an opportunity for community members to review the draft guiding values, generate goals for Newport Beach’s future in 2050, and offer an opportunity to generate ideas for achieving those goals. Attendees included members of the public who also play a more formal role as members of the GPAC and GPUSC.

The community workshop schedule is presented in Table 2. The following section provides an overview of each activity involving the referenced draft materials (see Appendix A), the number of community members engaged, and key themes heard. Additional input can be found in Appendix B.

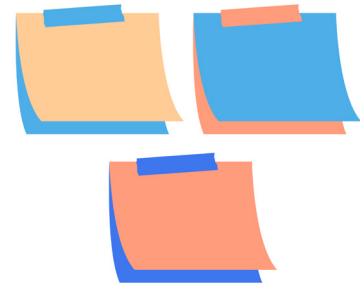
**Table 2:** *Community Engagement Schedule*

Workshop and Location	Date and Time	Attendance
<b>Recreation &amp; Natural Resources</b> Friends Room, Central Library: 1000 Avocado Avenue, Newport Beach	Thursday, November 14th 6:00 – 8:00 p.m.	8
<b>Coastal Resilience &amp; Safety</b> Community Room, Civic Center Park: 100 Civic Center Dr, New- port Beach	Thursday, November 21st 6:00 – 8:00 p.m.	6
<b>Arts &amp; Culture and Historical Resources</b> Community Room, Civic Center Park: 100 Civic Center Dr, New- port Beach	Wednesday, December 4th 6:00 – 8:00 p.m.	9
<b>Land Use &amp; Harbor, Bay and Beaches</b> Community Room, Marina Park, 1600 W Balboa Blvd, Newport Beach	Thursday, December 5th 6:00 – 8:00 p.m.	32



# WORKSHOP ACTIVITIES

Participants were invited to participate in three activities to provide input on the draft materials and how they picture Newport Beach in 2050. A short presentation was provided at the beginning of each workshop to introduce the General Plan Update process, the workshop topics, and the input activities. An additional activity was included for the final workshop, Land Use & Harbor, Bay, and Beaches. The following summarizes the activities and key themes from participant input.



## Visioning Activity

During the workshop welcome and registration, participants were given six blue sticky dots. Once they entered the meeting room, they were directed to the draft vision statement poster and asked to use the blue sticky dots to indicate the sentences or sections that resonated with them. A project team member was available to help with directions and answer questions. The complete draft vision statement can be found in Appendix A.



*Participants placing blue sticky dots on the vision statement during a community workshop.*

## Participant Input

The sections or sentences of the vision statement are presented sequentially in Table 3, with columns indicating the number of blue sticky dots placed by participants at each community workshop. The total number of dots is indicated in the final column.



Vision Statement Sentence	Workshop Topics				
	Recreation & Natural Resources	Coastal Resilience & Safety	Arts & Culture and Historical Resources	Land Use & Harbor, Bay, and Beaches	Total Dots
In the year 2050, Newport Beach is renowned as a coastal beacon of natural splendor, unparalleled amenities, and dynamic culture.	1	2		8	11
The City maintains a superior quality of life by successfully balancing the needs of residents, businesses, and visitors.	4		3	11	18
Newport Beach is a distinguished city adorned with unique villages, coastal resources, and natural open spaces; creating a unique sense of place in an idyllic setting.	4		3	5	12
A destination for many, Newport Beach offers a sophisticated lifestyle with access to luxury amenities and activities.			2	1	3
The City's commitment to the protection of the natural environment has made Newport Beach a leader of environmental stewardship in the region.	4	1	2	10	17
Strong partnerships with outside agencies and organizations have cultivated successful collaboration on regional transportation, land use, coastline, and other issues of mutual concern.		2		4	6
The sweeping views of and access to beaches, the harbor, and the coast have been preserved and are maintained for future generations.	7	3	3	26	39
Growth and development have been accommodated in a manner that seamlessly blends new and old into the fabric of the community, keeping pace with changing community needs while maintaining adequate infrastructure and high quality of life.	2		2		4

Vision Statement Sentence	Workshop Topics				
	Recreation & Natural Resources	Coastal Resilience & Safety	Arts & Culture and Historical Resources	Land Use & Harbor, Bay, and Beaches	Total Dots
The needs of the community are met through a variety of strategically located uses including vibrant commercial services, offices and employment centers, public facilities including community centers and libraries, parks and open space, schools, residential neighborhoods, and visitor-serving uses.	3		3	5	11
Strategic planning and infrastructure investments continue to protect the health and longevity of the built and natural environment.				4	4
Adaptation and resilience are central to all decision-making and have empowered Newport Beach to maintain a vibrant coastal lifestyle that strengthens the local economy.	1	2		4	7
The City's world-class public safety services safeguard its residents and visitors, creating safe and friendly neighborhoods.	2	1	4	13	20
Residents champion arts, culture, and education as pillars of the community and take pride in their historic legacy.	2		4	4	10
The community embraces innovation, and their visionary outlook has positioned them as frontrunners in best practices for adopting new technologies.	2	1	2		5
Newport Beach is distinguished for its beauty, culture, resilience, and inclusivity for residents of all stages of life and backgrounds.	1	1	2	9	13





## General Plan Update Presentation

Following the vision activity, a short presentation was provided to familiarize participants with the General Plan, the intention of the update process, why the plan is important to the community, an overview of the workshop topic or element, and explaining the subsequent workshop activities. Every community workshop included the same information with updates to the section on the specific workshop topics.

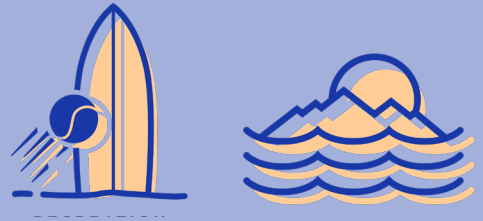
## Draft Guiding Values Activity

In the next activity, participants were asked to review the draft guiding values (see Appendix A) and consider how they related to the workshop topic. They were asked to respond to the following questions:

- ▶ What do you envision seeing in Newport Beach in 2050 to fulfill this guiding value?
- ▶ What is important to you with this guiding value?
- ▶ Is anything missing?

Participants brainstormed ideas with each other and the project team and added written comments using sticky notes on each of the seven guiding value posters. Key themes identified from participant input are listed below, by their respective workshop, with no regard to priority. All written comments provided during the workshop activities can be found in Appendix B.

# KEY THEMES



- ▶ **Improved Walkability and Transportation around the City:** Increase walkability between points of interest, wayfinding signage, and wheelchair access; add walking and biking paths; add a shuttle around the city, especially between destination points.
- ▶ **Increase Education and Information:** Emphasize cultural education, resources, and programming; ensure transparency of recreation opportunities and low-cost options for all generations.
- ▶ **Develop Partnerships:** Consider partnerships with other organizations in the city, private and public.
- ▶ **Implement Citywide Safety Measures:** Increase safety measures for e-bikes.
- ▶ **Focus on Conservation and Education of the Community:** Collaborate with schools to protect open spaces and teach about the importance of conservation.
- ▶ **Balance Infrastructure and Building Development:** Better balance development and protecting open spaces, especially in the coastal areas.
- ▶ **Prioritize Investing in Funding and Grants:** Dedicate staff to facilitate grant funding to protect natural resources; balance the maintenance cost for open spaces and keep it free for the public; invest in education on native species and resources for the public.
- ▶ **Opportunity for Additional Public Installations and Educational Tools:** Add a natural history museum or increase efforts to showcase the Back Bay Science Center and add art installations to show different natural resources or organisms around the city.



*Recreation & Natural Resources participants review draft guiding values and brainstorm ideas.*

# KEY THEMES



- ▶ **Funding and Infrastructure Investment:** Secure long-term funding options to use over time; Add non-car methods of transportation; add citywide connected bike and walking paths.
- ▶ **Natural Solutions to Preserve the Coast:** Consider an alternative to a sea wall; keep the Balboa Island Ferry; protect the natural resources; protect homes from flooding.
- ▶ **Maintain the Charm of Newport Beach:** Embrace and emphasize local events and activities, such as boat parade and 4th of July celebrations along the harbor.
- ▶ **Invest in City Programming and Support:** Continue supporting senior citizens with services; consider adding a satellite OASIS Senior Center on the Newport Peninsula.
- ▶ **Educational Resources and Transparency with the Residents and Visitors:** Collaborate with HOAs and neighborhood groups to provide preparedness plans and education to residents; keep the City website updated with natural disaster tools; include safety resources for visitors, such as an electronic bulletin board.
- ▶ **Infrastructure Adaptations:** Incorporate grid alternatives and battery storage in case of electricity outage; prepare for autonomous vehicles; use non-toxic fire-retardant.
- ▶ **Funding Investment:** Research funding sources to supplement the City budget, such as hotel tax or state/federal funding.
- ▶ **Transportation and Circulation:** Work with schools to educate the younger generation on safety measures, such as with e-bikes; ensure evacuation routes are accessible.



*Coastal Resilience & Safety participants review draft guiding values and brainstorm ideas.*



# KEY THEMES

► **Public Art and Beautifying Public Spaces:**

Increase public and private collaborations for art installations, sculptures, and murals; add QR codes on art installations to provide information or visual guides for art and historical resources; sponsor art programs and host cultural events relevant to students and young adults, and families.

► **Preservation and Sustainability:** Focus on revamping historic sites and integrating history into environmental conservation; promote sustainable building designs and art installations.

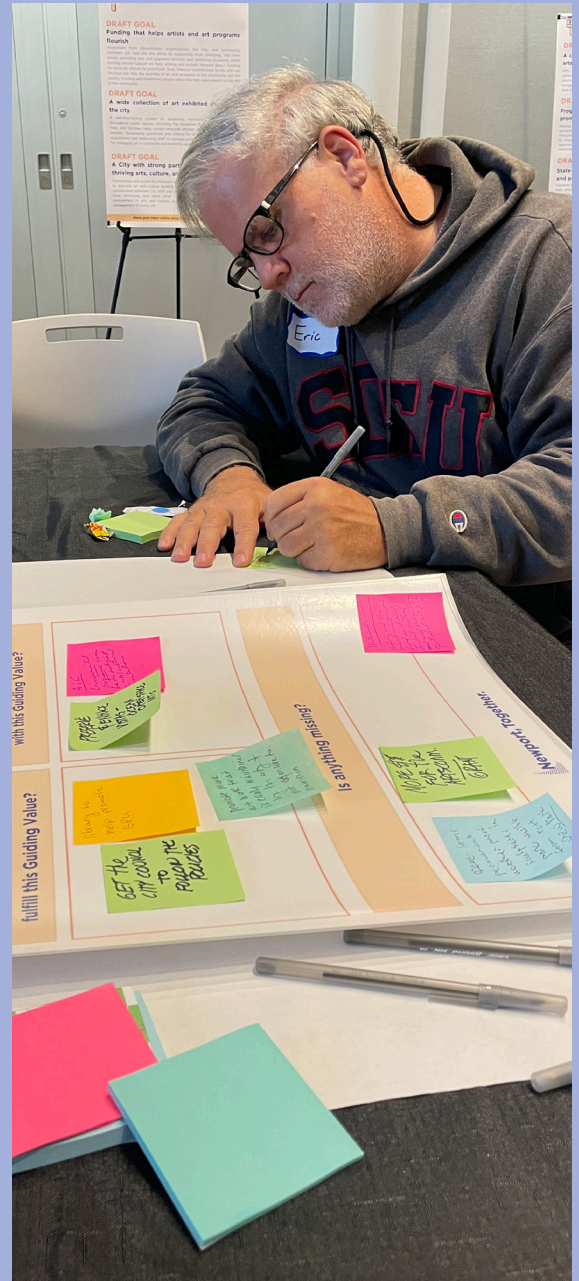
► **Secure Funding, Donations, and Sponsorship:** Pursue transient occupancy tax allocations, grants, and sponsorships for arts and cultural programs; ensure the City budget includes financial support for the arts and robust museum development.

► **Infrastructure and Accessibility:** Design spaces for older adults and people with mobility challenges, ensuring ADA compliance in public venues; maximize existing venues for cultural events; provide shuttles to events.

► **Technology and Innovation:** Enhance cultural presentations with modern technology; use technology to provide efficient access to historical documents; expand the Newport Beach app.

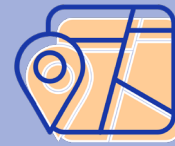
► **Community Livability and Charm:** Preserve Newport Beach’s charm and village-like character by maintaining historic cottages and aesthetic designs; add activities connected to the beach, open spaces, gardens, and recreational events.

► **Community Programs and Collaboration:** Expand arts and culture programming, such as at the library; celebrate local artists and facilitate local artistic recognition citywide.



*Arts & Culture and Historical Resources participants review draft guiding values and brainstorm ideas.*

# KEY THEMES



- ▶ **Transportation and Accessibility:** Add a tram or monorail system for moving people from parking lots; separate bike paths to alleviate congestion on boardwalks; add solar-powered EV chargers around the city; improve connectivity using technology.
- ▶ **Infrastructure and Urban Development:** Upgrade aging infrastructure, such as seawalls; include bike and pedestrian paths in new development; add crosswalks with lights around the city, especially on major roads such as Pacific Coast Highway; invest in safety infrastructure for biking, walking, and swimming; have clear communication between the City and commissions.
- ▶ **Environmental Preservation and Leadership:** Consider natural options for beach and environmental protections, such as creating natural dunes and sand replenishment; enforce regulations for water quality and dumping prevention for all boat users; promote wildlife preservation and integration into urban planning.
- ▶ **Harbor and Waterfront Management:** Increase public access to docks and waterfront space, such as affordable boating; enforce boating sanitation and safety regulations; make harbor infrastructure improvements, including mooring preservation.
- ▶ **Public Health and Technology Infrastructure:** Consider potential health impacts and adopt mitigations; establish communication infrastructure for emergencies.
- ▶ **Historic and Cultural Preservation:** Protect historical and culturally significant sites; preserve waterfront clubs, moorings, and other landmarks around the harbor; and add site-specific historical interpretive signage.
- ▶ **Tourism and Recreational Opportunities:** Regulate tourism to mitigate environmental impacts; develop recreational amenities like public museums and fishing docks; consider small businesses in tourism development plans.



*Land Use & Harbor, Bay, and Beaches participants review draft guiding values and brainstorm ideas.*

Finally, during each workshop, draft goals or ideas for the workshop topics were placed around the meeting room. Participants were given six green sticky dots and sticky notes. They were invited to read the draft goals, indicate which goals resonated with them using the green dots, and provide any additional comments or ideas in writing using the sticky notes. The complete list of draft goals for each General Plan Element or topic can be found in Appendix C.



*Participant discussing draft goals with one of the workshop facilitators.*

### Participant Input

The following lists indicate goals for each General Plan Element with the respective number of sticky dots received, listed in priority order.



## NATURAL RESOURCES

- ▶ Clean water in Newport Bay and the coast ● ● ● ● ●
- ▶ Ecosystems that are connected and sustainable ● ● ● ● ●
- ▶ Ecosystems that are conserved and restored ● ● ●
- ▶ Viewsheds and corridors that are preserved ● ● ●
- ▶ A city with clean air that prevents air pollution ● ●
- ▶ Water that is conserved and used responsibly ● ●
- ▶ A city with minimal impacts from oil and gas drilling activities ●
- ▶ A city that leverages alternative sources of energy ●

## RECREATION

- ▶ Open space, park, and recreation facilities that are preserved, upgraded, and well-maintained ● ● ● ● ●
- ▶ A community with high-quality recreation programs ● ● ●
- ▶ Adequate support facilities in open space and recreation facilities ● ● ●
- ▶ A city that protects public beach access ● ●
- ▶ Parks and recreation facilities that are adapted to meet a variety of needs for existing and future residents, including people with disabilities ●
- ▶ New parks and connections that increase resident access to recreation, parks, and open space opportunities ●
- ▶ A city with established and maintained relationships to facilitate interagency and inter-organizational coordination

## LAND USE

- ▶ Distinct neighborhoods and villages that accommodate planned development while maintaining their unique character ● ● ● ● ●
- ▶ Mixed-use districts are designed and planned to ensure compatibility among a variety of uses ● ● ● ● ●
- ▶ Efficient use of land to create livable neighborhoods and support economic development ● ● ● ● ●
- ▶ Public and institutional uses that enhance the quality of life for residents and are located and designed to complement Newport Beach's neighborhoods ● ● ● ● ●
- ▶ A prompt and efficient system for development permit processing ● ● ●
- ▶ Industrial districts that provide flexibility to incorporate community-serving uses and encourage transition to co-locate employment, residential, and creative and artistic uses ● ●
- ▶ Commercial districts and centers are well-planned and exhibit a high level of architectural and landscape quality ● ●
- ▶ Residential neighborhoods that are well-designed and contribute to the livability and quality of life of residents ● ●
- ▶ Office and business parks exhibit a high-quality image, are attractive and provide quality working environments for employees and services for the community ● ●
- ▶ Infrastructure that supports new development, maintains and improves existing development, and is adaptable to new technologies ● ●
- ▶ Planning sub-areas that accommodate planned housing development in a cohesive manner ●

## HISTORICAL RESOURCES

- ▶ A city that celebrates, preserves, and protects its history ● ● ● ● ●
- ▶ A city that enshrines its history through education ● ● ● ● ●
- ▶ A city and community that celebrates tribal cultural resources ● ●
- ▶ Well-documented and protected archaeological and paleontological resources ●

## **SAFETY**

- ▶ A community where residents, employees, and visitors feel a sense of comfort and safety ● ●
- ▶ Evacuation routes and centers that are maintained to provide functionality during hazardous conditions ● ●
- ▶ Tested and effective communication systems for emergency preparedness and response ● ●
- ▶ High-quality public safety, emergency preparedness, and response services ● ●
- ▶ Reduced and well-managed urban and wildland fire hazards ●
- ▶ A community that is resilient to and protected from inland flooding ●
- ▶ A community protected from airport-related hazards
- ▶ A built environment adapted to provide relief from extreme heat
- ▶ Building and utilities that are protected from seismic and geological hazards
- ▶ A community protected from impacts of hazardous materials

## **ARTS & CULTURE**

- ▶ Funding that helps artists and art programs flourish ● ● ● ● ● ● ● ●
- ▶ State-of-the-art facilities to host art exhibits and programs ● ● ● ● ● ●
- ▶ A city with strong partnerships that support thriving arts, culture, and education ● ● ● ● ● ●
- ▶ Programs and exhibits within the city are widely promoted, marketed, and attended ● ● ● ● ● ●
- ▶ A wide collection of art exhibited throughout the city ● ● ● ●
- ▶ A community enriched by and connected to the arts, culture, libraries, and education ● ●

## **COASTAL RESILIENCE**

- ▶ Beaches that are maintained and protected from erosion ● ● ● ●
- ▶ A community protected from floods through adequate and well-maintained infrastructure ● ●
- ▶ A community that is resilient to coastal flooding ● ●
- ▶ Stabilized bluffs to minimize erosion and prevent landslides in developed areas ●
- ▶ Current and accessible data and information on flooding, beach erosion, and bluff erosion ●

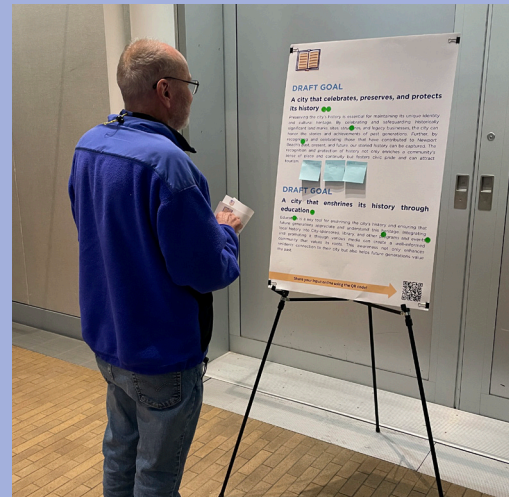
## **HARBOR, BAY & BEACHES**

- ▶ A healthy coastal ecosystem ● ● ● ● ● ● ● ● ● ● ● ● ● ● ● ●
- ▶ A harbor, bay, and beaches that attract tourism and maintain the character of the coastal neighborhoods ● ● ● ● ● ● ● ● ● ● ● ● ● ● ● ●
- ▶ Coastal resources that are easily accessed and rich with recreational opportunities ● ● ● ● ● ● ● ● ● ● ● ● ● ● ● ●
- ▶ High-quality beaches that are enjoyed by residents and visitors ● ● ● ● ● ● ● ● ● ● ● ● ● ● ● ●
- ▶ Preserved coastal-dependent uses that contribute to the charm and character of the harbor, bay, and beaches ● ● ● ● ● ● ● ● ● ● ● ● ● ● ● ●
- ▶ Well-managed and economically productive harbor, bay, and beaches ● ● ● ● ● ● ● ● ● ● ● ● ● ● ● ●
- ▶ Waterfront businesses and services that contribute to a successful harbor and bay ● ● ● ● ● ● ● ● ● ● ● ● ● ● ● ●



# KEY THEMES

In addition to adding green sticky dots to the goals, participants brainstormed ideas with each other and the project team and added written comments using sticky notes on goal posters. Key themes identified from participant input are listed below, under their respective workshop topic, with no regard to priority. See Appendix D for the complete written comments.



*Workshop participant reviewing draft goals and adding comments.*

## Recreation & Natural Resources

- ▶ **Prioritize Resource Conservation and Preservation:** Fresh water is a limited resource and should be preserved; viewsheds should be preserved.
- ▶ **Protecting and Maintaining Open Spaces for Future Generations:** Explore options for sand retention, create environmentally friendly parks, and incorporate native landscaping.
- ▶ **Focus on what the City of Newport Beach Can Affect:** Some of these goals are on a federal or state level; identify what can be done at a local level.

## Arts & Culture and Historical Resources

- ▶ **Funding and Sponsorship for Arts and History:** Dedicate City funding and staff to pursue additional funding sources; include creative approaches to secure funding and create impactful initiatives.
- ▶ **Arts and Cultural Development:** Encourage public art projects, including murals, sculptures, and creative designs on local infrastructure; create sustainable cultural initiatives; strive to make the city more visually engaging.
- ▶ **Preservation of Historical Resources:** Focus on preserving historical trees, gardens, and oral histories; acquire funding for historical resources and landmarks and emphasizing Newport Beach's unique history.
- ▶ **Promote Stewardship and Appreciation of Arts and Historical Resources:** Emphasize understanding, awareness, and community engagement in preserving the city's heritage.

## Land Use & Harbor, Bay and Beaches

- ▶ **Marine Wildlife Protection:** Show concern for the well-being of sea animals, including pelicans, ducks, birds, and fish.
- ▶ **Water Quality and Marine Ecosystem Health:** Continue to clean the bay water; cleaner water has already had a positive effect on fish presence.
- ▶ **Affordable Access to Waterways:** Ensure the bay and beaches are accessible to the public; keep the harbor and moorings affordable for all community members.

## Coastal Resilience & Safety

No comments were added.



*Workshop participants review maps of housing overlay sites and sub-areas.*

## Land Use Activity

A fourth activity was added during the final workshop on Land Use & Harbor, Bay, and Beaches. Participants were asked to review four maps identifying the housing overlay sites and names of community subareas: Airport Area, Newport Center, West Newport Mesa/Banning Ranch/Cannery McFadden, and Coyote Canyon. They were asked to identify what they envision will be needed to accommodate future housing in each subarea to ensure the communities are safe, balanced, and healthy.

During the activity, participants were asked to consider two viewpoints: one as if they were living in one of these areas and one through the perspective of another potential Newport Beach resident, such as a young family or a retired couple. Participants brainstormed ideas with each other and the project team and added written comments using sticky notes on the maps. All written comments provided during the activity can be found in Appendix E.

# KEY THEMES

Below are the key themes identified from participant input for each subarea. Some themes may be relevant to the surrounding areas of each map, and not specific to the identified subarea. The themes are organized under their respective subarea, with no regard to priority.

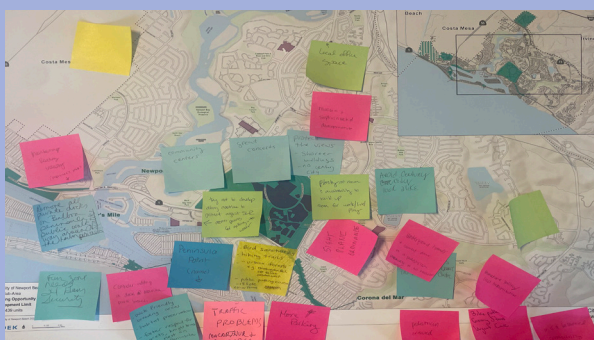
## Airport Area

- **Urban Planning, Development, and Infrastructure:** Transform the Airport Area to “Uptown Newport” with mixed-use spaces, including residential, retail, and office areas; create balanced parking solutions and pedestrian-friendly walkways to support a central public space; consider incentives for the business and property owners in the area for alternative development.
- **Community Amenities and Services:** Prioritize essential amenities like grocery stores, daycare, schools, and community centers; add on-site parks and walkable retail options to enhance the quality of life for residents.
- **Transportation and Connectivity:** Provide options for car-independent connectivity through trolleys, shuttles, and enhanced biking, walking, and scooter paths; enhance transportation infrastructure to alleviate congestion and encourage eco-friendly mobility; add connections to other areas of the city, such as to the fairgrounds from the Back Bay.
- **Environmental and Wildlife Conservation:** Integrate environmental considerations into urban planning, ensuring sustainable development; preserve buffer zones to protect the bay and open spaces.



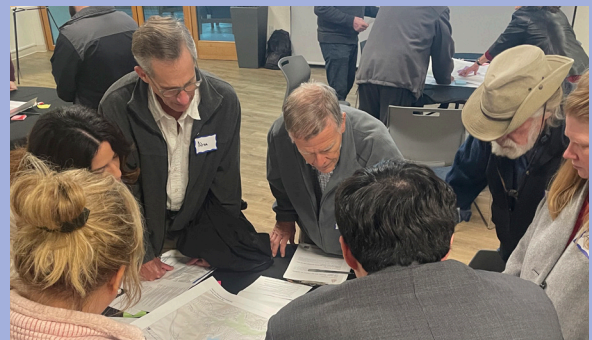
## Newport Center

- **Community and Recreation Enhancements:** Develop public spaces like a community center; encourage recreational activities through facilities like hiking trails, bike paths, and miniature trolleys/local transportation; update the peninsula Fun Zone with 24-hour security.
- **Wildlife Education and Conservation:** Prioritize habitat preservation; provide education to the public about the local wildlife, such as egrets and herons; consider urban forestry initiatives and animal sanctuaries around the area.
- **Urban Development and Infrastructure:** Balance modern development and a pedestrian-oriented, walk/live/play, village-like character of the city; limit building heights; research pedestrian tunnels for major intersections.
- **Accessibility, Inclusivity, and Connectivity:** Increase parking and public transportation options, including trolleys and pedestrian paths; ensure community-friendly and affordable docks at Marina Park.



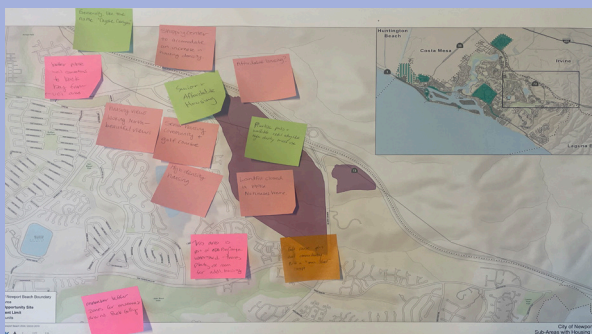
## West Newport Mesa/Banning Ranch/Cannery McFadden

- ▶ **Accessible Housing and Development Considerations:** Emphasize workforce housing, particularly for Hoag employees and senior citizens; limit building heights; consider mixed-use housing developments with retail, restaurants, and stores on the first floor.
- ▶ **Environmental and Open Space Preservation:** Preserve the harbor and boating industries, ensuring full harbor access and protecting Upper Bay areas; protect open spaces along the waterfront walkways, maintain parks, and add walking/biking paths.
- ▶ **Community Connectivity and Safety:** Expand safety measures through streetscapes, pedestrian pathways, and street lighting; increase connectivity options between West Newport, the Peninsula, and the Coast Highway.
- ▶ **Infrastructure and Public Amenities:** Move utility infrastructure underground in Newport Heights and West Cliff Drive; prioritize community amenities and gathering places, such as a community pool, pickleball courts, restaurants, and coffee shops; improve bike lanes and parking.



## Coyote Canyon

- ▶ **Name Recognition:** Residents like and recognize “Coyote Canyon.”
- ▶ **Affordable and Accessible Housing Opportunities:** Emphasize affordable housing options, especially for senior citizens and young families; consider new housing with views; include environmental buffer zones when designing, such as the Big Canyon Watershed.
- ▶ **Connectivity and Environmental Considerations:** Improve public trail connectivity around the area and other parts of the city; consider alternative transportation trails and paths to the local universities; consider the environmental impact of development near the landfill site and other sensitive areas.
- ▶ **Community Amenities and Urban Design:** Incorporate parks, walkable retail, and mixed-use spaces alongside housing; consider a “main street” concept to foster community and accessibility in the new housing developments.





# Appendices

<b>A   Draft Vision Statement and Guiding Values</b>	<b>26</b>
<b>B   Draft Guiding Values Activity</b>	<b>27</b>
<b>C   Draft Ideas to Support the Elements</b>	<b>42</b>
<b>D   Draft Goals Participant Input</b>	<b>52</b>
<b>E   Housing Overlay Sites &amp; Community Sub-Area Map</b>	<b>53</b>



**Newport,  
Together.**

# DRAFT VISION STATEMENT AND GUIDING VALUES

In the year 2050, Newport Beach is renowned as a coastal beacon of natural splendor, unparalleled amenities, and dynamic culture. The City maintains a superior quality of life by successfully balancing the needs of residents, businesses, and visitors. Newport Beach is a distinguished city adorned with unique villages, coastal resources, and natural open spaces; creating a unique sense of place in an idyllic setting. A destination for many, Newport Beach offers a sophisticated lifestyle with access to luxury amenities and activities. The City's commitment to the protection of the natural environment has made Newport Beach a leader of environmental stewardship in the region. Strong partnerships with outside agencies and organizations have cultivated successful collaboration on regional transportation, land use, coastline, and other issues of mutual concern. The sweeping views of and access to beaches, the harbor, and the coast have been preserved and are maintained for future generations.

Growth and development have been accommodated in a manner that seamlessly blends new and old into the fabric of the community, keeping pace with changing community needs while maintaining adequate infrastructure and a high quality of life. The needs of the community are met through a variety of strategically located uses including vibrant commercial services, offices and employment centers, public facilities including community centers and libraries, parks and open space, schools, residential neighborhoods, and visitor-serving uses. Strategic planning and infrastructure investments continue to protect the health and longevity of the built and natural environment. Adaptation and resilience are central to all decision-making and have empowered Newport Beach to maintain a vibrant coastal lifestyle that strengthens the local economy. The City's world-class public safety services safeguard its residents and visitors, creating safe and friendly neighborhoods. Residents champion arts, culture, and education as pillars of the community and take pride in their historic legacy. The community embraces innovation, and their visionary outlook has positioned them as frontrunners in best practices for adopting new technologies. Newport Beach is distinguished for its beauty, culture, resilience, and inclusivity for residents of all stages of life and backgrounds.

## Guiding Values

**Maintain a Balanced and Connected Community:** Conservative and balanced growth that emphasizes residents' quality of life and connects community members to their needs, creating a city that is functional and vibrant.

**Foster Environmental Stewardship:** Environmental stewardship supports the preservation and enhancement of the natural environment, so that it may be enjoyed by current and future generations.

**Promote Coastal Resilience:** Resilience is essential to adapting to environmental changes and protecting the built and natural environment.

**Facilitate Public Safety:** Community safety is fostered through public education, infrastructure investments, and sufficient public services.

**Embrace Innovative Technologies:** Innovative technologies benefit cities when they are planned for and thoughtfully integrated into City decisions, regulations, and development.

**Celebrate Art, Culture, and History:** Culture, art, and history make up the tapestry that bonds the community together and creates a sense of civic pride.

**Administer Financial Resources Responsibly:** Fiscal responsibility supports an efficient use of resources to help maintain economic stability and prosperity within a community.

## APPENDIX B

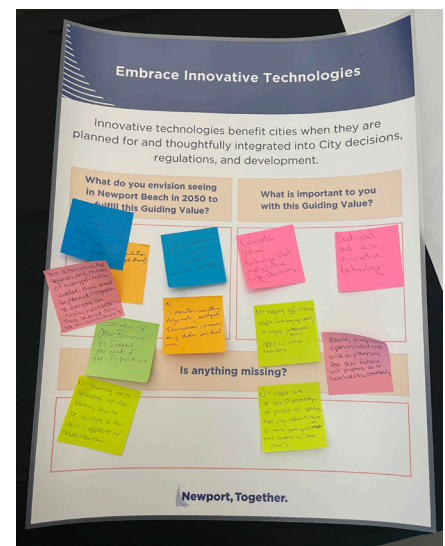
# DRAFT GUIDING VALUES ACTIVITY

The complete written comments, edited lightly for clarity, from each workshop can be found below. In addition, photos of each poster accompany the written comments.

## Workshop 1: Recreation and Natural Resources

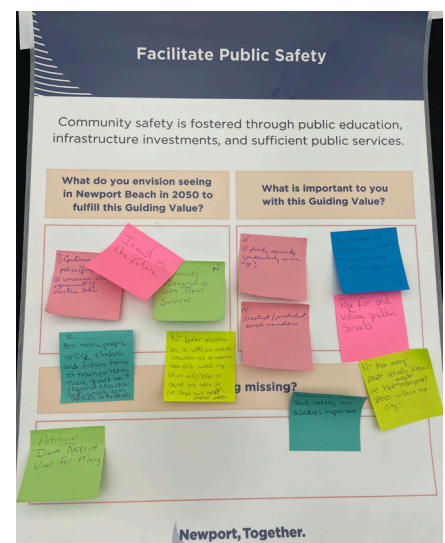
### Embrace Innovative Technologies

- ▶ Educate, value, and technology that make/drive City decisions
- ▶ Seek out and use innovative technology
- ▶ Help all different people (multi-language capacity) to engage and learn about our natural resources
- ▶ Being progressive, open-minded, and wise in planning for our future will prepare us to have a healthy community
- ▶ Make sure to look at the accessibility of private recreational opportunities that city residents have, i.e., tennis, pools, and gyms at HOA compared to other cities
- ▶ Balancing the use of technology but also learning how to be low-tech to slow down and appreciate our natural resources
- ▶ Educational & other resources to support the needs of the population
- ▶ Phase out natural gas and fuel boats. Go to electric models
- ▶ More connection to senior center (shuttle?)
- ▶ As alternative fuel sources and modes of transportation evolve, there should be planned integration so everyone can easily navigate. There should also be an overarching plan to upgrade the infrastructure.
- ▶ Monitor coastline hazards, earthquakes, tsunamis, erosion, high tides, and sea level rise
- ▶ Newport Beach has an aging population - keep it simple



### Facilitate Public Safety

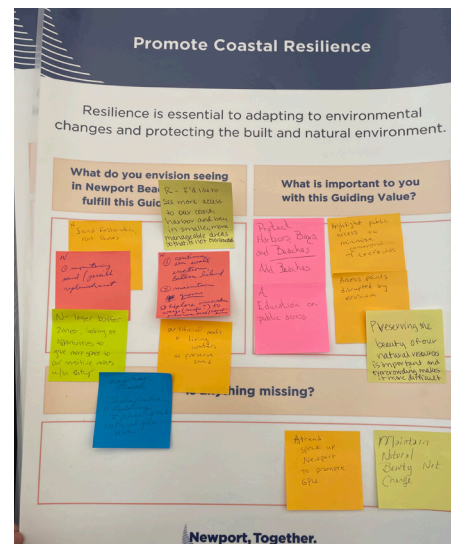
- ▶ As more e-bikes are utilized as future forms of transportation, education and licensing should be required upon vehicle purchase.
- ▶ Better education as to WHY our natural resources are essential so folks won't fly by on an e-bike, cause side trails, or create illegal trails through protected areas
- ▶ Artificial dunes restrict views for many
- ▶ Invest in the future
- ▶ Community partnership with public services
- ▶ Family security (particularly as the community ages)
- ▶ Pay for and value public servants
- ▶ Be mindful of parking not leading to overcrowding near/at beaches
- ▶ Restrict/prohibit beach vendors
- ▶ Continue with police/fire/lifeguard support
- ▶ Concerns about the enforcement of electric bikes





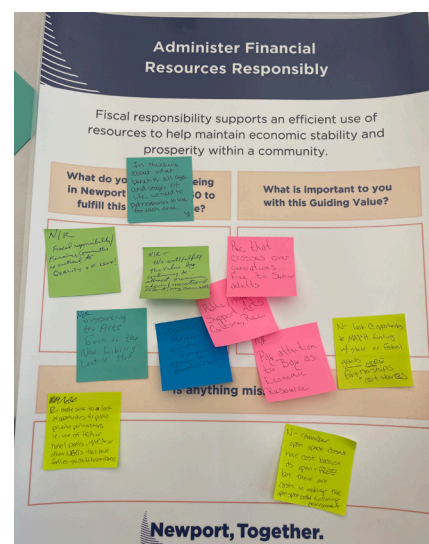
## Promote Coastal Resilience

- ▶ Protect harbor, bays, and beaches - add “beaches” to the element name
- ▶ An education on public access
- ▶ Highlight public access to minimize the concentration of crowds
- ▶ Access points disrupted by erosion
- ▶ Preserving the beauty of our natural resources is essential, and overcrowding makes it more difficult
- ▶ Artificial reefs and living waters to preserve sand
- ▶ I’d like to see more access to our coast, harbor, and bay in smaller, more manageable areas so that it is not overcrowded
- ▶ Continue sea wall implementation
- ▶ Protect Balboa Island
- ▶ Sand restoration, not dunes
- ▶ Explore retention ways to preserve sand and coastline (reefs)
- ▶ Larger buffer zones, looking at opportunities to give more space to sensitive areas
- ▶ Monitoring sand replenishment
- ▶ Attend Speak Up Newport to Promote GPU [General Plan Update]
- ▶ Maintain natural beauty, don’t change
- ▶ Maintain beaches
- ▶ Electrification of buildings and phasing out natural gases



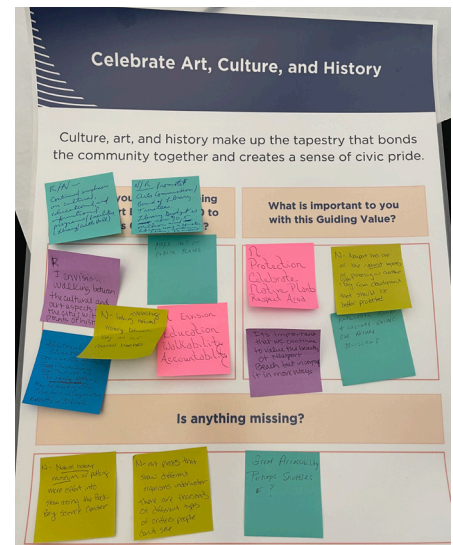
## Administer Financial Resources Responsibly

- ▶ Remember, open space doesn’t have cost because it’s open and free, but there are costs to making the open space function and operate
- ▶ Make sure to look at opportunities for public-private partnerships, i.e., use of HOA or hotel pools or YMCA or others that have facilities
- ▶ Recreation that crosses over generations free to senior adults
- ▶ Public/private support, arts and culture
- ▶ Pay attention to the bay as an economic resource
- ▶ Supporting the arts, such as the new library lecture hall
- ▶ Continue to attract premium admin operational talent; pay well
- ▶ Fiscal responsibility/financial committee is critical to quality of life
- ▶ In thinking about what benefits all ages and stages of life, we need to put resources for each area
- ▶ Monitor the progress of efforts to maintain and prevent beach erosion



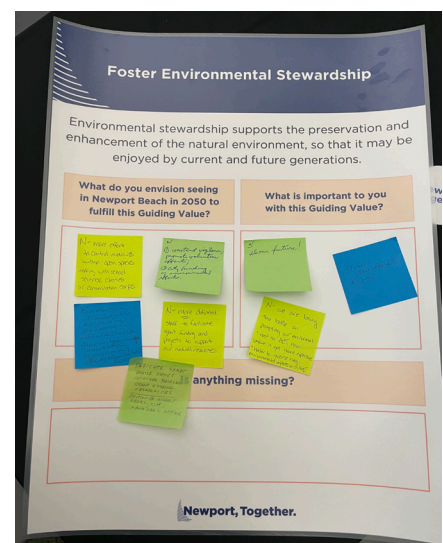
## Celebrate Art, Culture, and History

- ▶ Natural history museum or putting more effort into showcasing the Back Bay Science Center
- ▶ Art pieces that show different organisms underwater. There are thousands of different types of critters people can't see
- ▶ Greater accessibility - perhaps shuttles
- ▶ Values: Protection, celebrate native plants, respect area
- ▶ Newport has one of the richest legacies of protecting our coastline and upper bay from development that should be better protected
- ▶ It is essential that we continue to value the beauty of Newport Beach but incorporate it in more ways
- ▶ Knowledge, history, and culture guide our future decisions
- ▶ More art in public places
- ▶ Linking and celebrating natural history between our bay and our coastal beaches
- ▶ Envision, education, walkability, accountability
- ▶ I envision walking between the cultural and art aspects around the city, with points of history
- ▶ Continued emphasis on cultural, educational, and informational programs and facilities (library and Witte Hall)
- ▶ Promote arts commission/boards of library trustees; Library budget is now \$10.5 million, and the library was a 4-star; continue to support
- ▶ Additional education of community history



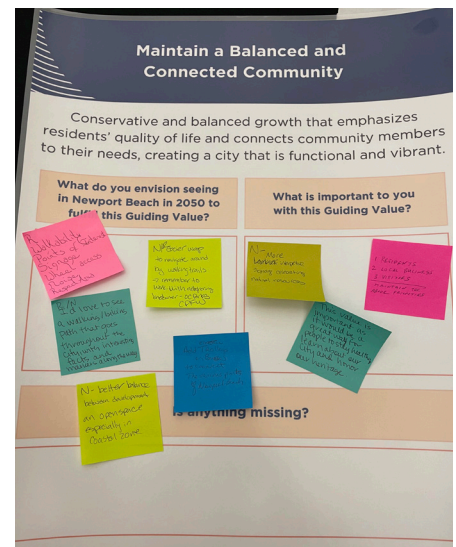
## Foster Environmental Stewardship

- ▶ More effort to control initiatives within open spaces, working with school science classes and conservation corps
- ▶ More dedicated staff to facilitate grant funding and projects to support our natural resources
- ▶ Continued vigilance, promote volunteer efforts
- ▶ City funding of environmental efforts
- ▶ Residents should be knowledgeable and active in preserving our natural resources and beaches and avoiding sea level rise
- ▶ Dedicated staff whose priorities include grant and funding opportunities
- ▶ It's our future!
- ▶ Slow sea-level rise
- ▶ We are losing the battle to protect our environment. We need to ACT now before it gets more expensive and more complicated to reverse



## Maintain a Balanced and Connected Community

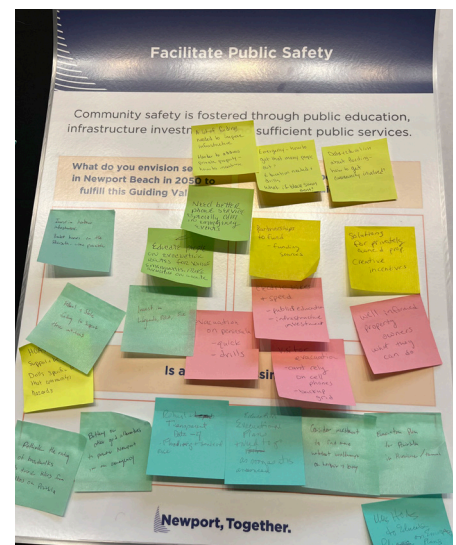
- ▶ Walkability to points of interest, signage, wheel access
- ▶ Easier ways to navigate by walking trails - remember to work with neighboring landowners
- ▶ I'd love to see a walking/biking path that goes throughout the city, with interesting facts and markers along the way
- ▶ Better balance between development and open space, especially in the coastal zone
- ▶ Add trolleys or buses to connect the various parts of Newport Beach
- ▶ More interpretive signage celebrating natural resources
- ▶ Maintaining priorities: residents, local businesses, visitors
- ▶ This value is essential as it would be an excellent way for people to stay healthy, learn about our city, and honor our heritage



## Workshop 2: Coastal Resilience and Safety

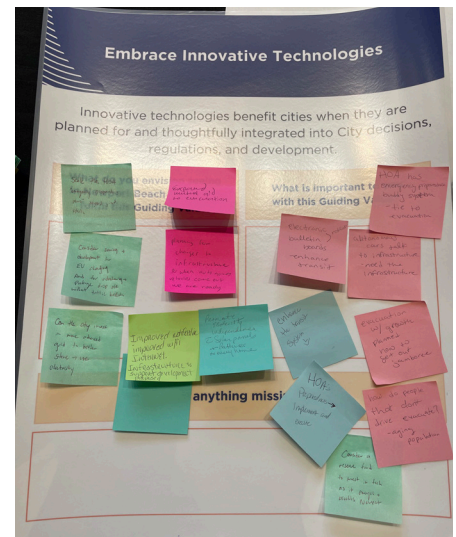
### Facilitate Public Safety

- ▶ Invest in harbor infrastructure
- ▶ Protect houses on the Peninsula, where possible
- ▶ Invest in lifeguards, fire, police
- ▶ Education for people on evacuation routes for various emergencies, make available on the City website
- ▶ Need better phone service, especially in Corona del Mar during emergency events
- ▶ Much funding is needed to improve infrastructure
- ▶ During an emergency, how can people escape a specific area? Possibility of drills?
- ▶ Harder to address private property - how to incentive
- ▶ Data and education about flooding - get the community involved
- ▶ Partnerships to fund projects
- ▶ Well-informed property owners
- ▶ Electric bikes and speed: education and infrastructure investments
- ▶ Visitor evacuation routes and education
- ▶ HOAs educating their community
- ▶ Robust, transparent data
- ▶ Battery backups/grid alternatives



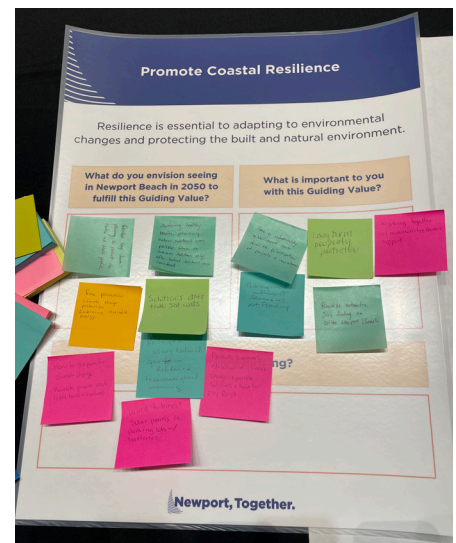
## Embrace Innovative Technologies

- ▶ Scaled HOA emergency preparedness
- ▶ Consider using zoning and development for EV charging, ridesharing, parking (especially at the beaches)
- ▶ Plan for infrastructure changes - autonomous vehicles
- ▶ Expanded aid during evacuation
- ▶ HOAs have a buddy system tied to emergency preparedness
- ▶ Electronic bulletin boards for notifications
- ▶ Enhanced transit
- ▶ How do you evacuate if you don't have a vehicle?
- ▶ Consider reserve funding to invest in technology as it comes to Newport



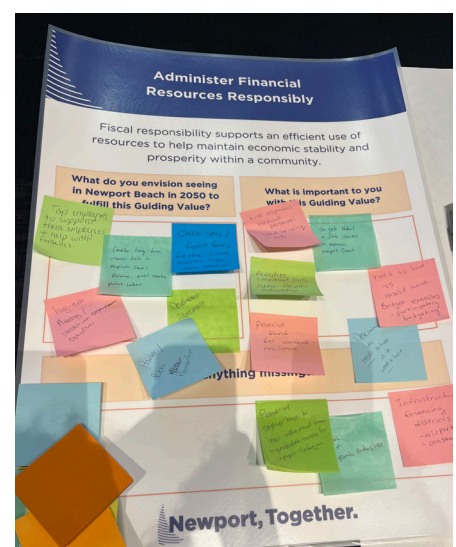
## Promote Coastal Resilience

- ▶ Maintaining healthy beaches and prioritizing natural solutions where possible. Phase to “armored” solutions only after natural solutions are considered
- ▶ Sea level rise solutions other than a seawall
- ▶ Fire prevention, climate change protection
- ▶ Embracing renewable energy
- ▶ No longer using natural gas in residences to reverse global warming
- ▶ Develop long-term planning to protect the harbor and beach profile
- ▶ Long-term property protection
- ▶ Working together with community/council support
- ▶ Prioritize state/federal funding to better Newport Beach
- ▶ Goal: Homes on Newport Shores do not flood
- ▶ Wind turbines solar panels in parking lots with batteries/storage
- ▶ How to prepare for climate change
- ▶ Promote green energy, both built and natural
- ▶ Promote community education regarding climate change and possible solutions and how to pay for it



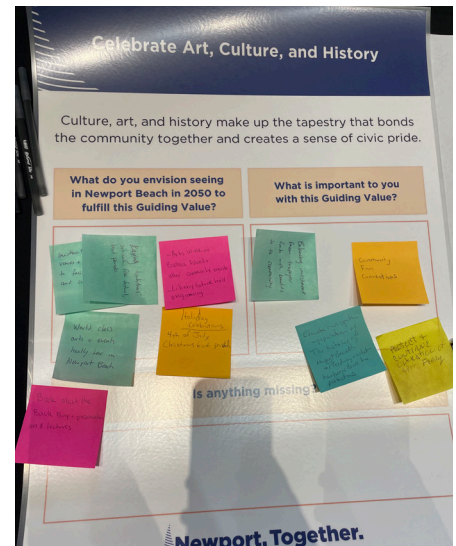
## Administer Financial Resources Responsibly

- ▶ Tap employers to support their employees and help with financials
- ▶ Consider long-term reserved funds to empower coastal resilience, protect beaches, and protect the harbor
- ▶ Stretched out expenditures
- ▶ Private/public partnerships
- ▶ State and federal funding
- ▶ Housing for first responders in Newport Beach
- ▶ Prioritize important items
- ▶ Reserve funds for coastal resilience
- ▶ Determine the “needs” to have vs the “want” to have
- ▶ Infrastructure financing districts - airport, coastal, PCH, marinas, Peninsula



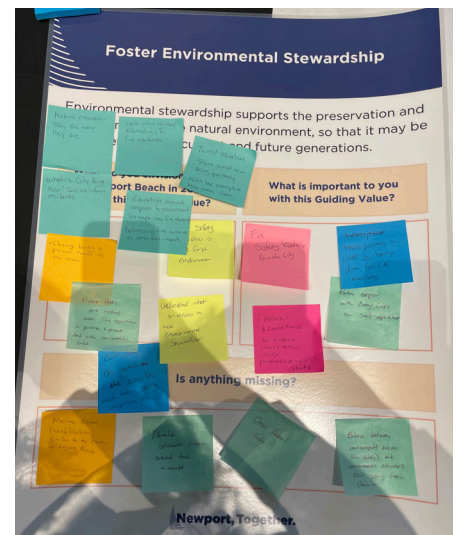
## Celebrate Art, Culture, and History

- ▶ Values: Community, fun, connections
- ▶ Protected and continued operation of the Balboa Island ferry
- ▶ Educate our youth and population on the history of Newport Beach, flooding risks, and what has been done to protect us
- ▶ Balance investments from taxpayer funds with benefits to the community
- ▶ Art walk on Balboa Island and other community events
- ▶ Library lecture hall programming
- ▶ Holiday Celebrations - 4th of July and Christmas Boat Parade
- ▶ World-class arts and events locally in Newport Beach
- ▶ Keeping traditions: Art walk, film festival, boat parade
- ▶ Investment in venues and lectures to facilitate events and cultural shows
- ▶ Book about the Back Bay and presentations and lectures



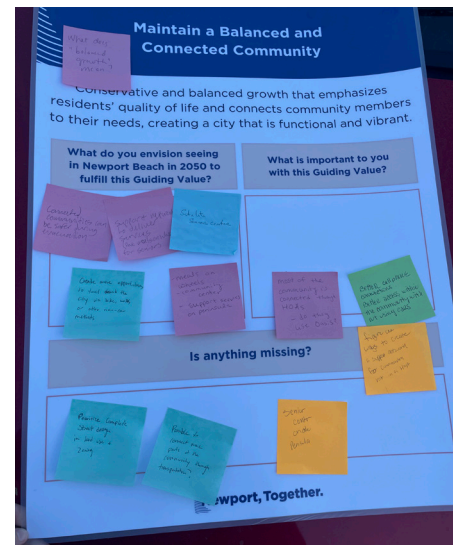
## Foster Environmental Stewardship

- ▶ Natural resources - stay the way they are
- ▶ Seek other sources/alternatives for fire retardants
- ▶ Tourist education: share what the City is doing positively
- ▶ Hotel tax example to keep areas clean
- ▶ Inform residents what the City is doing now
- ▶ Clearing beaches to prevent runoff into the ocean
- ▶ Protect parks and natural land. Find opportunities to purchase and protect land with environmental value
- ▶ Education around impacts on the environment (i.e., fires)
- ▶ Balance fire concerns with other environmental concerns
- ▶ Fire safety from City leadership
- ▶ Federal and state funds to address conservation issues - Partnerships with state
- ▶ Transparency about what is being done for coastal resilience measures
- ▶ Partner with the Army Corps on sand retention
- ▶ Educate upstream cities about trash and runoff
- ▶ Marine animal rehabilitation sim[ilar] to the center in Laguna Beach



## Maintain a Balanced and Connected Community

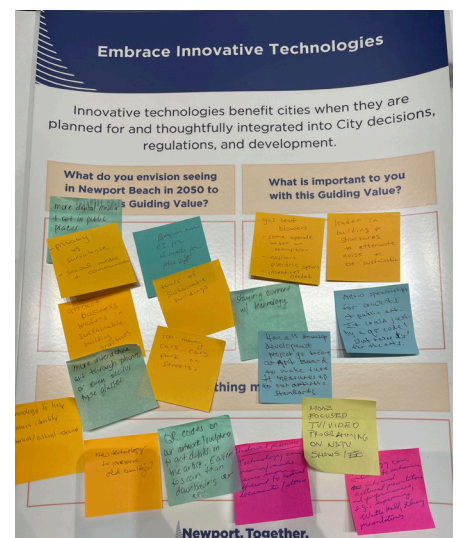
- ▶ What does “Balanced Growth” mean?
- ▶ Connected communities can be safer during evacuation
- ▶ Support Newport Beach in delivering services for seniors
- ▶ Satellite OASIS office in the Peninsula
- ▶ Create more opportunities to travel around the city via bike, walking, or other non-car methods
- ▶ Meals on Wheels
- ▶ Community center
- ▶ Support services on the Peninsula
- ▶ Most of the community is connected through HOAs
- ▶ Better cellphone connections
- ▶ Better access within the community without using cars
- ▶ Prioritize complete street design in land use and zoning



## Workshop 3: Arts and Culture & Historical Resources

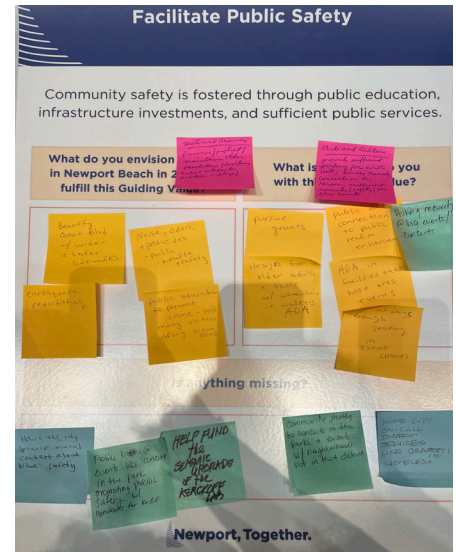
### Embrace Innovative Technologies

- ▶ More digital media and art in public places
- ▶ Gas leaf blowers: Some operate under an exemption; explore electric options; incentives needed
- ▶ Technology to help planners identify historical/cultural resources
- ▶ Privacy vs surveillance leader in building and structures to attenuate noise and be sustainable
- ▶ New technology to preserve old buildings
- ▶ Social media and communication strategies
- ▶ Staying current with technology
- ▶ QR codes on our artwork/sculptures to get details on the art/artist. It is more straightforward to scan than download via websites
- ▶ Attract business leaders in sustainable building practices
- ▶ Have all development projects go before the arts board/commission to make sure they align with artistic standards
- ▶ More focused TV/video programming on NBTV Shows
- ▶ More interactive art through phones or even Oculus-type glasses
- ▶ Allow sponsorship for concerts and public art. It could be a QR code but advertise for the arts
- ▶ Technology can preserve. Make access more efficient to historical documents or stories
- ▶ Too many cars - cars park on streets
- ▶ Technology can continue to enhance arts and cultural presentations and performances, i.e., Witte Hall
- ▶ Tours of sustainable buildings
- ▶ Bring in more AI for all aspects of the police



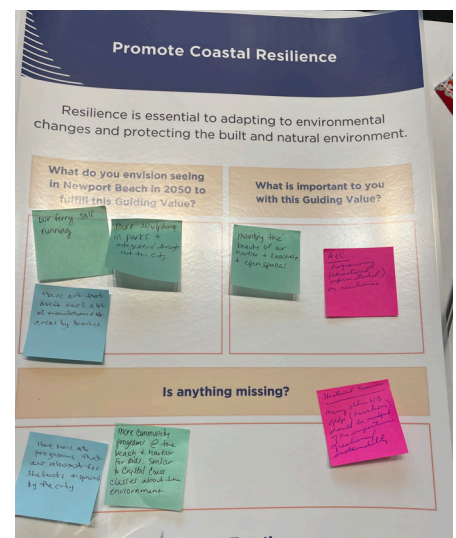
## Facilitate Public Safety

- ▶ Beautify Ocean Blvd with wider and safer sidewalks
- ▶ Pursue grants
- ▶ Have the City sponsor a mural contest about bikes and safety
- ▶ Noise, odors, and pesticides - public health and safety design for older adults and those with wheelchairs and walkers (ADA) police booths at events like Concerts in the Park; promoting public safety with handouts for kids
- ▶ Earthquake retrofitting
- ▶ Public art connection to the public realm
- ▶ Help fund the seismic upgrade of the Kerckhoff Lab
- ▶ Public education to prevent crime - too many visitors along Ocean Blvd.
- ▶ Community shuttles to Concerts in the Park and events with neighborhoods not in that district
- ▶ ADA in facilities that host arts events
- ▶ More City on-call direct services, i.e., for the unhoused
- ▶ Having reoccurring significant events/concerts
- ▶ Always enough seating in event spaces
- ▶ Preserve, protect, and maintain older facilities
- ▶ Provide sufficient parking for Witte Hall, Sunday Musicales, Concerts on the Green + sufficient security for these events



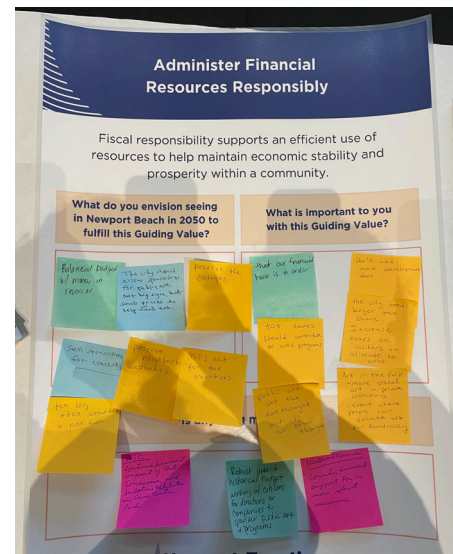
## Promote Coastal Resilience

- ▶ Keep the Balboa Ferry running
- ▶ Maintaining the beauty of our harbor, beaches, and open spaces
- ▶ Have more art programs that are relevant for students and sponsored by the City
- ▶ More sculptures in parks and integrated throughout the City
- ▶ Programming (educational) on resilience
- ▶ More community programs at the beach and harbor for kids.
- ▶ Similar to Crystal Cove's classes about the environment
- ▶ Have art that doesn't need much maintenance at the beaches
- ▶ Many older Newport Beach residents should be mindful of the importance of resilience and sustainability



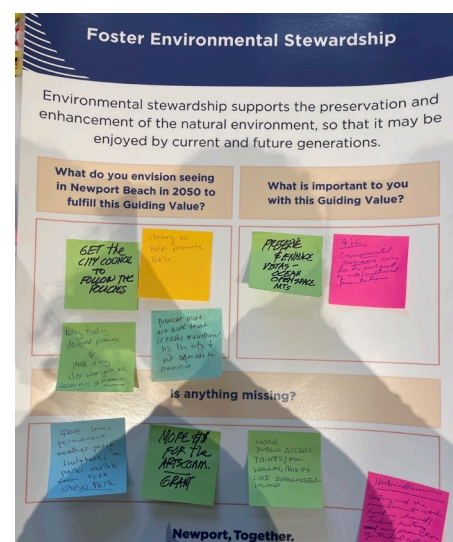
## Administer Financial Resources Responsibly

- ▶ Balanced budget with money reserves
- ▶ Ensure that our financial house is in order
- ▶ Continue financial support of Arts Commission and sculpture exhibits in Civic Center Park
- ▶ The City should allow sponsorships for public art. Not big signs, but QR codes to help fund the arts
- ▶ TOT (transient occupancy tax) taxes should contribute to arts programs
- ▶ Robust arts and historical budget working with citizens for donations or companies to sponsor public art and programs
- ▶ Preserve the cottages
- ▶ Public art isn't the forethought but is an afterthought
- ▶ Consider financial support for a more robust museum
- ▶ Sell sponsorships for concerts - don't add more development fees
- ▶ Preserve neighborhood aesthetics
- ▶ The City needs a more significant tax share. Increase taxes on visitors to allocate to the arts
- ▶ Mills Act for tax incentives
- ▶ Art in the park: more visual art in private collections; an event where people can donate art for fundraising
- ▶ Ensure Newport Beach doesn't get too big and too crowded = not fun



## Foster Environmental Stewardship

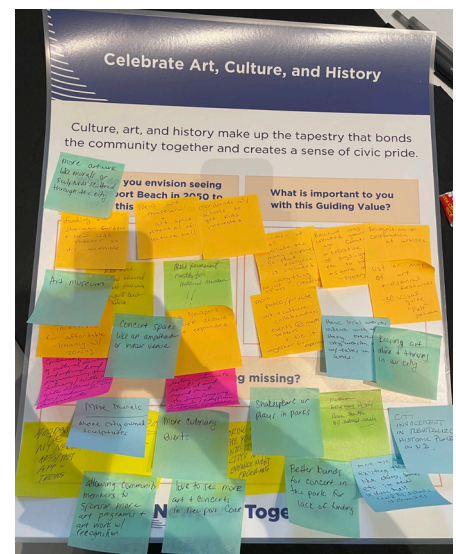
- ▶ Get the City Council to follow the policies
- ▶ Library to help promote the GPU
- ▶ More money for the Arts Commission through grants
- ▶ Wayfinding, designed pathways - make it clear where the community can walk and enjoy their surroundings
- ▶ Preserve and enhance visits - ocean, open space, mountains
- ▶ More public access points for walking/hiking, like Shell Maker Island
- ▶ Promote more artwork that is easily maintained by the City and not expensive to maintain
- ▶ Environmental programs can be the subject of arts and cultural presentation
- ▶ Some weatherproof sculptures in parks along PCH
- ▶ History and the environmentalist should work hand-in-hand; tribal history and preservation of tribal artifacts





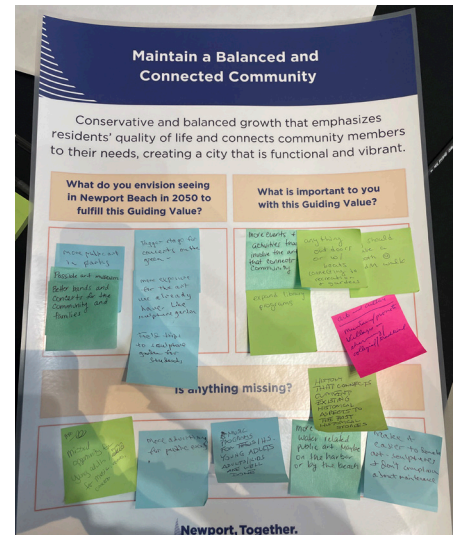
## Celebrate Art, Culture, and History

- ▶ More artwork like murals and sculptures scattered throughout the city
- ▶ Definition of art - include the many disciplines so that everyone is included, not just arts organizations
- ▶ City involvement in revitalizing historic places in Newport Beach
- ▶ New art museum and art space - potentially off the lecture hall
- ▶ A brochure was created years ago. Create a collective of organizations, galleries, etc. to collaborate and share resources - synergy
- ▶ More use of existing facilities, i.e., the new lecture hall could be [used for] schools or churches
- ▶ Coordinate with schools to get kids interested
- ▶ Recognition and celebration of artists
- ▶ Better bands for concerts in the park for lack of funding
- ▶ Funding for Sherman Gardens and new Lido Theater so it's accessible
- ▶ List or map of art and historical resources; 3D visual guide "felt" software
- ▶ More culinary events
- ▶ Expanded Newport Beach app
- ▶ More public/private art and culture collaborations
- ▶ Shakespeare or plays in parks
- ▶ Add an art museum
- ▶ Events at main venues and tie them together for experience
- ▶ Love to see more art and concerts on Newport coast
- ▶ Concert space like an amphitheater or indoor venue
- ▶ Keeping art alive and thriving in our city
- ▶ Bring in the youth into the city's arts/history. Enhancement programs
- ▶ New, permanent facility for the historical museum
- ▶ Have local artists video with their stories. Present on our City website with talks in lecture series
- ▶ Allowing community members to sponsor more arts programs and artwork with recognition
- ▶ More murals/City-owned sculptures
- ▶ Establish funding
- ▶ Continued promotion of cultural, educational, and informational programming through library/Witte Hall/Witte Lectures
- ▶ Newport Beach has a rich history; continue to honor and report on it.
- ▶ Create artist live/workspaces; incentives for affordability and leniency with zoning



## Maintain a Balanced and Connected Community

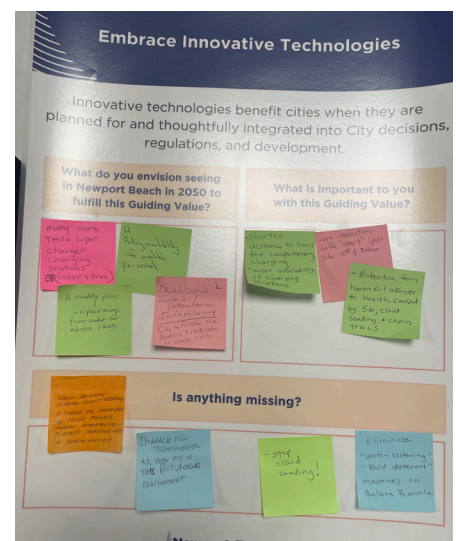
- ▶ More public art in parks
- ▶ More events and activities that involve the arts that connect the community
- ▶ Missing opportunities for young adults, especially with music
- ▶ Possible art museum
- ▶ Expand library programs
- ▶ More advertising public events
- ▶ Better bands and concerts for the community and families
- ▶ Anything outdoors or with boats connecting to the recreation and gardens
- ▶ Music programs for high school/young adults
- ▶ Bigger bands for Concerts on the Green
- ▶ Maintain/promote villages/charming design
- ▶ Make it easier to donate to art - sculptures and don't complain about maintenance
- ▶ More exposure to the art we already have, like the sculpture garden
- ▶ History that connects current and existing historical aspects to past historical stories
- ▶ More beach/water-related public art. Maybe on the harbor or by the beach
- ▶ Field trips to the sculpture garden for students



## Workshop 4: Land Use & Harbor, Bay and Beaches

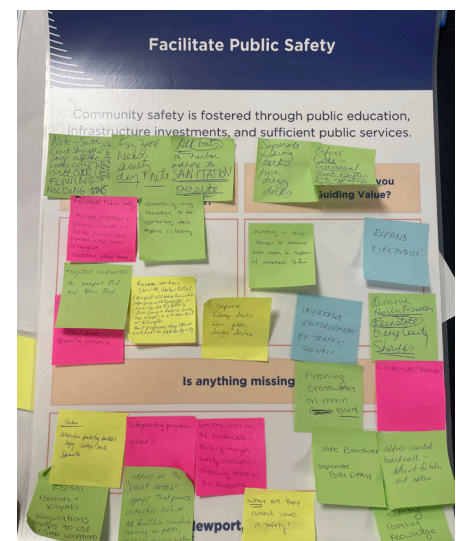
### Embrace Innovative Technologies

- ▶ Many more Tesla supercharger charging stations (solar and free)
- ▶ Shorter distance to travel for complimentary charging
- ▶ Self-driving shore boat service
- ▶ Parking availability info pre-arrival
- ▶ More availability of charging locations
- ▶ A tram or monorail to move people from strategically placed parking lots; a people mover
- ▶ Healthy place - a place where walking or electric bikes are accessible
- ▶ More intersections with "smart" lights, like 15th and Balboa
- ▶ Embrace new technologies as they fit in the picturesque environment
- ▶ Broadband - internet/communications Infrastructure
- ▶ Protection from harmful effects on residents' health caused by 5G, cloud seedings, and chemtrails
- ▶ Stop cloud seeding
- ▶ City to follow the success established in other cities
- ▶ Eliminate "anti-loitering" or "bird deterrent" machines on the Balboa Peninsula



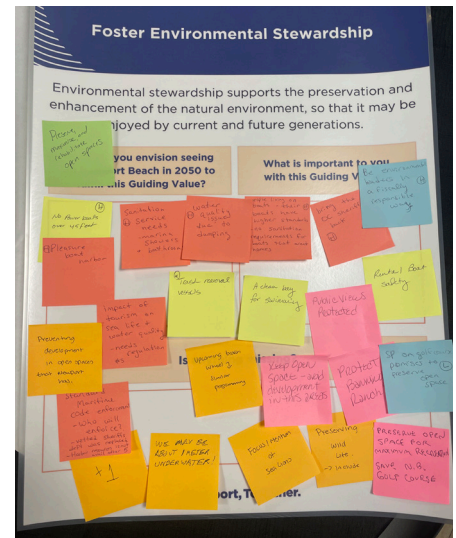
## Facilitate Public Safety

- ▶ Lighted crosswalks on Newport Blvd and Balboa Blvd.
- ▶ Separate fishing docks
- ▶ Protect harbor infrastructure/buildings
- ▶ Note: South Coast Shipyard
- ▶ Investing in sound science to determine what needs to happen with increased sea level rise
- ▶ Lifeguarding program - sustain it
- ▶ All boats in the harbor adhere to the sanitation requirements
- ▶ Expand Fire Medics
- ▶ Rental boars and kayaks regulations and maps to use for safe locations
- ▶ Fun Zone needs security - day and nights
- ▶ Increased enforcement of traffic signals
- ▶ Address all the “social media: groups that promote activities, such as the NB Run Club
- ▶ Increase police force + presence, consider substations
- ▶ Consider headquarters in the center of Newport
- ▶ Remove Harbor Resources and reinstate Orange County Sheriff
- ▶ Electric bikes on the boardwalk - thinking through the safety implications of allowing them on the boardwalk
- ▶ Connectivity using technology to see opportunities where communication is lacking
- ▶ Finishing crosswalks on Main Blvd.
- ▶ Infrastructure aging (seawalls and groins); focus investment in City & State shoreline
- ▶ Safe boardwalks
- ▶ Rescue workers: Sheriffs and Harbor Patrol are equipped with rescue tools, such as a small scuba air bottle, to dive down and rescue someone caught in a boat or a helicopter
- ▶ Boat employees have certifications paid for by the City
- ▶ Separate bike path
- ▶ Address crowded boardwalk - difficult for bikes and walkers
- ▶ Boating safety and boat knowledge



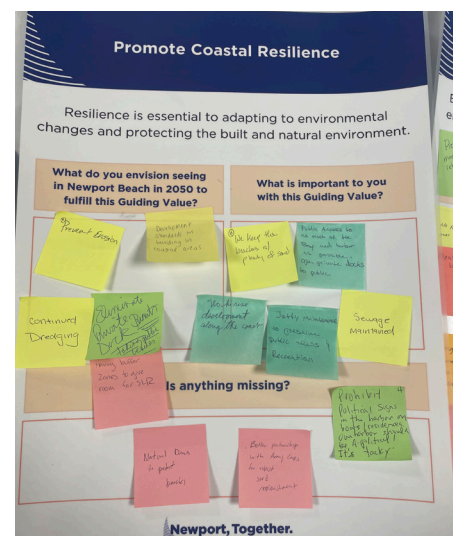
## Foster Environmental Stewardship

- ▶ Preserve, maximize, and rehabilitate open space
- ▶ Be environmental leaders in a fiscally responsible way
- ▶ Water quality issues due to dumping
- ▶ No power boats over 45 feet
- ▶ Bring the Orange County Sheriff back
- ▶ Standard maritime code enforcement - Who will enforce it? The vetted sheriff's department was replaced; Harbor
- ▶ Resources are not available after 5 pm
- ▶ Pleasure boats along the harbor
- ▶ A clean bay for swimming
- ▶ We may be about 1 meter underwater
- ▶ Sanitation service needs - marina showers and bathrooms
- ▶ Rental boat safety
- ▶ Upcoming trash wheel - similar programming
- ▶ Trash removal vessels
- ▶ Public views protected
- ▶ Keep open space - avoid development in this area (Peninsula)
- ▶ Impact of tourism on sea-life and water quality - needs regulations
- ▶ People live on their boats - their boats have higher standards
- ▶ Protect Banning Ranch
- ▶ Preventing development in open spaces that Newport Beach has
- ▶ No sanitation requirements for boats that aren't homes
- ▶ Focus/mention of sea lions
- ▶ Preserving wildlife



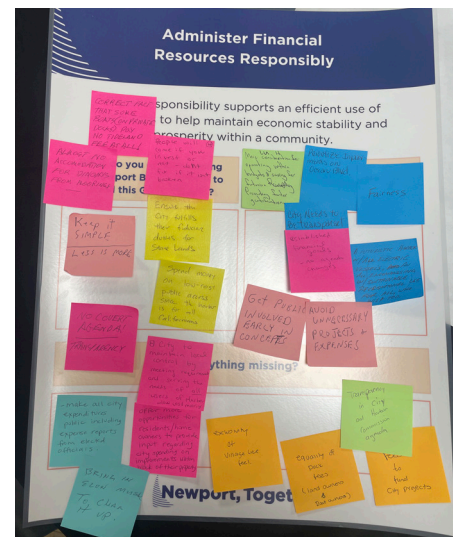
## Promote Coastal Resilience

- ▶ Prevent erosion
- ▶ We keep the beaches with plenty of sand
- ▶ Natural dunes to protect beaches
- ▶ Development standards for building in coastal areas
- ▶ Public access to as much of the bay and harbor as possible, open private docks to the public
- ▶ Better partnership with the Army Corps for robust sand replenishment
- ▶ Continue dredging
- ▶ Jetty maintenance to preserve public access and recreation
- ▶ Prohibit political signs in the harbor on boats/residences on the harbor, which should be apolitical. It's tacky!
- ▶ Eliminate private docks; taking public beaches
- ▶ Sewage maintained
- ▶ Having buffer zones to give room for sea level rise
- ▶ No high-rise development along the coast



## Administer Financial Resources Responsibly

- ▶ Correct fact that some boats (on private docks) pay no tideland fee at all
- ▶ Get the public involved early in concepts
- ▶ Make all City expenditures public, including expense reports from elected officials
- ▶ Almost no accommodations for dioxins from mooring
- ▶ Avoid unnecessary projects and expenses
- ▶ Bring in Elon Musk
- ▶ People will come if you invest or not - don't fix if it isn't broken
- ▶ Offer more opportunities for residents/homeowners to provide input regarding City spending on improvements within a block of their property
- ▶ Keep it simple
- ▶ City needs to be transparent
- ▶ Exclusivity of village-like feel
- ▶ Ensure the city fulfills its fiduciary duties for State Lands
- ▶ Establish financial goals for equality of dock fees (landowners and boat owners)
- ▶ Spend money on low-cost public access since the harbor is for all Californians
- ▶ Prioritize improvements on Ocean Blvd.
- ▶ Transparency in City and Harbor Commission agenda
- ▶ City to maintain local control by meeting requirements and serving the needs of all users of the harbor - low-cost mooring
- ▶ More considerations for operating within budgets and saving for the future. Preventing further gentrifications
- ▶ No covert agenda - TRANSPARENCY
- ▶ A futuristic harbor with all electric vessels and all-encompassing with sustainable recreational use for all who wish to

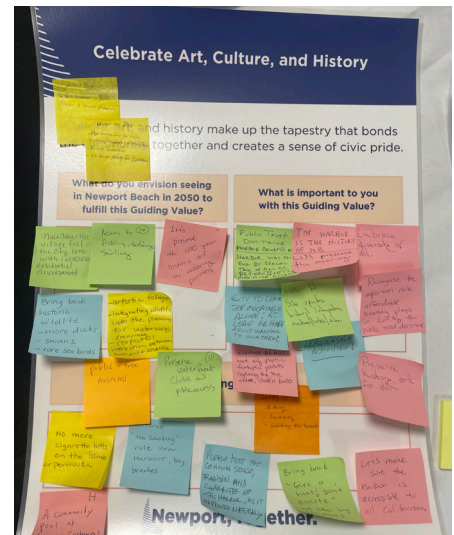


## Celebrate Art, Culture, and History

- ▶ Maintain the village feel of the city, even with increasing residential development
- ▶ Preserve history, art for all
- ▶ No more cigarette butts on the island or peninsula
- ▶ Bring back historic wildlife - more ducks, swans, and rare sea birds
- ▶ Embrace diversity of all and enforce the “no smoking” rule near harbors, bays, beaches
- ▶ Artistic foliage
- ▶ Recognize the important role affordable boating plays in fulfilling the public trust doctrine

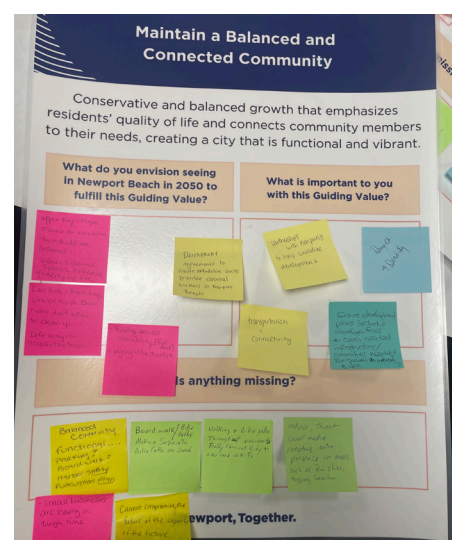
## Celebrate Art, Culture, and History Continued

- ▶ Please keep the common sense, traditions, and character of the harbor, as it happened naturally
- ▶ Integrating wildlife into the planning for waterways
- ▶ Site-specific historical interpretive markers, links, signage
- ▶ A community pool at lower Castaways, near the harbor
- ▶ Encourage respectful interactions between humans and wildlife
- ▶ City to leave the moorings alone!
- ▶ Bring back the “Give a Hoot, Don’t Pollute” campaign and ticket litterbugs
- ▶ Access to fishing and surfing
- ▶ The harbor is the history of Newport Beach
- ▶ Let’s make sure the harbor is accessible to all Californians
- ▶ Let’s preserve the 100-year history of mooring permits
- ▶ Let’s preserve the mooring
- ▶ Safety in biking, swimming, and walking the beach
- ▶ Free public museum
- ▶ Public trust doctrine: Harbor benefits all. The harbor is special and paid for by taxes. Let’s maximize the access
- ▶ Preserve waterfront clubs and public access
- ▶ Preserve the character of the moorings. DO NOT have only plastic-fantastic yachts replacing the older, classic boats
- ▶ No hidden leadership activities



## Maintain a Balanced and Connected Community

- ▶ Partnerships with nonprofits to help subsidize development
- ▶ Balanced community - functional...parking? Boardwalk? Harbor safety? Evacuation plan?
- ▶ The value of natural spaces enhances the quality-of-life transportation and connectivity
- ▶ Small businesses are having a tough time
- ▶ Low tide - Back Bay, lots of trash. Environmental rules don't allow for clean-ups. Is there a different way to access the trash?
- ▶ Balance height and density
- ▶ Cannot compromise the present at the expense of the future
- ▶ Boating services availability (fuel docks?)
- ▶ Ensure development plans include a developer's fee to cover needed infrastructure/amenities needed for growth in intensity and use boardwalk/bike paths: separate the paths
- ▶ Aging infrastructure
- ▶ Walking and bike paths through Newport.
- ▶ Development agreements to ensure affordable units prioritize essential workers in Newport Beach
- ▶ Trolley through the city and to low-end units
- ▶ Social Media creates extra presence in areas



# DRAFT IDEAS TO SUPPORT THE ELEMENTS

## Natural Resources

### **Goal 1: Ecosystems that are connected and sustainable**

Balanced ecosystems provide essential services, such as filtering and storing water, storing carbon in vegetation and soil, purifying the air, providing habitat for wildlife, and creating visually appealing and enjoyable places for people. Well-functioning ecosystems include diverse native and naturalized non-invasive species which support complex food webs, a mix of habitats, and nutrient cycling. Promoting native and environmentally adapted species across public and private land will enhance and expand an integrated network of resilient ecosystems.

### **Goal 2: Ecosystems that are conserved and restored**

Ecosystem restoration and conservation are vital for maintaining unique grassland, woodland, marsh, dune, and other habitats. Large ecological reserves can serve as nurseries for native and environmentally adapted species that support smaller ecosystems across Newport Beach. Further ecosystem restoration could restore additional habitats for protecting endangered species, building resilience to coastal flooding and sea level rise, and encouraging community involvement in environmental efforts.

### **Goal 3: Clean water in Newport Bay and the coast**

Clean water is necessary for human health, recreation, and aquatic habitat and organisms. Improving water quality in Newport Bay and in coastal waters can ensure safe enjoyment of these irreplaceable natural resources for residents and visitors, while continuing to support the businesses and employers that rely on close proximity to the coast. Reducing stormwater runoff, restoring floodplains, and preventing waste from entering waterbodies can improve water quality and realize the benefits of clean water.

### **Goal 4: Water that is conserved and used responsibly**

Clean water is a precious resource in Southern California. Reduced indoor and outdoor water use can play an important role in conserving water. By implementing best practices for landscaping and irrigation on public property and offering incentives for residents and commercial businesses to conserve water on their property, the City can do its part in sustaining long-term water supply.

### **Goal 5: A city that prevents air pollution and has clean air**

Poor air quality has numerous health consequences, especially for vulnerable populations, such as children, older adults, and people with asthma. Encouraging walking, biking, and transit and building more well-designed electric vehicle charging consistent with demand can help reduce air pollution caused by vehicles, and using landscape barriers along busy roadways or as a buffer between other potential pollutants can help clean the air before it reaches sensitive populations.

### **Goal 6: Viewsheds and corridors that are preserved**

Sweeping views of the beaches, harbor, and coast distinguish Newport Beach as a city with unparalleled natural beauty. Viewsheds often hold historic or scenic value and should be protected for current and future generations. Preserving viewpoints and corridors allows the public to appreciate the City's beauty and character.

### **Goal 7: A city that leverages alternative sources of energy**

Leveraging alternative and renewable energy sources can reduce emissions from vehicles and buildings. Facilitating a reasonable transition to clean energy vehicles, promoting energy efficiency of buildings, and utilizing public facilities to generate renewable energy can help reduce local air pollution and overall reliance on fossil fuels, increasing energy security in the community.

### **Goal 8: A city with minimal impacts from oil and gas drilling activities**

Phasing out oil production can help achieve the statewide objective of phasing out extraction of oil and gas by 2045. The transition away from oil extraction presents an opportunity to prioritize clean energy investments for economic development.

## **Recreation**

### **Goal 1: A community with high-quality recreation programs**

Recreation programs enrich community members' lives by building social connections and providing opportunities for learning and physical activity. Recreation programs that are of high-quality and tailored to the community's needs can foster an engaged and healthy community.

### **Goal 2: New parks and connections that increase resident access to recreation, parks, and open space opportunities**

Parks are a vital asset in any community, providing opportunities for refuge, recreation, and socialization, while offering physical and mental health benefits. Newport Beach's varying landscape provides a variety of unique recreational opportunities for the community. Increasing park access and developing recreational opportunities throughout the community can ensure these benefits are available to all residents of all ages and needs.

### **Goal 3: Open space, park, and recreation facilities that are preserved, upgraded, and well-maintained**

The preservation and maintenance of open space and park facilities is essential to maintain community access to recreational opportunities. The maintenance and needed upgrades to these facilities can help protect City investments while ensuring that residents have continued access to high-quality recreational facilities that meet changing needs.

### **Goal 4: A City with established and maintained relationships to facilitate interagency and interorganizational coordination**

Coordination with internal departments and outside agencies and organizations creates opportunities to share resources, promotes effective communication, and can help facilitate the successful implementation of General Plan goals and policies. Moreover, coordination can increase the quality of and access to parks and open space through integrated strategies and efficient use of resources.



### **Goal 5: Parks and recreation facilities that are adapted to meet a variety of needs for existing and future residents, including people with disabilities**

As the environment changes and the population shifts, it is important that open space continues to meet community needs and provides benefits to human health, well-being, and the environment. Finding opportunities to expand or adapt parks and recreation facilities to serve older adults and people with disabilities can help to serve all residents now and in the future. Furthermore, designing parks and recreation facilities to be resilient to extreme heat, flooding, and wildfire can ensure these amenities continue to function despite environmental changes.

### **Goal 6: A City that protects public beach access**

Beaches are one of the most important public open spaces for providing relief during hot summer days and access to the ocean. Maintaining physical access points and supportive facilities and services can help protect continued public beach access.

### **Goal 7: Adequate support facilities in open space and recreation facilities**

Support facilities are an important aspect of providing parks and recreation spaces that are highly used and enjoyed by the community. Support facilities include but are not limited to, restrooms, showers, lifeguard towers, parking, and staffing. Providing and maintaining facilities needed to support varying recreational spaces in the City can help ensure parks and open spaces are enjoyed by the community and maintain a high-quality level of service.

## **Coastal Resilience**

### **Goal 1: A community that is resilient to coastal flooding**

Coastal communities face additional challenges as it relates to flooding from tsunamis, rogue waves, king tides, storm surges, seiche, and precipitation that continues to intensify as sea-levels rise. With more frequent storms, it is important that the City and community are prepared for flood risks, especially along the coast. While infrastructure can protect the community in the event of flooding, it is also important that existing and planned development is modified and built to last and that the community is aware of how to best protect themselves and their property.

### **Goal 2: A community protected from floods through adequate and well-maintained infrastructure**

Infrastructure is an essential component of a community and must be developed and maintained to adequately respond to flood hazards. Sufficient infrastructure can consist of both nature-based and gray solutions to protect the community during storms, king tides, and other potential flood events. As the extent of flooding changes, the type of infrastructure needed may also change. Therefore, this goal is intended to address changing needs associated with flooding and the steps needed to adequately plan for such infrastructure.

### **Goal 3: Beaches that are maintained and protected from erosion**

The City's beaches are an essential part of the community, providing recreational opportunities, driving tourism, which contributes to the local economy, supporting natural ecosystems, and protecting inland areas from flooding. Efforts to minimize erosion and the loss of sand will help protect the shoreline and maintain beaches.

### **Goal 4: Stabilized bluffs to minimize erosion and prevent landslides in developed areas**

Bluffs are an important part of the City's landscape, providing valuable views, development of homes and other uses, and offering natural habitat for many plant and animal species. The land formations in and around Upper Newport Bay and the coastal cliffs and bluffs in and proximate to Corona del Mar are some of the most vulnerable. Development near coastal bluffs is vulnerable to damage from erosion or complete loss due to landslides.

## **Goal 5: Current and accessible data and information on flooding, beach erosion, and bluff erosion**

Projects and programs to manage the shoreline require up-to-date data for flood-prone locations, the direction and rate of sand and bluff erosion, among other information on changing conditions. Current, high-quality data allows for a more tailored, responsive approach to managing the shoreline.

## **Safety**

### **Goal 1: High-quality public safety, emergency preparedness, and response services**

Because no two disasters are ever the same, high quality public safety requires significant planning and preparation to support a variety of needs in a variety of conditions. Public safety must consider needed facilities, equipment, staff, training, public education, planning, and post disaster recovery. Adequate planning and preparation lead to strong response and recovery from hazard events, including fire, flooding, coastal hazards such as tsunamis and rogue waves, earthquakes, geologic hazards such as landslides, and extreme heat.

### **Goal 2: Evacuation routes and centers that are maintained to provide functionality during hazardous conditions**

Evacuation strategies are important to help ensure public safety and prevent injuries in an emergency. The need for evacuation could arise as a result of a hazard event and could involve either small or large numbers of people, depending on the type and extent of a hazard event. Therefore, effective evacuation strategies are key to protecting public health and safety and providing efficient access for first responders.

### **Goal 3: Tested and effective communication systems for emergency preparedness and response**

Communication systems are an essential component of emergency preparedness and response. Effective communication systems can help facilitate response efforts, connect people to resources, and educate people about emergency preparedness and response.

### **Goal 4: Reduced and well-managed urban and wildland fire hazards**

As urban and wildfire hazards can impact communities across Newport Beach, mitigation strategies and limits to new or redevelopment may be necessary. Many hillside communities in the eastern portion of the City, in and surrounding Newport Coast are in a very high fire hazard severity zone. Homes, businesses, and other structures in these areas must be adapted to prevent the spread of fire.

### **Goal 5: A community that is resilient to and protected from inland flooding**

While minimal, some areas of the City that are not along the coast are still vulnerable to flooding. Inland flooding can occur in flood plains and low-lying areas when rainfall exceeds the amount that can be absorbed by the ground or accommodated by channels. While most flood risks exist in areas closest to the shoreline, it is important that inland flooding potential is also considered for the protection of existing and planned development.

### **Goal 6: A built environment adapted to provide relief from extreme heat**

As summer temperatures continue to get hotter and heat waves become more common, the City must adapt to changing temperatures to protect the health of residents and visitors, particularly vulnerable populations. Strategies such as air conditioning, home weatherization, and increased shade in public areas can help the community stay cool on hot days.

## **Goal 7: Buildings and utilities that are protected from seismic and geologic hazards**

While difficult to predict, seismic and geologic events pose a risk to physical structures. While new buildings are held to higher standards to be resilient to such events, existing buildings can be modified to minimize structural damage.

## **Goal 8: A community protected from airport-related hazards**

John Wayne Airport produces noise in the vicinity of the airport and its general aviation flight path. Additionally, the airport contributes to air quality in the vicinity of the airport. To the extent practicable, and consistent with the Settlement Agreement, there are actions the City can take to influence airport operations and help protect future residents from noise and air pollution.

## **Goal 9: A community protected from impacts of hazardous materials**

Hazardous materials produced from manufacturing and industrial facilities have the potential to negatively impact public health and safety and degrade the environment if not properly managed. Although hazardous materials are primarily regulated by state and federal agencies, local governments play a pivotal role in hazard mitigation planning, enforcement and inspection of hazardous waste generators, and increasing public awareness.

## **Goal 10: A community where residents, employees, and visitors feel a sense of comfort and safety**

Providing a sense of comfort and safety in the public realm can be achieved through design and development that encourages “eyes on the street.” The concept of “eyes on the street” uses place-based design in public spaces to increase community awareness, build social cohesion, improve community bonds, enhance sense of safety, and increase social interaction. Designing for safety can include regular maintenance of parks, lighting, trash, and streets; which requires a level of fiscal responsibility. Further, balanced communities with opportunities for a mix of uses such as residential, retail, employment, and visitor serving uses, can draw people at all hours of the day; increasing “eyes on the street” and community safety.

## **Arts and Culture**

### **Goal 1: A community enriched by and connected to the arts, culture, libraries, and education**

Arts, culture, library, literary, education opportunities, and creativity can enhance quality of life for residents, improve visitor experiences, and contribute to the local economy. Expanding exposure to the arts and culture brings a unique sense of identity to Newport Beach and connects residents to their community and those around them through shared experiences.

### **Goal 2: Programs and exhibits within the City are widely promoted, marketed, and attended**

Raising awareness and generating enthusiasm for the arts is key to increasing participation in programs, exhibits, and events. This entails marketing materials throughout the city, social media campaigns, and creating new ways for people to engage in the arts through interactive technologies. A multi-faceted approach that includes traditional and novel outreach and engagement methods can capture the attention of residents and visitors of all ages.

### **Goal 3: Funding that helps artists and art programs flourish**

Investment from philanthropic organizations, the City, and community members can help the arts thrive by supporting local, emerging, and other artists, providing new and upgraded facilities, and bolstering programs. While funding should support art from within and outside Newport Beach, funding for local art should be prioritized. Such financial contributions to the arts can increase not only the quantity of art and programs in the community but the quality. Funding and investment should reflect the high value placed on the arts in the community.

### **Goal 4: State-of-the-art facilities to host art exhibits and programs**

Facilities dedicated to the arts, such as galleries and performance and lecture halls, provide a place for the community to gather in appreciation of the arts, education, and culture and to promote Newport Beach as a regional destination for the arts. Additionally, integrating art in existing community centers, libraries, recreation facilities, parks and other open space, and in private buildings play a vital role in realizing Newport Beach as a city of the arts.

### **Goal 5: A wide collection of art exhibited throughout the city**

A well-functioning system for accepting, maintaining, and rotating art throughout public spaces, including The Sculpture Exhibition in Civic Center Park, and facilities helps sustain renewed interest and ensure high quality of exhibits. Developing guidelines and criteria for accepting art donations and acquisitions and dedicating staff to manage public art can ensure the system for managing art is consistent and smoothly operates.

### **Goal 6: A City with strong partnerships that support thriving arts, culture, and education**

Partnerships are crucial for maintaining existing and realizing new opportunities to cultivate art and culture exhibits, programs, events, and funding. Strong coordination between City staff and private institutions; partner agencies; and local, emerging, and other artist organizations can facilitate community involvement in arts and culture, procurement of funding, and successful management of public art.

## **Historical Resources**

### **Goal 1: A city that celebrates, preserves, and protects its history**

Preserving the city's history is essential for maintaining its unique identity and cultural heritage. By celebrating and safeguarding historically significant land marks, sites, structures, and legacy businesses, the city can honor the stories and achievements of past generations. Further, by recognizing and celebrating those that have contributed to Newport Beach's past, present, and future, our storied history can be captured. The recognition and protection of history not only enriches a community's sense of place and continuity but fosters civic pride and can attract tourism.

### **Goal 2: A city that enshrines its history through education**

Education is a key tool for enshrining the city's history and ensuring that future generations appreciate and understand this heritage. Integrating local history into City-sponsored, library, and other programs and events and promoting it through various media can create a well-informed community that values its roots. This awareness not only enhances residents' connection to their city but also helps future generations value the past.

### **Goal 3: Well documented and protected archaeological and paleontological resources**

Documenting and protecting archaeological and paleontological resources is crucial for preserving the evidence human history and life forms of the distant past. These resources inform our understanding of ancient ecosystems and cultures. This stewardship fosters a culture of respect and responsibility, ensuring that future generations can continue to learn from and appreciate this history.

### **Goal 4: A City and community that celebrates tribal cultural resources**

The foundational history of Tribal nations of the city's land provides unique insight into the importance of cultural places. Native American groups and individuals hold special interest in the protection of cultural places. Tribal views toward protection and preservation of cultural resources in the city should be respected and the history of Tribal nations should be recognized and celebrated.

## **Land Use**

### **Goal 1: Distinct neighborhoods and villages that accommodate planned development while maintaining their unique character**

Well planned and thoughtfully designed neighborhoods contribute to quality of life for residents and support community-wide needs. While each neighborhood has a distinct and unique identity expressed through design and development patterns, all neighborhoods should be well-maintained and have diverse, cohesive development. Planned development should integrate sophisticated urban design that is compatible with neighborhood characteristics to blend with the surrounding urban fabric.

### **Goal 2: Planning sub-areas that accommodate planned housing development in a cohesive manner**

Each planning sub-area has individual characteristics that must be considered when planning to accommodate planned development. Some planning sub-areas are identified as housing opportunity sites, including the Airport Area, Newport Center, and West Newport Mesa, while others prioritize commercial, open space, or other uses, such as Balboa Peninsula, Lida Village, Cannery Village, and McFadden Square; Balboa Village; Corona del Mar; Old Newport Boulevard, and West Newport Mesa. New development can be accommodated in a way that maintains the characteristics of the area and creates longstanding neighborhoods that are cherished by the community.

### **Goal 3: Efficient use of land to create livable neighborhoods and support economic development**

Utilizing land in an efficient manner is important for the local economy, environment, and balanced communities. Development should be planned carefully to accommodate community needs while preserving natural resources. Opportunities to utilize land efficiently and create livable neighborhoods can include, creating pedestrian friendly spaces through design and development standards such as "building to curb," incentives to encourage enhanced landscaping and streetscapes to seamlessly blend development and the public realm, and flexible approaches to parking to unlock new building typologies and encourage high-quality architecture.

### **Goal 4: Infrastructure that supports new development, maintains and improves existing development, and is adaptable to new technologies**

Maintaining adequate water, power, and transportation infrastructure is crucial for servicing existing and new development. However, population growth and environmental change can make this more challenging. A larger population and increased energy and water demand can strain infrastructure capacity, and hazards such as extreme heat, flooding, and fire can lead to damage or disrepair. Infrastructure can be adapted, upgraded, and designed to integrate emerging technologies to be more resilient to these impacts.

### **Goal 5: A prompt and efficient system for development permit processing**

Permitting new development to achieve the goals of the General Plan hinges on an effective system for processing development permits. Ensuring staff have the capacity and resources to guide development review from pre-application meeting to final approval can enhance the efficiency of the process. Well-organized coordination between different departments and agencies can streamline operations, leading to more successful project outcomes.

### **Goal 6: Residential neighborhoods that are well-designed and contribute the livability and quality of life of residents**

Newport Beach has distinct neighborhoods that together contribute to the charm and unique sense of place of the city. Residential neighborhoods should be of high-quality design. Design standards should consider compatibility with existing neighborhoods including the scale of development, privacy, and amenities. Residential neighborhoods should contribute to Newport Beach's livability by thoughtfully planning the location and types of housing permitted.

### **Goal 7: Commercial districts and centers are well-planned and exhibit a high level of architectural and landscape quality**

Commercial districts and centers create opportunities for shopping, employment, socialization, and provide essential services and goods for the community. The design of commercial districts and centers is important for shaping how residents and visitors use, access, and interact with these types of establishments.

### **Goal 8: Mixed-use districts are designed and planned to ensure compatibility among a variety of uses**

Mixed-use districts contribute to balanced communities through the integration of residential, employment, retail, recreation, and service-oriented uses. These uses contribute to a high quality of life for residents and local businesses, such as, increased walkability, creating vibrant spaces, economic development, and access to amenities. Mixed-use districts should be paired with high-quality design to contribute to neighborhood character and flexibility in uses that is responsive to market demands.

### **Goal 9: Office and business parks exhibit a high-quality image, are attractive, and provide quality working environments for employees and services for the community**

Well-planned and designed office and business districts can provide a high-quality working environment for employees and serve the surrounding community. Office and business parks should integrate a campus-style environment through design elements that promote connectivity, common spaces such courtyards, and encourage pedestrian activity. Office and business districts located adjacent to residential uses should encourage a mix of community-serving commercial uses to serve nearby residents and expand the use of the area outside of regular work-day hours.

### **Goal 10: Industrial districts that provide flexibility to incorporate community-serving uses and encourage transition to co-locate employment, residential, and creative and artistic uses**

Co-location of industrial and residential uses can be a good way to provide more homes, create and protect local employment, and foster innovation. New innovations in materials and technologies are making industry cleaner, greener, and quieter. Industrial districts should be encouraged to support changing neighborhoods, while providing a dynamic mix of uses that are both sensitive to and supportive of residents and employees. While maintaining Newport Beach's values and community character, industrial districts can provide an opportunity for uses that support innovation, creativity, and the arts in existing industrial areas in response to market demands.

## **Goal 11: Public and institutional uses that enhance the quality of life for residents and are located and designed to complement Newport Beach's neighborhoods**

Co-location of industrial and residential uses can be a good way to provide more homes, create and protect local employment, and foster innovation. New innovations in materials and technologies are making industry cleaner, greener, and quieter. Industrial districts should be encouraged to support changing neighborhoods, while providing a dynamic mix of uses that are both sensitive to and supportive of residents and employees. While maintaining Newport Beach's values and community character, industrial districts can provide an opportunity for uses that support innovation, creativity, and the arts in existing industrial areas in response to market demands.

## **Harbor, Bay, and Beaches**

### **Goal 1: High quality beaches that are enjoyed by residents and visitors**

High-quality beaches are clean, have high-quality sand, ensure safe and sufficient access, and provide amenities such as restrooms, showers, and parking. By maintaining high beach quality, the city can enhance the user experience, boost tourism, and maintain the vibrant, coastal community.

### **Goal 2: Coastal resources that are easily accessed and rich with recreational opportunities**

Access to coastal resources provides recreational, health, and economic benefits. The harbor, bay, and beaches should be valued for the recreational opportunities they provide and access should be provided and maintained for current and future generations. Enhanced recreational opportunities and user amenities should be available at appropriate locations to enhance the user experience.

### **Goal 3: A healthy coastal ecosystem**

A healthy marine environment is essential for recreational activities including swimming, fishing, and boating as well as the preservation of natural species and their habitat. Management of coastal ecosystems and ensuring environmentally friendly practices can benefit both the community and the environment, maintaining high water quality.

### **Goal 4: Well-managed and economically productive harbor, bay, and beaches**

Administration and management of the harbor, bay, and beaches includes coordination between various regulatory agencies and departments, balanced public investment with revenue, and well-maintained public facilities. Efficient and effective management policies will maintain the City's ability to provide high quality services that are accessible to a broad range of people and businesses.

### **Goal 5: A harbor, bay, and beaches that attract tourism and maintain the character of coastal neighborhoods**

Attracting tourism while preserving the unique character of coastal neighborhoods is key to maintaining the city's charm and appeal. This includes maintaining architectural components that match the city's character as well as protection of coastal dependent uses and local businesses. By supporting a tourism industry that celebrates Newport Beach's cultural and historic resources and community feeling, the City can create an attractive environment for residents and visitors alike.

**Goal 6: Preserved coastal-dependent uses that contribute to the charm and character of the harbor, bay, and beaches**

Recreation and commercial use of the bay and harbor depend on prioritizing coastal dependent uses and coastal related uses, such as boating launches, storage, and rentals; tourism serving uses, including hotels and retail; recreation; habitat; and scenic areas. These uses contribute to the local economy, resident and visitor activities, and the character of the community.

**Goal 7: Waterfront Businesses and Services that contribute to a successful harbor and bay**

In order for the harbor and bay to be successful, it must provide a variety of businesses and services to adequately meet the needs of users. Such businesses and services include but are not limited to vessel and recreational rentals, sightseeing and harbor tours, yacht clubs, fuel docks, public launch ramps, and more. Further, the use of these facilities and amenities should be accessible and safe for all users to avoid conflicts where they may occur and guide visitors to protect public health and safety.



# DRAFT GOALS PARTICIPANT INPUT

Below are the complete written comments, edited lightly for clarity, from each workshop. They are organized by the goal the sticky note was added to.

## Recreation

**Goal:** New parks and connections that increase resident access to recreation, parks, and open space opportunities

- ▶ New parks should be environmentally friendly, i.e., incorporating native landscapes when appropriate
- ▶ Promoting environmentally friendly buses and trolleys to access

## Arts & Culture

**Goal:** Funding that helps artists and art programs flourish

- ▶ Sponsorship to promote and fund the arts
- ▶ Make funding fun
- ▶ Funding is important for Historical Resources
- ▶ Skill building in arts management
- ▶ City grants: Staff to pursue funds

**Goal:** A community enriched by and connected to the arts, culture, libraries, and education

- ▶ Things get lost in history: Newport Beach has an official song
- ▶ Make Newport Beach more artistic. Have way more public art, murals, sculptures, and paintings on utility boxes

## Harbor, Bay, and Beaches

**Goal:** A healthy coastal ecosystem

- ▶ Seeing more fish with cleaner water
- ▶ Protect marine wildlife

**Goal:** A harbor, bay, and beaches that attract tourism and maintain the character of coastal neighborhoods

- ▶ Add “Maximize public access to our waters.”

**Goal:** Waterfront Businesses and Services that contribute to a successful harbor and bay

- ▶ Add “Preserve Low-cost Moorings”

## Natural Resources

**Goal:** Viewsheds and corridors that are preserved

- ▶ Viewsheds should be preserved. Let's please explore sand retention/replenishment with ideas other than dunes, e.g., reefs

**Goal:** Water that is conserved and used responsibly

- ▶ Remember freshwater as a limited resource (and high cost)! Promote activities that can save one of our most precious resources and keep those freshwater creeks as clean as possible for the environment.

## Historical Resources

**Goal:** Well-documented and protected archaeological and paleontological resources

- ▶ Emphasize “Stewardship”

**Goal:** A City and community that celebrates tribal cultural resources

- ▶ Emphasize “Preservation”

**Goal:** A city that enshrines its history through education

- ▶ Emphasize “Appreciate” and “Understand”
- ▶ Emphasize “Awareness”

**Goal:** A city that celebrates, preserves, and protects its history

- ▶ Oral History
- ▶ Historical Trees and Gardens
- ▶ Needs Funding

**Costal Resilience:** No comments were added.

**Safety:** No comments were added.

**Land Use:** No comments were added.

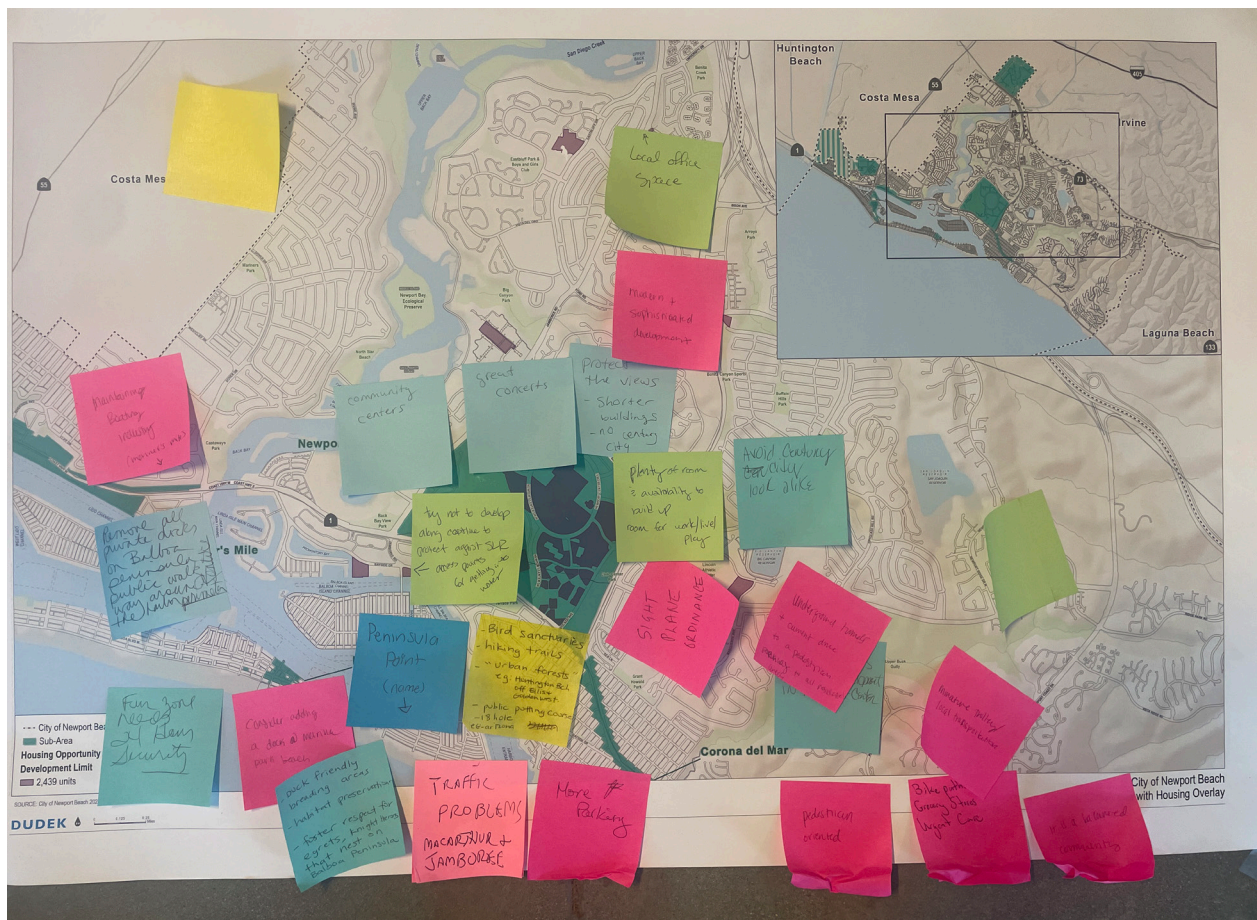
## APPENDIX E

# HOUSING OVERLAY SITES & COMMUNITY SUB-AREA MAPS

The complete written comments, edited lightly for clarity, can be found below for each subarea map. In addition, photos of the maps accompany the written comments.

### Newport Center

- ▶ Community centers
- ▶ The end of the peninsula is called “Peninsula Point.”
- ▶ Considering a dock at the Marina Park beach
- ▶ At Mariner’s Mile, maintain boating inclusivity
- ▶ Fun Zone needs 24-hour security
- ▶ Duck-friendly feeding areas
- ▶ Habitat preservation
- ▶ Foster respect for egrets and night herons that nest on Balboa Peninsula
- ▶ Traffic problem - Macarthur and Jamboree
- ▶ Bird sanctuaries
- ▶ Hiking trails
- ▶ “Urban forests,” e.g., Huntington Beach, off Eliset and Golden West
- ▶ Public putting course + 18-hole course
- ▶ Great concerts
- ▶ More parking
- ▶ Local office space (at subarea off of East Bluff Dr. near the Boys and Girls Club)
- ▶ Modern & sophisticated development
- ▶ Protect the views - shorter buildings, no Century City
- ▶ Plenty of room and availability to build up room for walk/live/play
- ▶ Sight plan ordinance
- ▶ Avoid Century City look-alike
- ▶ Limit heights of new development in Newport Center
- ▶ Pedestrian oriented
- ▶ Bike paths, grocery stores, urgent cares
- ▶ It is a balanced community
- ▶ Miniature trolley/local transportation
- ▶ Underground tunnels + connected pedestrian paths to all residential areas



## Airport Area

- ▶ Shopping, grocery store, amenities
- ▶ Finding a historical, notable legend - name it after them
- ▶ The City should hold workshops in each of the closest areas to the "sub-areas." If no current residential exists, then meet with business and property owners. (Airport Area is not being represented)
- ▶ Keep buffer zone to expand the bay
- ▶ Endangered species nest here! (Ridgeway) Keep the buffer
- ▶ Urban City center - becomes a gathering space
- ▶ Office usage - density balance to support parking
- ▶ Need a community center
- ▶ Good area for deaf people
- ▶ Workforce housing
- ▶ Parking management opportunity
- ▶ On-site parks, no in-lieu fees
- ▶ Need more bike connectivity to the bay
- Safe paths for bikes and scooters
- ▶ Noise will impact open space
- ▶ There is so much opportunity for mixed-use, but it needs to have parking
- ▶ More walkable retail shopping to support the population
- ▶ Irvine Ave is already congested. It would be interesting to turn this area into an "uptown."
- ▶ Consider daycare and K-6 private education in the area since the Airport Area is in the Santa Ana School District
- ▶ Watch County plans for connections from Back Bay to Fairgrounds
- ▶ Need more services for residents, e.g. grocery store
- ▶ Attract tech and finance buildings
- ▶ Service and entertainment corridor
- ▶ Urban nightlife - music clubs
- ▶ Connectivity that is not car-reliant - trolley or shuttle
- ▶ Incentivize young professionals and young families
- ▶ Call it "Uptown Newport"
- ▶ Airport Area stakeholder incentives: retail businesses, commercial office businesses, property owners, future residents, airport association users
- ▶ Integrate residents and businesses
- ▶ Create an identity that welcomes everyone
- ▶ Workshop in the Airport Area - daycare and K-6 schools; small businesses
- ▶ Commercial service and entertainment
- ▶ Think "The Grove' in LA - Accessible urban city center
- ▶ Higher density parking
- ▶ Enhanced infrastructure; Financial district - "Special Districts"
- ▶ Community Plan for the infrastructure, parks, mixed-use...area with pedestrian walkways



## West Newport Mesa/Banning Ranch/Cannery McFadden

- ▶ Emphasis on workforce housing, e.g., for Hoag employees
- ▶ Call it WE - West End
- ▶ Waterfront walkway, safe, walkable community
- ▶ Consider hybrid zoning - similar look and feel to Cannery Village
- ▶ Nice coffee shop
- ▶ More education
- ▶ Preserve harbor industry
- ▶ Consider hybrid zoning, e.g., a coffee shop on the bottom floor, apartments on the second floor (Cannery Village)
- ▶ Fast cars on the superior need to slow
- ▶ Encourage clean industrial
- ▶ No tall buildings
- ▶ Preserve boating industry
- ▶ Preserve views for those on the hill
- ▶ Pedestrian-friendly parking lot
- ▶ Lighting on street and sidewalk
- ▶ Walkability; enhanced streetscape - safety for women
- ▶ Support Hoag and have a high-quality hospital system in Newport
- ▶ Bike lands and parking
- ▶ Better connectivity between West Newport and the Peninsula, such as better walks on Coast Highway
- ▶ Not blocking views - could do high-housing seniors with close access to hospital
- ▶ High traffic in Dover will get busier with the pool
- ▶ Please don't use coastal access for a pool
- ▶ Utility undergrounding - Newport Heights and West Cliff/Dover Drive
- ▶ Build a community pool
- ▶ Protect Upper Bay
- ▶ Parks + Recreation - Community Amenities
- ▶ Protect buffer zone - no development along the Back Bay; no community pool at lower Castaways Park
- ▶ Open space and full harbor access at lower Castaways
- ▶ Meet housing needs; consideration needs to be given to going higher



## Coyote Canyon

- ▶ Generally, like the name “Coyote Canyon”
- ▶ Shopping center to accommodate an increase in housing density
- ▶ Affordable housing?
- ▶ Better public trail connections to the Back Bay from the UCI Area
- ▶ Senior and Affordable Housing
- ▶ Housing Views - Looking north is a beautiful view
- ▶ Prioritize parks and walkable retail alongside high-density mixed-use
- ▶ Landfill closed in 1996 - no houses should go here
- ▶ High-density housing
- ▶ This area is part of the Big Canyon Watershed - there is plenty of room for additional housing
- ▶ Remember buffer zones for the environment around Buck Gully
- ▶ Golf Course plus trail connectivity
- ▶ Build a “main street” concept

